



England 4563 M0057

**An Early 19th Century Chinese Black Lacquer Tea Caddy** of  
the most intricate and minute penwork executed with a single

bristle brush, fitted internally with elaborately etched metal canisters and lids, the exterior decorated in gold landscape scenes of figures and birds with a hinged top opening to a lacquered interior fitted with two removable metal tea tins decorated with geometric patterns and each tin with two lids (each with one functional lid sitting beneath a decorative lid), and with the whole raised on four claw feet

Height: 5 1/2"; Width: 9 1/4"; Depth: 6 1/2"

---



England 4563 M0057

**A 19th Century Chinese Black Lacquered Pigskin on Wood Valuables Box** covered with a domed rectangular lid, and the whole fitted with handmade and original brass hardware handles on the sides and lockplate latch on the front

Height: 5 1/2"; Width: 9 1/4"; Depth: 6 1/2"





England 4563 M0057

**A 19th Century Anglo-Indian Ebonized Box on Stand,** the top centered by mother-of-pearl and rocaille brass inlay, framed

by a mother-of-pearl quatrefoil inlay and brass trim, continuing along the sides, with a mother-of-pearl escutcheon at the front and inner brass hinges engraved with foliate and geometric patterns, now fitted with a lined interior, and raised on a later stand with ebonized faux bamboo legs

Height: 5 1/2"; Width: 9 1/4"; Depth: 6 1/2"

---



England 4563 M0057

**A Fine 19th Century French Première-Partie Boule  
Marquetry Jewel Box**, imported, sold by and stamped Asprey  
London, with red tortoiseshell ground inlaid with brass rocaille  
veneers

Height: 5 1/2"; Width: 9 1/4"; Depth: 6 1/2"



England 4563 M0057

**A 19th Century English Regency Chinese Export Hinged Wedding Box**, lacquered in black and red with gilt motifs of flowers, butterflies, and men lounging in their temple gardens, the box standing on a conforming and later base with double faux bamboo base

Height: 5 1/2"; Width: 9 1/4"; Depth: 6 1/2"

---





England 4563 M0057

**A 19th Century Diminutive Tortoiseshell Tea Caddy**, the domed top embellished with pewter stringing and centered by a sterling silver medallion at the top above a rectangular form with a sterling silver escutcheon, and opening to reveal two lidded interior compartments with the whole all raised on silvered ball feet



 C. MARIANI ANTIQUES  
RESTORATION & CUSTOM

---

1301 Harrison Street San Francisco CA 94103  
www.cmarianiantiques.com

Contact: Claudio Mariani  
claudio@cmarianiantiques.com  
Tel 415.541.7868 ~ Fax 415.487.3950

Height: 5 1/2"; Width: 9 1/4"; Depth: 6 1/2"

---



England 4563 M0057

**An 1810 French Tortoiseshell Table Snuff Box with 18k Rose Gold Hinge and Mounts**, accented with an exquisitely hand painted miniature portraiture on porcelain of a beauty, the portrait protected by a crystal cover; the box itself is solid shell, thick and in perfect condition. This piece is pristine, with no warping, damage or restorations

Height: 5 1/2"; Width: 9 1/4"; Depth: 6 1/2"

---



England 4563 M0057

**An Early 19th Century George III Pagoda-Top Pressed Tortoiseshell Double Tea Caddy**, with architectural pressed panels and flute pressed canted corners, inlaid silver piping, escutcheon and cartouche titled, “Jane Thomas”

 C. MARIANI ANTIQUES  
RESTORATION & CUSTOM

---

1301 Harrison Street San Francisco CA 94103  
www.cmarianiantiques.com

Contact: Claudio Mariani  
claudio@cmarianiantiques.com  
Tel 415.541.7868 ~ Fax 415.487.3950

Height: 5 1/2"; Width: 9 1/4"; Depth: 6 1/2"

---







C. MARIANI ANTIQUES  
RESTORATION & CUSTOM

---

1301 Harrison Street San Francisco CA 94103  
www.cmarianiantiques.com

Contact: Claudio Mariani  
claudio@cmarianiantiques.com  
Tel 415.541.7868 ~ Fax 415.487.3950

England 4563 M0057

**A Late 18th Century Octagonal Ridged Bone Tented Top  
Tea Caddy**, with tortoiseshell stringing, silver knob finial,  
escutcheon and oval monogrammed cartouche

Height: 5 1/2"; Width: 9 1/4"; Depth: 6 1/2"

---



England 4563 M0057

**A Late 18th Century Octagonal Bone Tea Caddy, with tortoiseshell trim and silver knob handle, escutcheon and shield**

shaped cartouche, with floating lid and key

Height: 5 1/2"; Width: 9 1/4"; Depth: 6 1/2"



England 4563 M0057

**A 19th Century Palmwood Snuff Box** with tortoiseshell interior

Height: 5 1/2"; Width: 9 1/4"; Depth: 6 1/2"



England 4563 M0057

**A Late 19th Century English Lund Tortoiseshell Box** with  
fitted interior with bone trim

Height: 5 1/2"; Width: 9 1/4"; Depth: 6 1/2"

---





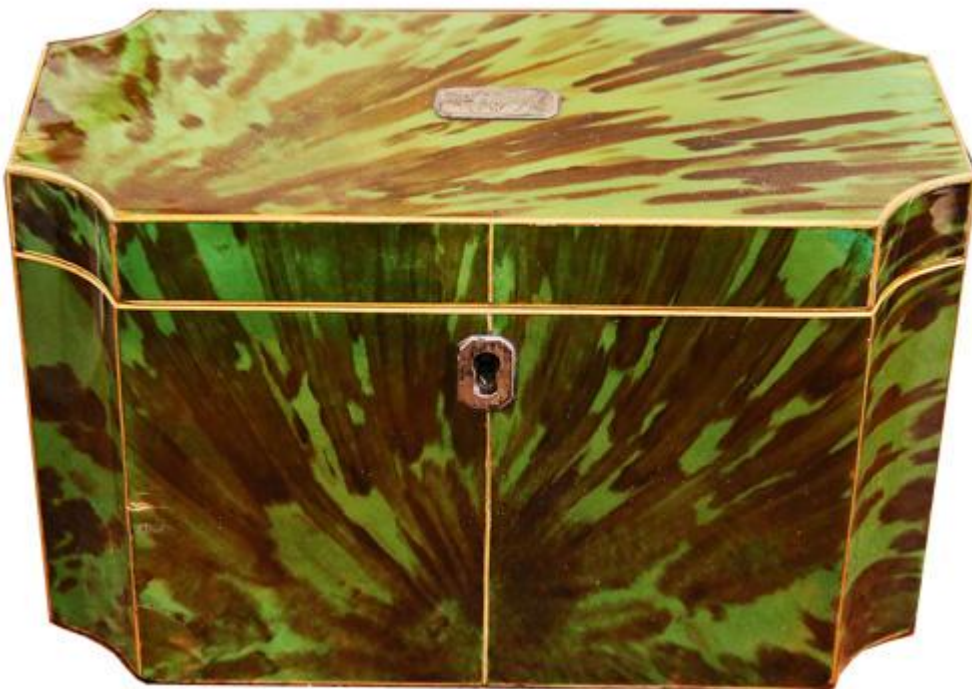
England 4563 M0057

**An Unusual Square 19th Century English Red Tortoiseshell  
Tea Caddy** with bone stringing, a sterling silver pull, and exotic

wood herringbone parquetry inlay embellishing the top and sides

Height: 5 1/2"; Width: 9 1/4"; Depth: 6 1/2"

---



England 4563 M0057

**An 18th Century English Green Tortoiseshell Double Tea**



C. MARIANI ANTIQUES  
RESTORATION & CUSTOM

---

1301 Harrison Street San Francisco CA 94103  
www.cmarianiantiques.com

Contact: Claudio Mariani  
claudio@cmarianiantiques.com  
Tel 415.541.7868 ~ Fax 415.487.3950

**Caddy** with cut corners and inlaid fruitwood piping, silver escutcheon and monogrammed cartouche and matching interior lids

Height: 5 1/2"; Width: 9 1/4"; Depth: 6 1/2"

---



 C. MARIANI ANTIQUES  
RESTORATION & CUSTOM

1301 Harrison Street San Francisco CA 94103  
www.cmarianiantiques.com

Contact: Claudio Mariani  
claudio@cmarianiantiques.com  
Tel 415.541.7868 ~ Fax 415.487.3950





England 4563 M0057

**An Early 19th Century Continental Ebony and Bone-Inlaid Red Tortoiseshell Tea Caddy**, of rectangular form with geometric mosaic bone inlay on the sides and top, the top centered with a sterling silver pull and accented with a sterling cartouche engraved "Green," with matching interior lid

Height: 5 1/2"; Width: 9 1/4"; Depth: 6 1/2"

---



England 4563 M0057

**Early 19th Century Chinese Black Lacquer Tea Caddy,**  
rectangular in shape with paneled sides and decorated in gold  
and red enameling

Height: 5 1/2"; Width: 9 1/4"; Depth: 6 1/2"



England 4563 M0057

**A Late 18th-Early 19th Century English Bone-Inlaid  
Tortoiseshell Tea Caddy** octagonal in shape with silver finial,  
escutcheon and pique framed oval cartouche



 C. MARIANI ANTIQUES  
RESTORATION & CUSTOM

---

1301 Harrison Street San Francisco CA 94103  
www.cmarianiantiques.com

Contact: Claudio Mariani  
claudio@cmarianiantiques.com  
Tel 415.541.7868 ~ Fax 415.487.3950

Height: 5 1/2"; Width: 9 1/4"; Depth: 6 1/2"

---



England 4563 M0057



## **A 19th Century English Anglo-Indian Bone Miniature Desk**

the slant front over a single drawer with original fitted interior

Height: 5 1/2"; Width: 9 1/4"; Depth: 6 1/2"

---



England 4563 M0057

**A Pair of 18th Century Italian Walnut Bible Boxes**, each with an unusually low profile, carved with a relating diamond pattern and raised on stylized animal paw feet

Height: 5 1/2"; Width: 9 1/4"; Depth: 6 1/2"

---



# C. MARIANI ANTIQUES RESTORATION & CUSTOM

1301 Harrison Street San Francisco CA 94103  
www.cmarianiantiques.com

Contact: Claudio Mariani  
claudio@cmarianiantiques.com  
Tel 415.541.7868 ~ Fax 415.487.3950





C. MARIANI ANTIQUES  
RESTORATION & CUSTOM

---

1301 Harrison Street San Francisco CA 94103  
www.cmarianiantiques.com

Contact: Claudio Mariani  
claudio@cmarianiantiques.com  
Tel 415.541.7868 ~ Fax 415.487.3950

England 4563 M0057

**An 18th Century Italian Polychrome and Parcel-Gilt  
Tabernacle Box**, crested with a neoclassical pediment, raised on  
flattened bun feet, embellished with faux marble, intricate  
stellate carvings and retaining its original key and lock with the  
door opening to reveal a storage/display area

Height: 5 1/2"; Width: 9 1/4"; Depth: 6 1/2"

---





England 4563 M0057

**A 19th Century French Boullework Key Box**, the ebonized and brass case centered by an inlaid brass red tortoiseshell and

brass door, a keyed lock, the reverse fitted with wall mounts for hanging and the interior fitted with hooks for sets of keys

Height: 5 1/2"; Width: 9 1/4"; Depth: 6 1/2"

---



England 4563 M0057



C. MARIANI ANTIQUES  
RESTORATION & CUSTOM

---

1301 Harrison Street San Francisco CA 94103  
www.cmarianiantiques.com

Contact: Claudio Mariani  
claudio@cmarianiantiques.com  
Tel 415.541.7868 ~ Fax 415.487.3950

**A Massive 16th Century Tuscan Oak Bible Box**, perfect for modern storage needs, with a guilloché motif encircling the box and the whole raised on prototypical Baroque lions' paw feet. Provenance: from the 19th c. Arezzo gallery of Pietro Bruschi, stamped on the interior lid, later (1920) amongst the household furnishings of Castiglioni Fibbochi, and most likely a late 20th c. deaccessioned piece from Casa Museo Ivan Bruschi

Height: 5 1/2"; Width: 9 1/4"; Depth: 6 1/2"

---





# C. MARIANI ANTIQUES RESTORATION & CUSTOM

1301 Harrison Street San Francisco CA 94103  
www.cmarianiantiques.com

Contact: Claudio Mariani  
claudio@cmarianiantiques.com  
Tel 415.541.7868 ~ Fax 415.487.3950







C. MARIANI ANTIQUES  
RESTORATION & CUSTOM

---

1301 Harrison Street San Francisco CA 94103  
www.cmarianiantiques.com

Contact: Claudio Mariani  
claudio@cmarianiantiques.com  
Tel 415.541.7868 ~ Fax 415.487.3950

England 4563 M0057

**A Rare and Unusually Large 18th Century Deep Green Tortoiseshell English Tea Caddy**, raised on silvered ball feet and accented with pewter stringing and silvered bale handle and escutcheon, with two interior matching compartments retaining some of the original lead lining, one for green tea and one for black

Height: 5 1/2"; Width: 9 1/4"; Depth: 6 1/2"

---



England 4563 M0057

**A 19th Century English Tortoiseshell Tea Caddy**, with flared skirt and pagoda lid, embellished with pewter stringing and bone, sterling escutcheon and plaque, and raised on flattened bun feet

 C. MARIANI ANTIQUES  
RESTORATION & CUSTOM

---

1301 Harrison Street San Francisco CA 94103  
www.cmarianiantiques.com

Contact: Claudio Mariani  
claudio@cmarianiantiques.com  
Tel 415.541.7868 ~ Fax 415.487.3950

Height: 5 1/2"; Width: 9 1/4"; Depth: 6 1/2"

---





C. MARIANI ANTIQUES  
RESTORATION & CUSTOM

---

1301 Harrison Street San Francisco CA 94103  
www.cmarianiantiques.com

Contact: Claudio Mariani  
claudio@cmarianiantiques.com  
Tel 415.541.7868 ~ Fax 415.487.3950

England 4563 M0057

**A 19th Century Tortoiseshell Tea Caddy** with flared skirt a pagoda lid with original lock and key, raised on bone flattened bun feet.

Height: 5 1/2"; Width: 9 1/4"; Depth: 6 1/2"

---





England 4563 M0057

**An Unusually Shaped 19th Century English Regency  
Tortoiseshell Tea Caddy** with bone accents, the whole raised  
on silvered ball feet

Height: 5 1/2"; Width: 9 1/4"; Depth: 6 1/2"



England 4563 M0057

**A 19th Century Tortoiseshell Tea Caddy** with a pagoda lid decorated with an inlay of mother-of-pearl in a floral pattern,



C. MARIANI ANTIQUES  
RESTORATION & CUSTOM

---

1301 Harrison Street San Francisco CA 94103  
www.cmarianiantiques.com

Contact: Claudio Mariani  
claudio@cmarianiantiques.com  
Tel 415.541.7868 ~ Fax 415.487.3950

raised on silver ball feet

Height: 5 1/2"; Width: 9 1/4"; Depth: 6 1/2"

---

 C. MARIANI ANTIQUES  
RESTORATION & CUSTOM

1301 Harrison Street San Francisco CA 94103  
www.cmarianiantiques.com

Contact: Claudio Mariani  
claudio@cmarianiantiques.com  
Tel 415.541.7868 ~ Fax 415.487.3950



England 4563 M0057



**A 19th Century English Rosewood Valuables and Jewelry Travel Box**, inlaid with mother-of-pearl floral and bird motifs and pewter stringing, and intricately carved, the whole opening to reveal drawers and panels embellished with gold embossed leather, silk compartments, multiple drawers and even a pullout writing surface

Height: 5 1/2"; Width: 9 1/4"; Depth: 6 1/2"



England 4563 M0057

**A 19th Century Italian Jewelry Box** with parquetry designs of artist's brushes, palette and easel on the front, with 8 interior

drawers

Height: 5 1/2"; Width: 9 1/4"; Depth: 6 1/2"

---



England 4563 M0057

**A Mid 19th Century French Boullework Box** with red tortoiseshell and fretted brass and in exceptional condition



Height: 5 1/2"; Width: 9 1/4"; Depth: 6 1/2"

---



England 4563 M0057

**A Magnificent 18th Century Italian Ebony and Bone Cave à Liqueur**, inlaid with elaborate imagery of grapes, ewers,





# C. MARIANI ANTIQUES RESTORATION & CUSTOM

---

1301 Harrison Street San Francisco CA 94103  
www.cmarianiantiques.com

Contact: Claudio Mariani  
claudio@cmarianiantiques.com  
Tel 415.541.7868 ~ Fax 415.487.3950

glassware, animals, flowers and butterflies all set amidst scrolling rocaille, the cabinet opening to reveal ten pristine liqueur glasses and three stoppered decanters, all superbly etched with floral and grapevine motifs

Height: 5 1/2"; Width: 9 1/4"; Depth: 6 1/2"

---



England 4563 M0057

**A 19th Century Cut Crystal Parfum Box**, with gilt brass detailing and retaining its original six parfum bottles with the



C. MARIANI ANTIQUES  
RESTORATION & CUSTOM

---

1301 Harrison Street San Francisco CA 94103  
www.cmarianiantiques.com

Contact: Claudio Mariani  
claudio@cmarianiantiques.com  
Tel 415.541.7868 ~ Fax 415.487.3950

whole raised on lobed feet

Height: 5 1/2"; Width: 9 1/4"; Depth: 6 1/2"