

 C. MARIANI ANTIQUES
RESTORATION & CUSTOM

1301 Harrison Street San Francisco CA 94103
www.cmarianiantiques.com

Contact: Claudio Mariani
claudio@cmarianiantiques.com
Tel 415.541.7868 ~ Fax 415.487.3950





C. MARIANI ANTIQUES
RESTORATION & CUSTOM

1301 Harrison Street San Francisco CA 94103
www.cmarianiantiques.com

Contact: Claudio Mariani
claudio@cmarianiantiques.com
Tel 415.541.7868 ~ Fax 415.487.3950

France 4922 M0058

A 19th Century French diminutive Rosewood six drawers sampler chest.

Height 17 1/2"; Width 12"; Depth 7 1/4"



France 4922 M0058

A 19th Century English Tortoiseshell Tea Caddy in a Rare



C. MARIANI ANTIQUES
RESTORATION & CUSTOM

1301 Harrison Street San Francisco CA 94103
www.cmarianiantiques.com

Contact: Claudio Mariani
claudio@cmarianiantiques.com
Tel 415.541.7868 ~ Fax 415.487.3950

Form, the pagoda top above a serpentine form with a lidded interior raised on wooden ball feet, the whole with bone and silver detailing

Height 17 1/2"; Width 12"; Depth 7 1/4"



France 4922 M0058

A 19th Century Valuables Box with parquetry inlaid bands of satinwood and ebonized boxwood



C. MARIANI ANTIQUES
RESTORATION & CUSTOM

1301 Harrison Street San Francisco CA 94103
www.cmarianiantiques.com

Contact: Claudio Mariani
claudio@cmarianiantiques.com
Tel 415.541.7868 ~ Fax 415.487.3950

Height 17 1/2"; Width 12"; Depth 7 1/4"



C. MARIANI ANTIQUES RESTORATION & CUSTOM

1301 Harrison Street San Francisco CA 94103
www.cmarianiantiques.com

Contact: Claudio Mariani
claudio@cmarianiantiques.com
Tel 415.541.7868 ~ Fax 415.487.3950





C. MARIANI ANTIQUES
RESTORATION & CUSTOM

1301 Harrison Street San Francisco CA 94103
www.cmarianiantiques.com

Contact: Claudio Mariani
claudio@cmarianiantiques.com
Tel 415.541.7868 ~ Fax 415.487.3950

France 4922 M0058

A Diminutive 19th Century English Cabinetmaker's Sample Mahogany Chest with an inlaid top above three drawers and the whole raised on bracket feet

Height 17 1/2"; Width 12"; Depth 7 1/4"



France 4922 M0058

A 19th Century English Blonde Tortoiseshell Tea Caddy, the top centered by a sterling silver rectangular medallion, the whole embellished with pewter stringing, and opening to reveal a sugar bowl between two lidded compartments, one for green tea and one for black, the whole raised on bun feet

Height 17 1/2"; Width 12"; Depth 7 1/4"



France 4922 M0058

A 19th Century Japanese Tortoiseshell Box, the top featuring

a gold polychromed crane (a symbol of luck, happiness and longevity) flying over paddy fields, the whole accented with gold foliate motifs, the top opening to reveal four tortoiseshell boxes, each decorated with motifs representing a different type of tea or herb

Height 17 1/2"; Width 12"; Depth 7 1/4"



France 4922 M0058

A 19th Century English Tortoiseshell Jewel Box, accented with etched silver mountings and two lion heads and metal rings on either side, the domed top with an engraved silver cartouche, and the whole raised on stylized animal paw feet

Height 17 1/2"; Width 12"; Depth 7 1/4"



France 4922 M0058

A 19th Century English Blonde Tortoiseshell Box, the top centered



C. MARIANI ANTIQUES RESTORATION & CUSTOM

1301 Harrison Street San Francisco CA 94103
www.cmarianiantiques.com

Contact: Claudio Mariani
claudio@cmarianiantiques.com
Tel 415.541.7868 ~ Fax 415.487.3950

by a sterling silver rectangular engraved medallion, the whole embellished with pewter stringing to create a patchwork quilt on the top, opening to a velvet lined interior, and raised on silvered bun feet

Height 17 1/2"; Width 12"; Depth 7 1/4"



France 4922 M0058

A 19th Century English Blonde Tortoiseshell Box, the top centered by a sterling silver rectangular medallion, crisscrossed with pewter stringing, and opening to a royal purple velvet lined interior, the whole raised on silvered lion paw feet

 C. MARIANI ANTIQUES
RESTORATION & CUSTOM

1301 Harrison Street San Francisco CA 94103
www.cmarianiantiques.com

Contact: Claudio Mariani
claudio@cmarianiantiques.com
Tel 415.541.7868 ~ Fax 415.487.3950

Height 17 1/2"; Width 12"; Depth 7 1/4"



France 4922 M0058



C. MARIANI ANTIQUES
RESTORATION & CUSTOM

1301 Harrison Street San Francisco CA 94103
www.cmarianiantiques.com

Contact: Claudio Mariani
claudio@cmarianiantiques.com
Tel 415.541.7868 ~ Fax 415.487.3950

A 19th Century English Regency Blonde Tortoiseshell Box,
the gently sloping top embellished with pewter stringing and
centered by a sterling silver rectangular medallion, the top
opening to reveal a striking red lined interior and a removable
tray with fitted and lined compartments, with the whole raised on
rocaille brass feet; original key is included

Height 17 1/2"; Width 12"; Depth 7 1/4"



France 4922 M0058

A Rare French 19th Century Pink Enamel Marquetry Boullework Ebonized Box, the top and two-door front opening to reveal two removable compartments and the lock engraved “Tahan Fr. cant Rue de la Paix 30”. The Tahan Company was



C. MARIANI ANTIQUES RESTORATION & CUSTOM

1301 Harrison Street San Francisco CA 94103
www.cmarianiantiques.com

Contact: Claudio Mariani
claudio@cmarianiantiques.com
Tel 415.541.7868 ~ Fax 415.487.3950

founded by Pierre Lambert Tahan, a cabinet and object maker of the 19th century, appointed by Napoleon III, Tahan's son Jean Pierre Alexandre opened the Tahan store at 32 Rue de la Paix in Paris, known as "Supplier of the King and Princes" and later "Supplier of the Emperor"; original key is included

Height 17 1/2"; Width 12"; Depth 7 1/4"



France 4922 M0058

**A Rare 19th Century French Powder Blue Enamel
Marquetry Boullework and Ebonized Box, the Boullework top**



C. MARIANI ANTIQUES RESTORATION & CUSTOM

1301 Harrison Street San Francisco CA 94103
www.cmarianiantiques.com

Contact: Claudio Mariani
claudio@cmarianiantiques.com
Tel 415.541.7868 ~ Fax 415.487.3950

and two-door front opening to reveal a lined and fitted interior with one removable compartment, the whole accented with ormolu appliqués and resting on bun feet; original key is included
Height 17 1/2"; Width 12"; Depth 7 1/4"



France 4922 M0058

An Early 19th Century Chinese Black Lacquer Tea Caddy of the most intricate and minute penwork executed with a single



C. MARIANI ANTIQUES RESTORATION & CUSTOM

1301 Harrison Street San Francisco CA 94103
www.cmarianiantiques.com

Contact: Claudio Mariani
claudio@cmarianiantiques.com
Tel 415.541.7868 ~ Fax 415.487.3950

bristle brush, fitted internally with elaborately etched metal canisters and lids, the exterior decorated in gold landscape scenes of figures and birds with a hinged top opening to a lacquered interior fitted with two removable metal tea tins decorated with geometric patterns and each tin with two lids (each with one functional lid sitting beneath a decorative lid), and with the whole raised on four claw feet

Height 17 1/2"; Width 12"; Depth 7 1/4"



France 4922 M0058

A 19th Century Chinese Black Lacquered Pigskin on Wood Valuables Box covered with a domed rectangular lid, and the whole fitted with handmade and original brass hardware handles on the sides and lockplate latch on the front

Height 17 1/2"; Width 12"; Depth 7 1/4"



France 4922 M0058

A 19th Century Anglo-Indian Ebonized Box on Stand, the top centered by mother-of-pearl and rocaille brass inlay, framed

by a mother-of-pearl quatrefoil inlay and brass trim, continuing along the sides, with a mother-of-pearl escutcheon at the front and inner brass hinges engraved with foliate and geometric patterns, now fitted with a lined interior, and raised on a later stand with ebonized faux bamboo legs

Height 17 1/2"; Width 12"; Depth 7 1/4"



France 4922 M0058

**A Fine 19th Century French Première-Partie Boule
Marquetry Jewel Box**, imported, sold by and stamped Asprey
London, with red tortoiseshell ground inlaid with brass rocaille
veneers

Height 17 1/2"; Width 12"; Depth 7 1/4"



France 4922 M0058

A 19th Century Diminutive Tortoiseshell Tea Caddy, the domed top embellished with pewter stringing and centered by a sterling silver medallion at the top above a rectangular form with a sterling escutcheon, and opening to reveal two lidded interior compartments with the whole all raised on silvered ball feet

Height 17 1/2"; Width 12"; Depth 7 1/4"



France 4922 M0058

**An 1810 French Tortoiseshell Table Snuff Box with 18k
Rose Gold Hinge and Mounts, accented with an exquisitely**



C. MARIANI ANTIQUES RESTORATION & CUSTOM

1301 Harrison Street San Francisco CA 94103
www.cmarianiantiques.com

Contact: Claudio Mariani
claudio@cmarianiantiques.com
Tel 415.541.7868 ~ Fax 415.487.3950

hand painted miniature portraiture on porcelain of a beauty, the portrait protected by a crystal cover; the box itself is solid shell, thick and in perfect condition. This piece is pristine, with no warping, damage or restorations

Height 17 1/2"; Width 12"; Depth 7 1/4"



France 4922 M0058

An Early 19th Century George III Pagoda-Top Pressed Tortoiseshell Double Tea Caddy, with architectural pressed panels and flute pressed canted corners, inlaid silver piping, escutcheon and cartouche titled, “Jane Thomas”

 C. MARIANI ANTIQUES
RESTORATION & CUSTOM

1301 Harrison Street San Francisco CA 94103
www.cmarianiantiques.com

Contact: Claudio Mariani
claudio@cmarianiantiques.com
Tel 415.541.7868 ~ Fax 415.487.3950

Height 17 1/2"; Width 12"; Depth 7 1/4"





C. MARIANI ANTIQUES
RESTORATION & CUSTOM

1301 Harrison Street San Francisco CA 94103
www.cmarianiantiques.com

Contact: Claudio Mariani
claudio@cmarianiantiques.com
Tel 415.541.7868 ~ Fax 415.487.3950

France 4922 M0058

**A Late 18th Century Octagonal Ridged Bone Tented Top
Tea Caddy**, with tortoiseshell stringing, silver knob finial,
escutcheon and oval monogrammed cartouche

Height 17 1/2"; Width 12"; Depth 7 1/4"



France 4922 M0058

A Late 18th Century Octagonal Bone Tea Caddy, with tortoiseshell trim and silver knob handle, escutcheon and shield

shaped cartouche, with floating lid and key

Height 17 1/2"; Width 12"; Depth 7 1/4"



France 4922 M0058

A 19th Century Palmwood Snuff Box with tortoiseshell interior

Height 17 1/2"; Width 12"; Depth 7 1/4"



France 4922 M0058

A Late 19th Century English Lund Tortoiseshell Box with
fitted interior with bone trim

Height 17 1/2"; Width 12"; Depth 7 1/4"

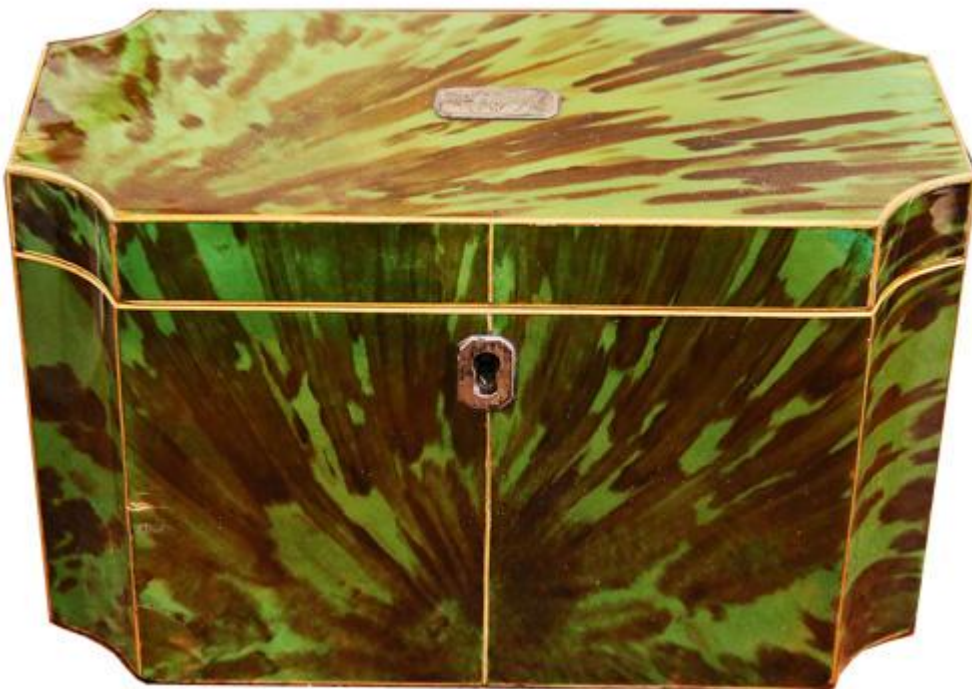


France 4922 M0058

An Unusual Square 19th Century English Red Tortoiseshell Tea Caddy with bone stringing, a sterling silver pull, and exotic

wood herringbone parquetry inlay embellishing the top and sides

Height 17 1/2"; Width 12"; Depth 7 1/4"



France 4922 M0058

An 18th Century English Green Tortoiseshell Double Tea



C. MARIANI ANTIQUES
RESTORATION & CUSTOM

1301 Harrison Street San Francisco CA 94103
www.cmarianiantiques.com

Contact: Claudio Mariani
claudio@cmarianiantiques.com
Tel 415.541.7868 ~ Fax 415.487.3950

Caddy with cut corners and inlaid fruitwood piping, silver escutcheon and monogrammed cartouche and matching interior lids

Height 17 1/2"; Width 12"; Depth 7 1/4"



C. MARIANI ANTIQUES RESTORATION & CUSTOM

1301 Harrison Street San Francisco CA 94103
www.cmarianiantiques.com

Contact: Claudio Mariani
claudio@cmarianiantiques.com
Tel 415.541.7868 ~ Fax 415.487.3950



France 4922 M0058

An Early 19th Century Continental Ebony and Bone-Inlaid Red Tortoiseshell Tea Caddy, of rectangular form with geometric mosaic bone inlay on the sides and top, the top centered with a sterling silver pull and accented with a sterling cartouche engraved "Green," with matching interior lid

Height 17 1/2"; Width 12"; Depth 7 1/4"



France 4922 M0058

Early 19th Century Chinese Black Lacquer Tea Caddy,
rectangular in shape with paneled sides and decorated in gold
and red enameling

Height 17 1/2"; Width 12"; Depth 7 1/4"



France 4922 M0058

A Late 18th-Early 19th Century English Bone-Inlaid Tortoiseshell Tea Caddy octagonal in shape with silver finial, escutcheon and pique framed oval cartouche

Height 17 1/2"; Width 12"; Depth 7 1/4"



France 4922 M0058

A Pair of 18th Century Italian Walnut Bible Boxes, each



C. MARIANI ANTIQUES
RESTORATION & CUSTOM

1301 Harrison Street San Francisco CA 94103
www.cmarianiantiques.com

Contact: Claudio Mariani
claudio@cmarianiantiques.com
Tel 415.541.7868 ~ Fax 415.487.3950

with an unusually low profile, carved with a relating diamond pattern and raised on stylized animal paw feet

Height 17 1/2"; Width 12"; Depth 7 1/4"



C. MARIANI ANTIQUES RESTORATION & CUSTOM

1301 Harrison Street San Francisco CA 94103
www.cmarianiantiques.com

Contact: Claudio Mariani
claudio@cmarianiantiques.com
Tel 415.541.7868 ~ Fax 415.487.3950





C. MARIANI ANTIQUES
RESTORATION & CUSTOM

1301 Harrison Street San Francisco CA 94103
www.cmarianiantiques.com

Contact: Claudio Mariani
claudio@cmarianiantiques.com
Tel 415.541.7868 ~ Fax 415.487.3950

France 4922 M0058

**An 18th Century Italian Polychrome and Parcel-Gilt
Tabernacle Box**, crested with a neoclassical pediment, raised on
flattened bun feet, embellished with faux marble, intricate
stellate carvings and retaining its original key and lock with the
door opening to reveal a storage/display area

Height 17 1/2"; Width 12"; Depth 7 1/4"



France 4922 M0058

A 19th Century French Boullework Key Box, the ebonized and brass case centered by an inlaid brass red tortoiseshell and

brass door, a keyed lock, the reverse fitted with wall mounts for hanging and the interior fitted with hooks for sets of keys

Height 17 1/2"; Width 12"; Depth 7 1/4"



France 4922 M0058

A Massive 16th Century Tuscan Oak Bible Box, perfect for modern storage needs, with a guilloché motif encircling the box and the whole raised on prototypical Baroque lions' paw feet. Provenance: from the 19th c. Arezzo gallery of Pietro Bruschi, stamped on the interior lid, later (1920) amongst the household furnishings of Castiglioni Fibbochi, and most likely a late 20th c. deaccessioned piece from Casa Museo Ivan Bruschi

Height 17 1/2"; Width 12"; Depth 7 1/4"