



# C. MARIANI ANTIQUES RESTORATION & CUSTOM

1301 Harrison Street San Francisco CA 94103  
www.cmarianiantiques.com

Contact: Claudio Mariani  
claudio@cmarianiantiques.com  
Tel 415.541.7868 ~ Fax 415.487.3950





C. MARIANI ANTIQUES  
RESTORATION & CUSTOM

---

1301 Harrison Street San Francisco CA 94103  
www.cmarianiantiques.com

Contact: Claudio Mariani  
claudio@cmarianiantiques.com  
Tel 415.541.7868 ~ Fax 415.487.3950

England 4043 M00525

**A Rare and Unusually Large 18th Century Deep Green Tortoiseshell English Tea Caddy**, raised on silvered ball feet and accented with pewter stringing and silvered bale handle and escutcheon, with two interior matching compartments retaining some of the original lead lining, one for green tea and one for black

Height: 7"; Width: 8"; Depth: 5"

---



England 4043 M00525

**A 19th Century English Tortoiseshell Tea Caddy**, with flared skirt and pagoda lid, embellished with pewter stringing and bone, sterling escutcheon and plaque, and raised on flattened bun feet

 C. MARIANI ANTIQUES  
RESTORATION & CUSTOM

---

1301 Harrison Street San Francisco CA 94103  
www.cmarianiantiques.com

Contact: Claudio Mariani  
claudio@cmarianiantiques.com  
Tel 415.541.7868 ~ Fax 415.487.3950

Height: 7"; Width: 8"; Depth: 5"

---



England 4043 M00525

**A 19th Century Tortoiseshell Tea Caddy** with flared skirt a pagoda lid with original lock and key, raised on bone flattened bun feet.

Height: 7"; Width: 8"; Depth: 5"

---



England 4043 M00525

**An Unusually Shaped 19th Century English Regency  
Tortoiseshell Tea Caddy** with bone accents, the whole raised  
on silvered ball feet

Height: 7"; Width: 8"; Depth: 5"



England 4043 M00525

**A 19th Century Tortoiseshell Tea Caddy** with a pagoda lid decorated with an inlay of mother-of-pearl in a floral pattern,

 C. MARIANI ANTIQUES  
RESTORATION & CUSTOM

---

1301 Harrison Street San Francisco CA 94103  
www.cmarianiantiques.com

Contact: Claudio Mariani  
claudio@cmarianiantiques.com  
Tel 415.541.7868 ~ Fax 415.487.3950

raised on silver ball feet

Height: 7"; Width: 8"; Depth: 5"

---







C. MARIANI ANTIQUES  
RESTORATION & CUSTOM

---

1301 Harrison Street San Francisco CA 94103  
www.cmarianiantiques.com

Contact: Claudio Mariani  
claudio@cmarianiantiques.com  
Tel 415.541.7868 ~ Fax 415.487.3950

England 4043 M00525

**A 19th Century Italian Jewelry Box** with parquetry designs of artist's brushes, palette and easel on the front, with 8 interior drawers

Height: 7"; Width: 8"; Depth: 5"

---

 C. MARIANI ANTIQUES  
RESTORATION & CUSTOM

1301 Harrison Street San Francisco CA 94103  
www.cmarianiantiques.com

Contact: Claudio Mariani  
claudio@cmarianiantiques.com  
Tel 415.541.7868 ~ Fax 415.487.3950



England 4043 M00525

**A 19th Century English Rosewood Valuables and Jewelry Travel Box**, inlaid with mother-of-pearl floral and bird motifs and pewter stringing, and intricately carved, the whole opening to reveal drawers and panels embellished with gold embossed leather, silk compartments, multiple drawers and even a pullout writing surface

Height: 7"; Width: 8"; Depth: 5"



England 4043 M00525

**A Mid 19th Century French Boullework Box** with red tortoiseshell and fretted brass and in exceptional condition

Height: 7"; Width: 8"; Depth: 5"





C. MARIANI ANTIQUES  
RESTORATION & CUSTOM

---

1301 Harrison Street San Francisco CA 94103  
www.cmarianiantiques.com

Contact: Claudio Mariani  
claudio@cmarianiantiques.com  
Tel 415.541.7868 ~ Fax 415.487.3950

England 4043 M00525

**A Magnificent 18th Century Italian Ebony and Bone Cave à Liqueur**, inlaid with elaborate imagery of grapes, ewers, glassware, animals, flowers and butterflies all set amidst scrolling rocaille, the cabinet opening to reveal ten pristine liqueur glasses and three stoppered decanters, all superbly etched with floral and grapevine motifs

Height: 7"; Width: 8"; Depth: 5"

---



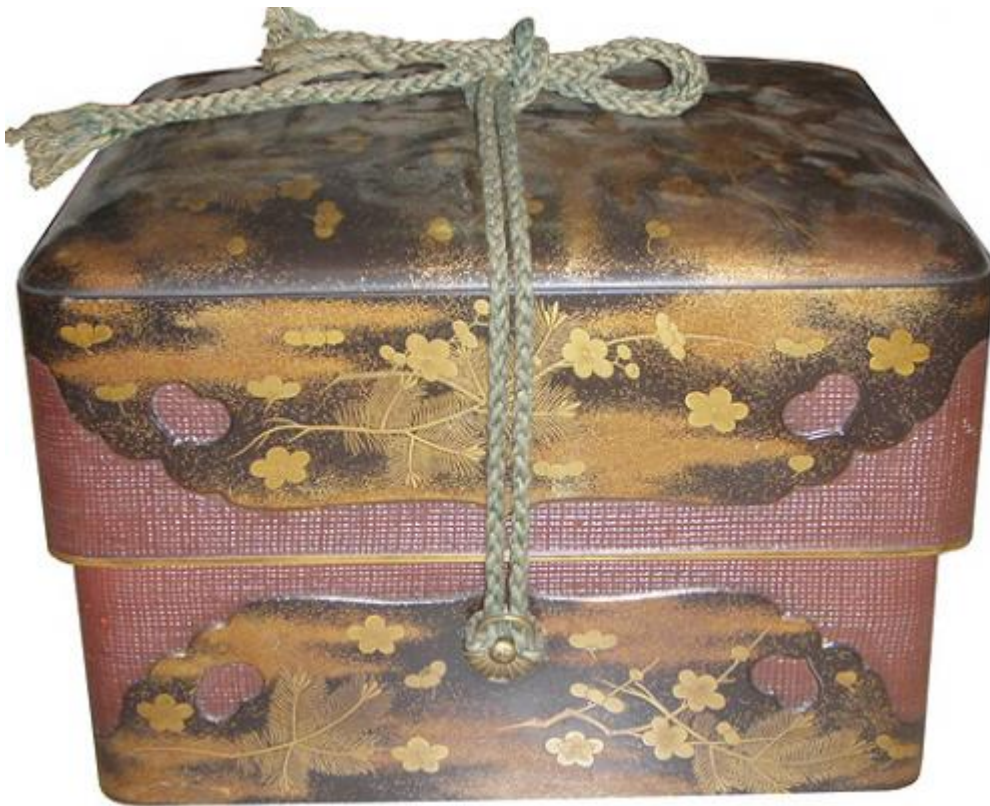
England 4043 M00525

**A 19th Century Cut Crystal Parfum Box**, with gilt brass detailing and retaining its original six parfum bottles with the

whole raised on lobed feet

Height: 7"; Width: 8"; Depth: 5"

---

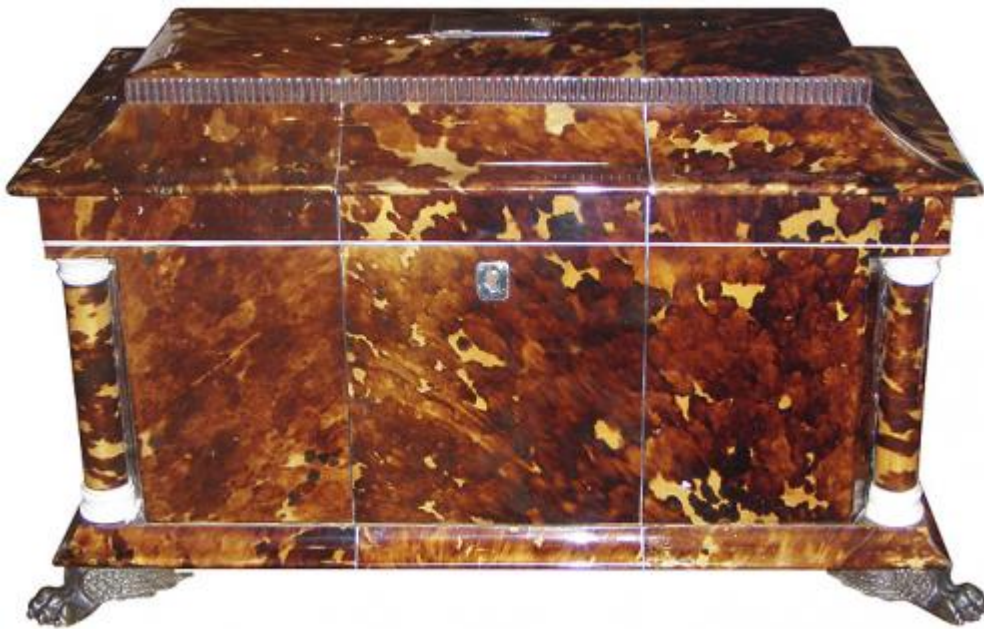


England 4043 M00525

**A 19th Century Two Tiered Japanese Jubako Boxes**  
decorated in black, gold and red lacquered images of various  
motifs, including cherry blossoms and pine needles

Height: 7"; Width: 8"; Depth: 5"

---



England 4043 M00525





C. MARIANI ANTIQUES  
RESTORATION & CUSTOM

---

1301 Harrison Street San Francisco CA 94103  
www.cmarianiantiques.com

Contact: Claudio Mariani  
claudio@cmarianiantiques.com  
Tel 415.541.7868 ~ Fax 415.487.3950

**An Unusually Large and Rare English Regency  
Tortoiseshell Tea Caddy**, in the Neoclassical taste, the pagoda  
cover above a rectangular form, fitted with two compartments,  
the whole raised on brass lion's paw feet

Height: 7"; Width: 8"; Depth: 5"

---



England 4043 M00525

**A Early 19th Century Solid Bone Valuables Box, with intricately carved floral and foliate motifs**

 C. MARIANI ANTIQUES  
RESTORATION & CUSTOM

---

1301 Harrison Street San Francisco CA 94103  
www.cmarianiantiques.com

Contact: Claudio Mariani  
claudio@cmarianiantiques.com  
Tel 415.541.7868 ~ Fax 415.487.3950

Height: 7"; Width: 8"; Depth: 5"

---



England 4043 M00525

**A 19th Century Macassar Ebony Valuable Box**, retaining its original hardware and keyed lock on two doors fitted with beveled glass and opening to four drawers

Height: 7"; Width: 8"; Depth: 5"



England 4043 M00525

## Anglo Indian Bone, Ebony, and Tortoiseshell Box

Height: 7"; Width: 8"; Depth: 5"

---



England 4043 M00525

## A 19th Century Dutch Translucent Tortoiseshell and Sterling Silver

Valuables Box, the top centered by an ornate cartouche medallion with conforming mounts on the lid and sides of the scalloped box

Height: 7"; Width: 8"; Depth: 5"

---



England 4043 M00525

**A 19th Century Shaped Octagonal Chinese Export Chinoiserie Tea Caddy**, created for the French market but in the English style, with its original key and embellished with intricate penwork in varying tones of gold and polychrome depicting pavilions, tea rituals and farming, the interior fitted with two lidded tin compartments, one for green tea and one for black, and the whole raised on dragon feet

Height: 7"; Width: 8"; Depth: 5"

---



England 4043 M00525

**An Elegant 19th Century English Burl Wood Travel Box,** fully outfitted with a complete set of sterling silver and glass jars, boxes, scissors, perfume/cream bottles, mother-of-pearl sewing items, and two interior drawers, one with a leather writing surface and the other for storage, a mirror inside the lid, and the whole accented with gold-plated brass banderole and heraldry inlay as



well as the original lock and key

Height: 7"; Width: 8"; Depth: 5"

---



England 4043 M00525

**A 19th Century English Walnut and Satinwood Marquetry Sewing Box**, with original lock and key, embellished with neoclassical scenes of Roman gods and goddesses on chariot, the

interior fitted with compartments and pin cushion

Height: 7"; Width: 8"; Depth: 5"

---



England 4043 M00525

**An Unusually Diminutive Tortoiseshell and Sterling Silver**



C. MARIANI ANTIQUES  
RESTORATION & CUSTOM

---

1301 Harrison Street San Francisco CA 94103  
www.cmarianiantiques.com

Contact: Claudio Mariani  
claudio@cmarianiantiques.com  
Tel 415.541.7868 ~ Fax 415.487.3950

**Table Box** accented with a silver eagle motif on the top along with garlanded banding and an elaborate conforming silver escutcheon, the top opening to reveal a small silver locket for a memento or small treasured item, and with all raised on flattened bun feet

Height: 7"; Width: 8"; Depth: 5"

---



England 4043 M00525

**A Whimsical English Bulldog Rosewood Box** seamed at the center and accented with glass eyes

 C. MARIANI ANTIQUES  
RESTORATION & CUSTOM

---

1301 Harrison Street San Francisco CA 94103  
www.cmarianiantiques.com

Contact: Claudio Mariani  
claudio@cmarianiantiques.com  
Tel 415.541.7868 ~ Fax 415.487.3950

Height: 7"; Width: 8"; Depth: 5"

---





C. MARIANI ANTIQUES  
RESTORATION & CUSTOM

---

1301 Harrison Street San Francisco CA 94103  
www.cmarianiantiques.com

Contact: Claudio Mariani  
claudio@cmarianiantiques.com  
Tel 415.541.7868 ~ Fax 415.487.3950

England 4043 M00525

**A Whimsical 19th Century English Coconut Caddy, with  
some restorations**

Height: 7"; Width: 8"; Depth: 5"

---



England 4043 M00525

**A 19th Century English Tortoiseshell Tea Caddy** with pagoda lid, silver escutcheon, pewter stringing and bone accents, all raised on flattened bun feet

Height: 7"; Width: 8"; Depth: 5"



England 4043 M00525

**A 19th Century English Polychromed Bull Dog Inkwell, with**



glass eyes and carved bone teeth

Height: 7"; Width: 8"; Depth: 5"

---



England 4043 M00525

**A Rare 18th Century Bone and Tortoiseshell Tea Caddy,**  
the rectangular form with canted corners, accented with copper  
lid pull and escutcheon and fitted with two elevated and  
removable interior compartments with sliding lids

Height: 7"; Width: 8"; Depth: 5"



England 4043 M00525

**An English Regency Tortoiseshell Tea Caddy**, in a rectangular and serpentine form, accented with silver and bone banding, the interior fitted with two lidded compartments, all raised on flattened bun feet

Height: 7"; Width: 8"; Depth: 5"

---



England 4043 M00525

**An Exquisite 19th Century English Tea Caddy** in the rectangular form with pagoda lid, fitted with two intricately lidded interior compartments, all accented with silver banding and raised on brass ball feet.

Height: 7"; Width: 8"; Depth: 5"



England 4043 M00525

**A 19th Century Tortoiseshell Jewelry Box** in the rectangular form with gracefully curving corners and detailed with silver stringing and silver accents.

Height: 7"; Width: 8"; Depth: 5"

---



England 4043 M00525

**A 19th Century Regency Tortoiseshell Tea Caddy** with a pagoda lid, opening to reveal two lidded compartments above a

bombé form with silver and bone accents, all above bone ball feet

Height: 7"; Width: 8"; Depth: 5"

---



England 4043 M00525



C. MARIANI ANTIQUES  
RESTORATION & CUSTOM

---

1301 Harrison Street San Francisco CA 94103  
www.cmarianiantiques.com

Contact: Claudio Mariani  
claudio@cmarianiantiques.com  
Tel 415.541.7868 ~ Fax 415.487.3950

**A Small 18th Century Rosewood Jewel Box**, the domed top embellished with a papier-mâché polychromed image of a muse surrounded by a parcel-gilt and ebonized oval cartouche and accented with ebony and satinwood crossbanding and stringing and with the whole raised on bone flattened ball feet

Height: 7"; Width: 8"; Depth: 5"

---





England 4043 M00525

**A Luxurious 19th Century English Rosewood Inkwell and Writing Set**, comprised of a letter box with domed lid, two crystal inkwells with brass tops, a concave pen rest, all above a

drawer with conforming brass handle, and with the whole raised on bun feet

Height: 7"; Width: 8"; Depth: 5"

---



England 4043 M00525



C. MARIANI ANTIQUES  
RESTORATION & CUSTOM

---

1301 Harrison Street San Francisco CA 94103  
www.cmarianiantiques.com

Contact: Claudio Mariani  
claudio@cmarianiantiques.com  
Tel 415.541.7868 ~ Fax 415.487.3950

**A Striking 19th Century Rosewood Valuables Box** with bone lozenge escutcheon, and a canted top of diapered parquetry and satinwood stringing

Height: 7"; Width: 8"; Depth: 5"