



C. MARIANI ANTIQUES  
RESTORATION & CUSTOM

1301 Harrison Street San Francisco CA 94103  
www.cmarianiantiques.com

Contact: Claudio Mariani  
claudio@cmarianiantiques.com  
Tel 415.541.7868 ~ Fax 415.487.3950



England 655 M00511

**An English Ashworth Ironstone Platter** on later faux bamboo stand

 C. MARIANI ANTIQUES  
RESTORATION & CUSTOM

---

1301 Harrison Street San Francisco CA 94103  
www.cmarianiantiques.com

Contact: Claudio Mariani  
claudio@cmarianiantiques.com  
Tel 415.541.7868 ~ Fax 415.487.3950

Height: 18 1/2"; Width: 23"; Depth: 18"

---





C. MARIANI ANTIQUES  
RESTORATION & CUSTOM

---

1301 Harrison Street San Francisco CA 94103  
www.cmarianiantiques.com

Contact: Claudio Mariani  
claudio@cmarianiantiques.com  
Tel 415.541.7868 ~ Fax 415.487.3950

England 655 M00511

**A 19th Century Chinoiserie Black Lacquer Side Table  
Stand** with red lacquer panels below

Height: 18 1/2"; Width: 23"; Depth: 18"

---



England 655 M00511

**An 18th Century French Louis XV One-Drawer Side Table**  
with cabriole legs ending in hoofed feet

Height: 18 1/2"; Width: 23"; Depth: 18"

---



England 655 M00511

**An 18th Century English Mahogany Writing Desk** with embossed black leather insert raised over carved cabriole legs ending in claw and ball feet



Height: 18 1/2"; Width: 23"; Depth: 18"

---



England 655 M00511

**An 18th Century French Louis XV Parcel-Gilt and Polychrome Wall Console** of exceptional dimensions retaining original rouge royale marble top, Signed: Lambert 1760

Height: 18 1/2"; Width: 23"; Depth: 18"



England 655 M00511

**A Pair of Exceptionally Rare Sized 19th Century Sicilian Giltwood Consoles** with Rouge Royale marble tops above a carved apron and raised on cabriole legs

Height: 18 1/2"; Width: 23"; Depth: 18"



England 655 M00511

**A Fine 18th Century English Queen Anne Walnut Lowboy**  
resting on cabriole legs



 C. MARIANI ANTIQUES  
RESTORATION & CUSTOM

---

1301 Harrison Street San Francisco CA 94103  
www.cmarianiantiques.com

Contact: Claudio Mariani  
claudio@cmarianiantiques.com  
Tel 415.541.7868 ~ Fax 415.487.3950

Height: 18 1/2"; Width: 23"; Depth: 18"

---



England 655 M00511

**An Unusual 18th Century English Mahogany Writing Desk**  
of trapezoidal shape with burgundy embossed leather top

Height: 18 1/2"; Width: 23"; Depth: 18"

---



C. MARIANI ANTIQUES  
RESTORATION & CUSTOM

1301 Harrison Street San Francisco CA 94103  
www.cmarianiantiques.com

Contact: Claudio Mariani  
claudio@cmarianiantiques.com  
Tel 415.541.7868 ~ Fax 415.487.3950



England 655 M00511

**An 18th Century Italian Louis XV Green Polychrome Side Table** with floral decorations, single drawer and raised on

cabriole legs

Height: 18 1/2"; Width: 23"; Depth: 18"

---



England 655 M00511

**An Exquisite 18th Century Continental Demilune Console**  
with green polychrome and parcel-gilt finish the top highly  
decorated with ancient scenes and Neoclassical motifs, the  
carved apron with Vitruvian scrolls of acanthus leaves, the whole  
resting on carved straight, tapered legs

Height: 18 1/2"; Width: 23"; Depth: 18"





England 655 M00511

**A Rare and Fine 18th Century Italian Giltwood Marble Top Console** with white striated dark gray marble on a triangular base with lion face on legs the whole connected by stretcher ending in lion claw and ball feet

Height: 18 1/2"; Width: 23"; Depth: 18"

---

 C. MARIANI ANTIQUES  
RESTORATION & CUSTOM

---

1301 Harrison Street San Francisco CA 94103  
www.cmarianiantiques.com

Contact: Claudio Mariani  
claudio@cmarianiantiques.com  
Tel 415.541.7868 ~ Fax 415.487.3950



England 655 M00511



C. MARIANI ANTIQUES  
RESTORATION & CUSTOM

---

1301 Harrison Street San Francisco CA 94103  
www.cmarianiantiques.com

Contact: Claudio Mariani  
claudio@cmarianiantiques.com  
Tel 415.541.7868 ~ Fax 415.487.3950

**An Early 18th Century Queen Anne Well-Patinated Oak Envelope Table**, raised on four tapering turned legs and terminating in pad feet

Height: 18 1/2"; Width: 23"; Depth: 18"

---



# C. MARIANI ANTIQUES RESTORATION & CUSTOM

1301 Harrison Street San Francisco CA 94103  
www.cmarianiantiques.com

Contact: Claudio Mariani  
claudio@cmarianiantiques.com  
Tel 415.541.7868 ~ Fax 415.487.3950





C. MARIANI ANTIQUES  
RESTORATION & CUSTOM

---

1301 Harrison Street San Francisco CA 94103  
www.cmarianiantiques.com

Contact: Claudio Mariani  
claudio@cmarianiantiques.com  
Tel 415.541.7868 ~ Fax 415.487.3950

England 655 M00511

**A Rare 18th Century Bavarian Mahogany Bow-Front  
Folding Games Table** with original Gilt-brass pulls ending on  
cabriole legs

Height: 18 1/2"; Width: 23"; Depth: 18"

---





England 655 M00511

**A Fine 19th Century English Mahogany Folding Card Table,**  
raised on a rectangular apron over fretwork detailing on a  
Marlborough leg

Height: 18 1/2"; Width: 23"; Depth: 18"



England 655 M00511

## **An 18th Century English Chippendale Mahogany**

**Dumbwaiter**, the three graduating circular shelves raised on a tripod pedestal base on castors

Height: 18 1/2"; Width: 23"; Depth: 18"

---



England 655 M00511

**An Exquisite 18th Century Mahogany Pie Crust Table**, the top anchored to the base by a bird cage mechanism ending on a tripod base with acanthus leaf decorations

Height: 18 1/2"; Width: 23"; Depth: 18"

---



England 655 M00511

**An 18th Century Swedish Northern Mahogany Cylinder Desk** with satinwood inlays, the interior fitted with six small drawers and writing slide leather insert





# C. MARIANI ANTIQUES RESTORATION & CUSTOM

---

1301 Harrison Street San Francisco CA 94103  
www.cmarianiantiques.com

Contact: Claudio Mariani  
claudio@cmarianiantiques.com  
Tel 415.541.7868 ~ Fax 415.487.3950

Height: 18 1/2"; Width: 23"; Depth: 18"

---

 C. MARIANI ANTIQUES  
RESTORATION & CUSTOM

---

1301 Harrison Street San Francisco CA 94103  
[www.cmarianiantiques.com](http://www.cmarianiantiques.com)

Contact: Claudio Mariani  
[claudio@cmarianiantiques.com](mailto:claudio@cmarianiantiques.com)  
Tel 415.541.7868 ~ Fax 415.487.3950





C. MARIANI ANTIQUES  
RESTORATION & CUSTOM

---

1301 Harrison Street San Francisco CA 94103  
www.cmarianiantiques.com

Contact: Claudio Mariani  
claudio@cmarianiantiques.com  
Tel 415.541.7868 ~ Fax 415.487.3950

England 655 M00511

**An 18th Century Dutch Marquetry Upright Slant-Front Desk** with two drawers in the lower section with tapered legs ending in brass sabots

Height: 18 1/2"; Width: 23"; Depth: 18"

---



England 655 M00511

**A First Quarter 19th Century Mahogany Demilune Folding Games Table** with satinwood banding ending on tapered spade feet

 C. MARIANI ANTIQUES  
RESTORATION & CUSTOM

---

1301 Harrison Street San Francisco CA 94103  
www.cmarianiantiques.com

Contact: Claudio Mariani  
claudio@cmarianiantiques.com  
Tel 415.541.7868 ~ Fax 415.487.3950

Height: 18 1/2"; Width: 23"; Depth: 18"

---





C. MARIANI ANTIQUES  
RESTORATION & CUSTOM

---

1301 Harrison Street San Francisco CA 94103  
www.cmarianiantiques.com

Contact: Claudio Mariani  
claudio@cmarianiantiques.com  
Tel 415.541.7868 ~ Fax 415.487.3950

England 655 M00511

**An 18th Century French Louis XV Green Painted and  
Parcel-Gilt Side Table** with original green marble top

Height: 18 1/2"; Width: 23"; Depth: 18"

---

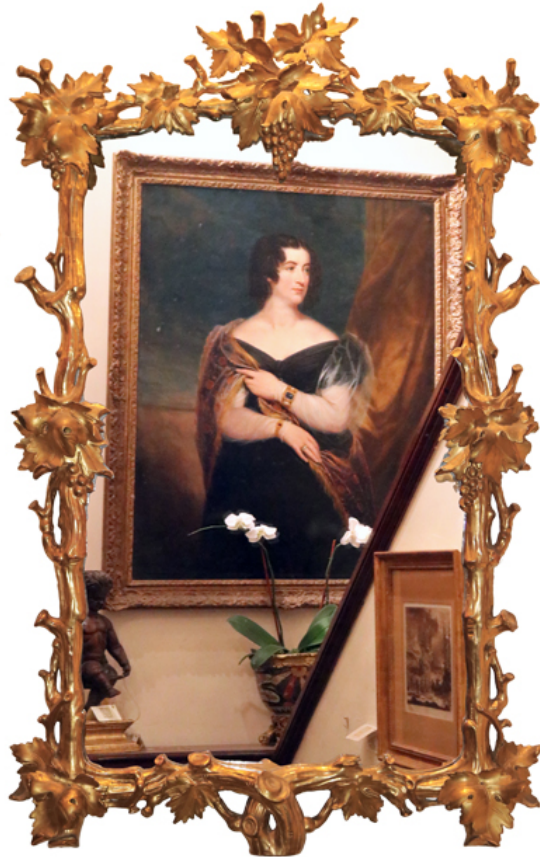




# C. MARIANI ANTIQUES RESTORATION & CUSTOM

1301 Harrison Street San Francisco CA 94103  
[www.cmarianiantiques.com](http://www.cmarianiantiques.com)

Contact: Claudio Mariani  
[claudio@cmarianiantiques.com](mailto:claudio@cmarianiantiques.com)  
Tel 415.541.7868 ~ Fax 415.487.3950



England 655 M00511

**A Late 18th Century Rococo Giltwood Console and Mirror Set**, both elaborately carved with thick fruited vining and with the console top inset with verde issori marble and raised on a stepped and shaped base

Height: 18 1/2"; Width: 23"; Depth: 18"