



# C. MARIANI ANTIQUES RESTORATION & CUSTOM

1301 Harrison Street San Francisco CA 94103  
[www.cmarianiantiques.com](http://www.cmarianiantiques.com)

Contact: Claudio Mariani  
[claudio@cmarianiantiques.com](mailto:claudio@cmarianiantiques.com)  
Tel 415.541.7868 ~ Fax 415.487.3950



Italy 3276 M00058

**A Late 18th Century Rococo Giltwood Console and Mirror Set**, both elaborately carved with thick fruited vining and with the console top inset with verde issori marble and raised on a stepped and shaped base

(Console) Height: 35 3/4"; Width: 35 1/2"; Depth: 18 1/2", (Mirror) Height: 57"; Width: 36"



Italy 3276 M00058

**A Late 18th Century Italian Neoclassical Giltwood Over door/Over Mantle Mirror** crested with a floral and foliate motif and flanked by pot de feu urns with cascading swags above a beaded and roped edge above lobed lower corners

(Console) Height: 35 3/4"; Width: 35 1/2"; Depth: 18 1/2", (Mirror) Height: 57"; Width: 36"

---



Italy 3276 M00058

**A Late 18th Century Italian Neoclassical Giltwood Mirror**  
crested by an eagle with a trailing husk garland in its beak



1301 Harrison Street San Francisco CA 94103  
www.cmarianiantiques.com

Contact: Claudio Mariani  
claudio@cmarianiantiques.com  
Tel 415.541.7868 ~ Fax 415.487.3950

flanked by urn finials above a guilloche motif, Grecian profiles,  
scrolling acanthus leaves, and Greek key pattern accents

(Console) Height: 35 3/4"; Width: 35 1/2"; Depth: 18 1/2", (Mirror)  
Height: 57"; Width: 36"



Italy 3276 M00058

**An 18th Century French Louis XV Style Silver Gilt Trumeau Mirror** with a painted panel of a landscape setting above a



# C. MARIANI ANTIQUES RESTORATION & CUSTOM

---

1301 Harrison Street San Francisco CA 94103  
www.cmarianiantiques.com

Contact: Claudio Mariani  
claudio@cmarianiantiques.com  
Tel 415.541.7868 ~ Fax 415.487.3950

scrolling giltwood border standing proud of the frame and crested with stylized shells, all inside a perimeter mirror border and retaining original mercury glass plates

(Console) Height: 35 3/4"; Width: 35 1/2"; Depth: 18 1/2", (Mirror)  
Height: 57"; Width: 36"

---



Italy 3276 M00058

**An 18th Century Piedmontese Giltwood Mirror,** with extensive fretted rocaille carving crested with an acanthus leaf





C. MARIANI ANTIQUES  
RESTORATION & CUSTOM

---

1301 Harrison Street San Francisco CA 94103  
www.cmarianiantiques.com

Contact: Claudio Mariani  
claudio@cmarianiantiques.com  
Tel 415.541.7868 ~ Fax 415.487.3950

cascade and edged in giltwood stringing and nine separate  
diminutive mirrors

(Console) Height: 35 3/4"; Width: 35 1/2"; Depth: 18 1/2", (Mirror)  
Height: 57"; Width: 36"

---



Italy 3276 M00058

**An Octagonal 18th Century Italian Giltwood Mirror,** with fine rinceau carving details, the two original mirror plates, and



# C. MARIANI ANTIQUES RESTORATION & CUSTOM

---

1301 Harrison Street San Francisco CA 94103  
www.cmarianiantiques.com

Contact: Claudio Mariani  
claudio@cmarianiantiques.com  
Tel 415.541.7868 ~ Fax 415.487.3950

with much of their mercury gilding intact

(Console) Height: 35 3/4"; Width: 35 1/2"; Depth: 18 1/2", (Mirror)  
Height: 57"; Width: 36"

---



Italy 3276 M00058

**An 18th Century High Rococo Italian Giltwood Mirror, with two separate plates surrounded by gold scrolling acanthus leaves**



# C. MARIANI ANTIQUES RESTORATION & CUSTOM

---

1301 Harrison Street San Francisco CA 94103  
www.cmarianiantiques.com

Contact: Claudio Mariani  
claudio@cmarianiantiques.com  
Tel 415.541.7868 ~ Fax 415.487.3950

in a whimsical asymmetrical pattern

(Console) Height: 35 3/4"; Width: 35 1/2"; Depth: 18 1/2", (Mirror)  
Height: 57"; Width: 36"

---

 C. MARIANI ANTIQUES  
RESTORATION & CUSTOM

1301 Harrison Street San Francisco CA 94103  
www.cmarianiantiques.com

Contact: Claudio Mariani  
claudio@cmarianiantiques.com  
Tel 415.541.7868 ~ Fax 415.487.3950





C. MARIANI ANTIQUES  
RESTORATION & CUSTOM

---

1301 Harrison Street San Francisco CA 94103  
www.cmarianiantiques.com

Contact: Claudio Mariani  
claudio@cmarianiantiques.com  
Tel 415.541.7868 ~ Fax 415.487.3950

Italy 3276 M00058

### **A Monumental Italian 18th Century Giltwood Mirror**

comprised of nine glasses secured by gilt rosettes and surrounded by exquisite rocaille carvings of scrolling acanthus leaves, stylized shells, and intricate vines, all in a breathtaking asymmetrical rococo motif, the whole raised on outscrolled feet and crested by a tripartite aigrette flanked by volutes affrontees

(Console) Height: 35 3/4"; Width: 35 1/2"; Depth: 18 1/2", (Mirror)  
Height: 57"; Width: 36"

---



Italy 3276 M00058

**An 18th Century Polychrome and Parcel-Gilt French  
Trumeau Mirror** with en camaieu oil on canvas of a pastoral



scene above a mercury looking glass surrounded by rinceau and foliate designs and accented with fluted banding at the top and bottom

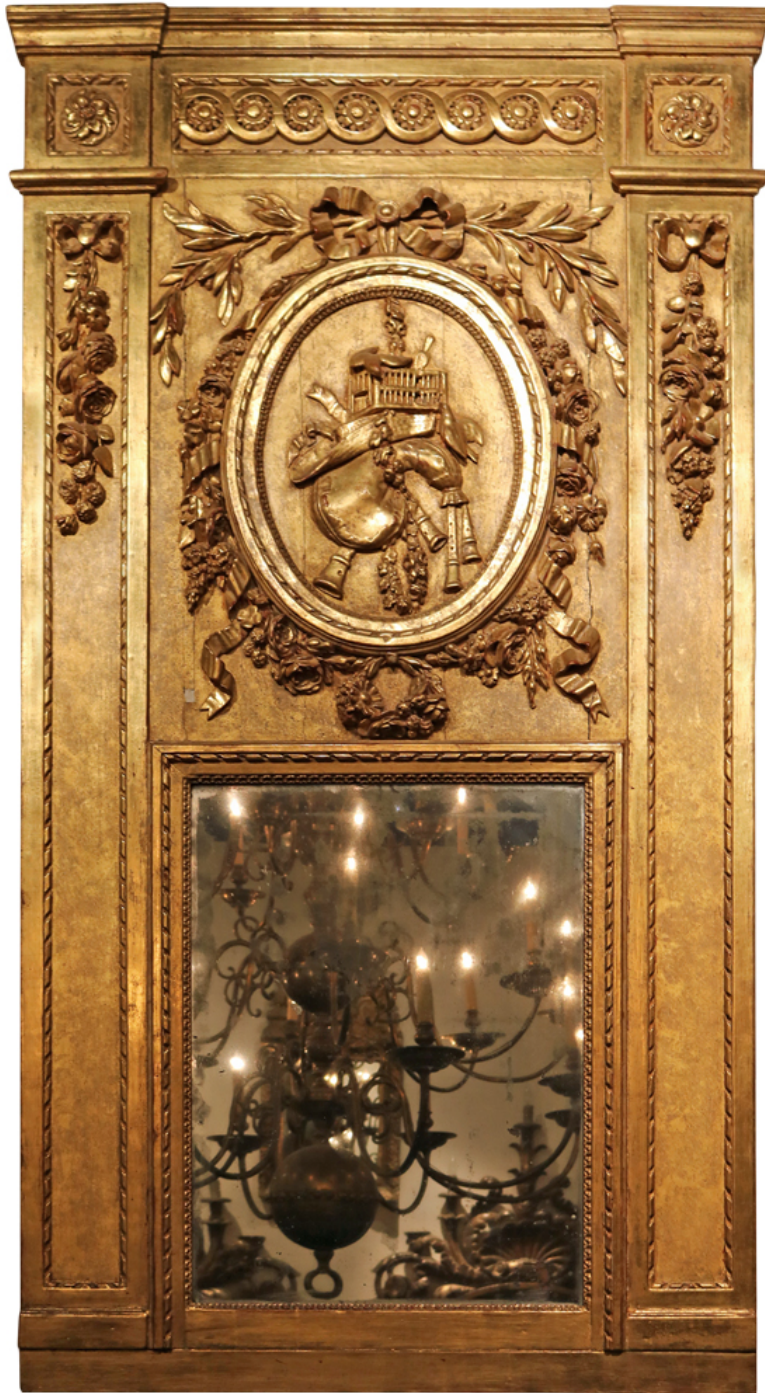
(Console) Height: 35 3/4"; Width: 35 1/2"; Depth: 18 1/2", (Mirror)  
Height: 57"; Width: 36"

---

 C. MARIANI ANTIQUES  
RESTORATION & CUSTOM

1301 Harrison Street San Francisco CA 94103  
www.cmarianiantiques.com

Contact: Claudio Mariani  
claudio@cmarianiantiques.com  
Tel 415.541.7868 ~ Fax 415.487.3950





C. MARIANI ANTIQUES  
RESTORATION & CUSTOM

---

1301 Harrison Street San Francisco CA 94103  
www.cmarianiantiques.com

Contact: Claudio Mariani  
claudio@cmarianiantiques.com  
Tel 415.541.7868 ~ Fax 415.487.3950

Italy 3276 M00058

**An Impressive 18th Century Louis XVI Gilt Trumeau Mirror**  
with pilaster columns detailed with ribband motifs, acanthus  
sprays, and flowers surrounding an unusual allegorical cartouche  
depicting musical instruments, buildings and articles of clothing

(Console) Height: 35 3/4"; Width: 35 1/2"; Depth: 18 1/2", (Mirror)  
Height: 57"; Width: 36"

---



Italy 3276 M00058

**A Luccan Tuscany 18th Century Louis XVI Carved Giltwood Mirror** with original plate glass and crested with fretted anadem

centered by a victory torch and draped with garlands that cascade down the sides and terminating in typically Luccan lions' paw ball and claw "feet" emanating from gilt acanthus foliage

(Console) Height: 35 3/4"; Width: 35 1/2"; Depth: 18 1/2", (Mirror)  
Height: 57"; Width: 36"

---



Italy 3276 M00058

**An 18th Century Dutch Louis XV Carved Oak Trumeau, with  
grisaille on panel of winged putti with aviary and birds above a**



# C. MARIANI ANTIQUES RESTORATION & CUSTOM

---

1301 Harrison Street San Francisco CA 94103  
www.cmarianiantiques.com

Contact: Claudio Mariani  
claudio@cmarianiantiques.com  
Tel 415.541.7868 ~ Fax 415.487.3950

shaped and beveled mirror framed with abundant C and S scrolls  
amid rocaille and surmounted by a stepped cornice

(Console) Height: 35 3/4"; Width: 35 1/2"; Depth: 18 1/2", (Mirror)  
Height: 57"; Width: 36"

---

 C. MARIANI ANTIQUES  
RESTORATION & CUSTOM

---

1301 Harrison Street San Francisco CA 94103  
[www.cmarianiantiques.com](http://www.cmarianiantiques.com)

Contact: Claudio Mariani  
[claudio@cmarianiantiques.com](mailto:claudio@cmarianiantiques.com)  
Tel 415.541.7868 ~ Fax 415.487.3950





Italy 3276 M00058

**A Remarkable Early 18th Century Italian Régence Parcel-Gilt and Polychrome Mirror** with mercury silvered mirror plates and featuring scrolling acanthus leaves surrounding the frame, ivy vines at top and bottom and accented with faux marble detailing

(Console) Height: 35 3/4"; Width: 35 1/2"; Depth: 18 1/2", (Mirror) Height: 57"; Width: 36"

---



Italy 3276 M00058

**A Regal 18th Century Venetian Rococo Carved Gilt Mirror**  
with elaborate cresting rinceau and original mercury glass plate

 C. MARIANI ANTIQUES  
RESTORATION & CUSTOM

---

1301 Harrison Street San Francisco CA 94103  
www.cmarianiantiques.com

Contact: Claudio Mariani  
claudio@cmarianiantiques.com  
Tel 415.541.7868 ~ Fax 415.487.3950

(Console) Height: 35 3/4"; Width: 35 1/2"; Depth: 18 1/2", (Mirror)  
Height: 57"; Width: 36"

---



Italy 3276 M00058

**A Sophisticated 18th Century Italian Luccan Carved Giltwood Mirror**, with intricate floral and foliate motifs and surmounted by an urn issuing forth a stylized acanthus leaf above trailing vines

(Console) Height: 35 3/4"; Width: 35 1/2"; Depth: 18 1/2", (Mirror)  
Height: 57"; Width: 36"

---



Italy 3276 M00058

**A Transitional and Refined 18th Century Luccan Giltwood  
Pier Glass Mirror, the original rectangular mirror plates**



# C. MARIANI ANTIQUES RESTORATION & CUSTOM

---

1301 Harrison Street San Francisco CA 94103  
www.cmarianiantiques.com

Contact: Claudio Mariani  
claudio@cmarianiantiques.com  
Tel 415.541.7868 ~ Fax 415.487.3950

mounted in a carved giltwood frame surmounted by a ribband cresting of a neoclassical female bust, with trailing husks and bordered with scale motifs and acanthus carvings, the whole resting on corinthian capitals

(Console) Height: 35 3/4"; Width: 35 1/2"; Depth: 18 1/2", (Mirror)  
Height: 57"; Width: 36"

---

 C. MARIANI ANTIQUES  
RESTORATION & CUSTOM

1301 Harrison Street San Francisco CA 94103  
www.cmarianiantiques.com

Contact: Claudio Mariani  
claudio@cmarianiantiques.com  
Tel 415.541.7868 ~ Fax 415.487.3950





C. MARIANI ANTIQUES  
RESTORATION & CUSTOM

---

1301 Harrison Street San Francisco CA 94103  
www.cmarianiantiques.com

Contact: Claudio Mariani  
claudio@cmarianiantiques.com  
Tel 415.541.7868 ~ Fax 415.487.3950

Italy 3276 M00058

**An 18th Century Louis XVI Trumeau Mirror** retaining it's original mercury glass plate below an oil on canvas fete galante depicting an aristocratic couple beside a waterfall fountain covered in vines

(Console) Height: 35 3/4"; Width: 35 1/2"; Depth: 18 1/2", (Mirror)  
Height: 57"; Width: 36"

---





Italy 3276 M00058

**A French Régence Giltwood Mirror**, mounted in an elaborate frame of carved scrollwork, surmounted by cresting with floral



# C. MARIANI ANTIQUES RESTORATION & CUSTOM

---

1301 Harrison Street San Francisco CA 94103  
www.cmarianiantiques.com

Contact: Claudio Mariani  
claudio@cmarianiantiques.com  
Tel 415.541.7868 ~ Fax 415.487.3950

carving

(Console) Height: 35 3/4"; Width: 35 1/2"; Depth: 18 1/2", (Mirror)  
Height: 57"; Width: 36"

---



# C. MARIANI ANTIQUES RESTORATION & CUSTOM

1301 Harrison Street San Francisco CA 94103  
[www.cmarianiantiques.com](http://www.cmarianiantiques.com)

Contact: Claudio Mariani  
[claudio@cmarianiantiques.com](mailto:claudio@cmarianiantiques.com)  
Tel 415.541.7868 ~ Fax 415.487.3950





C. MARIANI ANTIQUES  
RESTORATION & CUSTOM

---

1301 Harrison Street San Francisco CA 94103  
www.cmarianiantiques.com

Contact: Claudio Mariani  
claudio@cmarianiantiques.com  
Tel 415.541.7868 ~ Fax 415.487.3950

Italy 3276 M00058

**An 18th Century French Louis XV Trumeau**, parcel-gilt and polychrome, the rectangular mirror plate surrounded by floral and foliate gilt carving surmounted by ribbon, laurel and arrow carving

(Console) Height: 35 3/4"; Width: 35 1/2"; Depth: 18 1/2", (Mirror)  
Height: 57"; Width: 36"

---



Italy 3276 M00058

**An 18th Century Louis XVI Carved Giltwood Mirror, the original rectangular mirror plate mounted in a giltwood frame**

surmounted by ribboning, an open book and laurel leaves the whole with verde polychrome accents

(Console) Height: 35 3/4"; Width: 35 1/2"; Depth: 18 1/2", (Mirror)  
Height: 57"; Width: 36"

---

 C. MARIANI ANTIQUES  
RESTORATION & CUSTOM

1301 Harrison Street San Francisco CA 94103  
www.cmarianiantiques.com

Contact: Claudio Mariani  
claudio@cmarianiantiques.com  
Tel 415.541.7868 ~ Fax 415.487.3950



Italy 3276 M00058

**A French 18th Century Polychrome and Parcel-Gilt Trumeau Mirror**, the rectangular mirror plate surmounted by carved ribbon festooning musical instruments and mounted in a verde polychrome frame with gilt accents

(Console) Height: 35 3/4"; Width: 35 1/2"; Depth: 18 1/2", (Mirror)  
Height: 57"; Width: 36"

---



 **C. MARIANI ANTIQUES**  
**RESTORATION & CUSTOM**

1301 Harrison Street San Francisco CA 94103  
www.cmarianiantiques.com

Contact: Claudio Mariani  
claudio@cmarianiantiques.com  
Tel 415.541.7868 ~ Fax 415.487.3950



Italy 3276 M00058

**A French Louis XVI Trumeau**, the original spherical paysage oil painting framed by gilt floral, ribbon, tribute, and swag carvings



C. MARIANI ANTIQUES  
RESTORATION & CUSTOM

---

1301 Harrison Street San Francisco CA 94103  
www.cmarianiantiques.com

Contact: Claudio Mariani  
claudio@cmarianiantiques.com  
Tel 415.541.7868 ~ Fax 415.487.3950

above a rectangular mirror plate between two gilt neoclassical  
urns

(Console) Height: 35 3/4"; Width: 35 1/2"; Depth: 18 1/2", (Mirror)  
Height: 57"; Width: 36"

---



Italy 3276 M00058

**A Fine 18th Century Italian Louis XVI Parcel-Gilt Pier Mirror**, the rectangular divided plate within a ribband border

surmounted by a panel of scrolling acanthus leaves and swags painted and highlighted with gilding within a moulded cornice above alto rilievo corner eagles; Provenance: Estate of Anthony Duquette

(Console) Height: 35 3/4"; Width: 35 1/2"; Depth: 18 1/2", (Mirror)  
Height: 57"; Width: 36"

---

 C. MARIANI ANTIQUES  
RESTORATION & CUSTOM

---

1301 Harrison Street San Francisco CA 94103  
www.cmarianiantiques.com

Contact: Claudio Mariani  
claudio@cmarianiantiques.com  
Tel 415.541.7868 ~ Fax 415.487.3950



Italy 3276 M00058

**An Italian 19th Century Giltwood Mirror**, the rectangular divided mirror plate surmounted by pierced scrolling acanthus leaves and vines the sides flanked by mirrored borders and trailing flowers and vines

(Console) Height: 35 3/4"; Width: 35 1/2"; Depth: 18 1/2", (Mirror)  
Height: 57"; Width: 36"

---



# C. MARIANI ANTIQUES RESTORATION & CUSTOM

1301 Harrison Street San Francisco CA 94103  
www.cmarianiantiques.com

Contact: Claudio Mariani  
claudio@cmarianiantiques.com  
Tel 415.541.7868 ~ Fax 415.487.3950



Italy 3276 M00058

**An Exquisite Pair of 18th Century Giltwood Mirrors,** the rectangular mirror plate surmounted by pierced and scrolling acanthus leaves above a cartouche-shaped mirror flanked by descending foliated C-scrolls and flowers ending in dolphin-carved supports

(Console) Height: 35 3/4"; Width: 35 1/2"; Depth: 18 1/2", (Mirror)  
Height: 57"; Width: 36"

---



 C. MARIANI ANTIQUES  
RESTORATION & CUSTOM

1301 Harrison Street San Francisco CA 94103  
www.cmarianiantiques.com

Contact: Claudio Mariani  
claudio@cmarianiantiques.com  
Tel 415.541.7868 ~ Fax 415.487.3950





C. MARIANI ANTIQUES  
RESTORATION & CUSTOM

---

1301 Harrison Street San Francisco CA 94103  
www.cmarianiantiques.com

Contact: Claudio Mariani  
claudio@cmarianiantiques.com  
Tel 415.541.7868 ~ Fax 415.487.3950

Italy 3276 M00058

**A Dramatic 18th Century French Louis XVI Carved  
Giltwood Mirror** with original mercury plate crested with  
musical instruments and olive leaves

(Console) Height: 35 3/4"; Width: 35 1/2"; Depth: 18 1/2", (Mirror)  
Height: 57"; Width: 36"

---



Italy 3276 M00058

**A 19th Century Italian Oval Giltwood Mirror** with moulded border carved with acorns and oak leaves and surmounted by



C. MARIANI ANTIQUES  
RESTORATION & CUSTOM

---

1301 Harrison Street San Francisco CA 94103  
www.cmarianiantiques.com

Contact: Claudio Mariani  
claudio@cmarianiantiques.com  
Tel 415.541.7868 ~ Fax 415.487.3950

light open work with pierced ribband cresting

(Console) Height: 35 3/4"; Width: 35 1/2"; Depth: 18 1/2", (Mirror)  
Height: 57"; Width: 36"

---



Italy 3276 M00058

**An Elaborately Carved 18th Century Italian Giltwood Rococo Mirror** retaining the original plate glass

 C. MARIANI ANTIQUES  
RESTORATION & CUSTOM

---

1301 Harrison Street San Francisco CA 94103  
www.cmarianiantiques.com

Contact: Claudio Mariani  
claudio@cmarianiantiques.com  
Tel 415.541.7868 ~ Fax 415.487.3950

(Console) Height: 35 3/4"; Width: 35 1/2"; Depth: 18 1/2", (Mirror)  
Height: 57"; Width: 36"

---



Italy 3276 M00058

**A Fine 18th Century French Louis XVI Giltwood Trophy Mirror** crested with banners, a shield and a helmet, retaining the original mercury plate glass

(Console) Height: 35 3/4"; Width: 35 1/2"; Depth: 18 1/2", (Mirror)  
Height: 57"; Width: 36"

---

 C. MARIANI ANTIQUES  
RESTORATION & CUSTOM

---

1301 Harrison Street San Francisco CA 94103  
www.cmarianiantiques.com

Contact: Claudio Mariani  
claudio@cmarianiantiques.com  
Tel 415.541.7868 ~ Fax 415.487.3950





Italy 3276 M00058

**A Large 19th Century English Black Lacquer Chinoiserie  
Mirror** accented with scalloped beveling

(Console) Height: 35 3/4"; Width: 35 1/2"; Depth: 18 1/2", (Mirror)  
Height: 57"; Width: 36"

---



Italy 3276 M00058

**An 18th Century Italian Polychrome & Parcel Silver-Gilt  
Trumeau**, the crest centered by a carved female figure and urn



# C. MARIANI ANTIQUES RESTORATION & CUSTOM

---

1301 Harrison Street San Francisco CA 94103  
www.cmarianiantiques.com

Contact: Claudio Mariani  
claudio@cmarianiantiques.com  
Tel 415.541.7868 ~ Fax 415.487.3950

(Console) Height: 35 3/4"; Width: 35 1/2"; Depth: 18 1/2", (Mirror)  
Height: 57"; Width: 36"

---

 C. MARIANI ANTIQUES  
RESTORATION & CUSTOM

1301 Harrison Street San Francisco CA 94103  
www.cmarianiantiques.com

Contact: Claudio Mariani  
claudio@cmarianiantiques.com  
Tel 415.541.7868 ~ Fax 415.487.3950



Italy 3276 M00058

**A Dramatic Late 18th Century Italian Giltwood and Bois  
Noirci Psyche Dressing Mirror** with tripod hairy paw base

(Console) Height: 35 3/4"; Width: 35 1/2"; Depth: 18 1/2", (Mirror)  
Height: 57"; Width: 36"