



Italy 3434 M00529

**An Elegant 18th Century Italian Luccan Carved Giltwood Mirror**, with intricate floral and foliate motifs and surmounted by



C. MARIANI ANTIQUES  
RESTORATION & CUSTOM

---

1301 Harrison Street San Francisco CA 94103  
www.cmarianiantiques.com

Contact: Claudio Mariani  
claudio@cmarianiantiques.com  
Tel 415.541.7868 ~ Fax 415.487.3950

a floral spray and retaining its original mercury glass plate

Height: 80"; Width: 35"

---



# C. MARIANI ANTIQUES RESTORATION & CUSTOM

1301 Harrison Street San Francisco CA 94103  
www.cmarianiantiques.com

Contact: Claudio Mariani  
claudio@cmarianiantiques.com  
Tel 415.541.7868 ~ Fax 415.487.3950



Italy 3434 M00529

**A Pair of 18th Century Italian Giltwood Mirrors,** the original mercury plates mounted in frames crested with gryphons flanked by trailing garlands at the corners and with a foliate swags centering the base rail

Height: 80"; Width: 35"

---



Italy 3434 M00529

**A Pair of 18th Century Giltwood Florentine Mirrors,** with two candle arms emanating from the base, and the frames

embellished with high rococo carved acanthus leaf motifs

Height: 80"; Width: 35"

---



Italy 3434 M00529

**A Late 18th Century Italian Neoclassical Giltwood Over door/Over Mantle Mirror** crested with a floral and foliate motif and flanked by pot de feu urns with cascading swags above a



C. MARIANI ANTIQUES  
RESTORATION & CUSTOM

---

1301 Harrison Street San Francisco CA 94103  
www.cmarianiantiques.com

Contact: Claudio Mariani  
claudio@cmarianiantiques.com  
Tel 415.541.7868 ~ Fax 415.487.3950

beaded and roped edge above lobed lower corners

Height: 80"; Width: 35"

---



# C. MARIANI ANTIQUES RESTORATION & CUSTOM

1301 Harrison Street San Francisco CA 94103  
[www.cmarianiantiques.com](http://www.cmarianiantiques.com)

Contact: Claudio Mariani  
[claudio@cmarianiantiques.com](mailto:claudio@cmarianiantiques.com)  
Tel 415.541.7868 ~ Fax 415.487.3950







C. MARIANI ANTIQUES  
RESTORATION & CUSTOM

---

1301 Harrison Street San Francisco CA 94103  
www.cmarianiantiques.com

Contact: Claudio Mariani  
claudio@cmarianiantiques.com  
Tel 415.541.7868 ~ Fax 415.487.3950

Italy 3434 M00529

**A Late 18th Century Rococo Giltwood Console and Mirror Set**, both elaborately carved with thick fruited vining and with the console top inset with verde issori marble and raised on a stepped and shaped base

Height: 80"; Width: 35"

---

 C. MARIANI ANTIQUES  
RESTORATION & CUSTOM

1301 Harrison Street San Francisco CA 94103  
www.cmarianiantiques.com

Contact: Claudio Mariani  
claudio@cmarianiantiques.com  
Tel 415.541.7868 ~ Fax 415.487.3950



Italy 3434 M00529



C. MARIANI ANTIQUES  
RESTORATION & CUSTOM

---

1301 Harrison Street San Francisco CA 94103  
www.cmarianiantiques.com

Contact: Claudio Mariani  
claudio@cmarianiantiques.com  
Tel 415.541.7868 ~ Fax 415.487.3950

**A Pair of Late 18th Century Italian Louis XVI Giltwood Mirrors** retaining their original mercury plates and crested with ribband bows and intricate acanthus detailing with the leaves on one side matching the reverse detailing on the other, the whole surrounded by a guilloche border above neoclassical pier “feet”  
Height: 80"; Width: 35"

---



Italy 3434 M00529

**A Pair of 19th Century Bra de Lumiere Rococo Giltwood Mirrors**, elaborate rocaille cartouche frames surrounding original mirror plates and issuing two candle arms at the base

Height: 80"; Width: 35"



Italy 3434 M00529

## **A French 18th Century Louis XVI Giltwood Neoclassical**



---

1301 Harrison Street San Francisco CA 94103  
www.cmarianiantiques.com

Contact: Claudio Mariani  
claudio@cmarianiantiques.com  
Tel 415.541.7868 ~ Fax 415.487.3950

**Mirror**, carved with trailing husks, crested with a trophy centered by a pair of kissing doves and retaining its original mercury plates

Height: 80"; Width: 35"

---



Italy 3434 M00529

**An 18th Century French Louis XV Style Silver Gilt Trumeau Mirror** with a painted panel of a landscape setting above a



# C. MARIANI ANTIQUES RESTORATION & CUSTOM

---

1301 Harrison Street San Francisco CA 94103  
www.cmarianiantiques.com

Contact: Claudio Mariani  
claudio@cmarianiantiques.com  
Tel 415.541.7868 ~ Fax 415.487.3950

scrolling giltwood border standing proud of the frame and crested with stylized shells, all inside a perimeter mirror border and retaining original mercury glass plates

Height: 80"; Width: 35"

---





Italy 3434 M00529

**An 18th Century English Black and Gold Chinoiserie  
Adjustable Vanity Mirror** with its original mirror plate above



C. MARIANI ANTIQUES  
RESTORATION & CUSTOM

---

1301 Harrison Street San Francisco CA 94103  
www.cmarianiantiques.com

Contact: Claudio Mariani  
claudio@cmarianiantiques.com  
Tel 415.541.7868 ~ Fax 415.487.3950

two sets of serpentine double drawers, two with locks and raised  
on incurved "Chinese" bracket feet

Height: 80"; Width: 35"

---



Italy 3434 M00529

**An 18th Century Rococo Giltwood Mirror**, crested with a vase filled with flowers and holding suspended garlands



---

1301 Harrison Street San Francisco CA 94103  
www.cmarianiantiques.com

Contact: Claudio Mariani  
claudio@cmarianiantiques.com  
Tel 415.541.7868 ~ Fax 415.487.3950

cascading down the sides and raised on shaped piers centered  
with a stylized acanthus spray

Height: 80"; Width: 35"

---



# C. MARIANI ANTIQUES RESTORATION & CUSTOM

1301 Harrison Street San Francisco CA 94103  
www.cmarianiantiques.com

Contact: Claudio Mariani  
claudio@cmarianiantiques.com  
Tel 415.541.7868 ~ Fax 415.487.3950



Italy 3434 M00529

**A Pair of Rococo Venetian Giltwood Mirrors**, each comprised of a main mirror below an accent mirror in the cresting and creating dramatic lighting with a pair of scarlet Murano glass candleholders at the base

Height: 80"; Width: 35"

---



Italy 3434 M00529

**A 19th Century Italian Meuble de Style Rococo Giltwood Mirror** with shaped looking glass with fretted and stylized

acanthus, floral and rocaille frame

Height: 80"; Width: 35"

---





Italy 3434 M00529

**A 17th Century Italian Ebonized Mirror Inlaid with Bone**  
stringing and arabesques along with crimson and azure  
cabochons surrounding a later beveled mirror plate with a stellate  
etched motif

Height: 80"; Width: 35"

---



Italy 3434 M00529

**A Dramatic 18th Century Luccan Polychrome and Parcel-Gilt Pier Mirror** retaining its original mercury glass plate

mounted in a fretted neoclassical frame crested with ebonized pine cone finials above a colonnade of palmettes flanked by hanging swags above a centered acanthus and rosette motif flanked by conforming pillar "feet"

Height: 80"; Width: 35"

---



Italy 3434 M00529

**An 18th Century High Rococo Italian Giltwood Mirror, with two separate plates surrounded by gold scrolling acanthus leaves**

in a whimsical asymmetrical pattern

Height: 80"; Width: 35"

---





C. MARIANI ANTIQUES  
RESTORATION & CUSTOM

---

1301 Harrison Street San Francisco CA 94103  
www.cmarianiantiques.com

Contact: Claudio Mariani  
claudio@cmarianiantiques.com  
Tel 415.541.7868 ~ Fax 415.487.3950

Italy 3434 M00529

**An Octagonal 18th Century Italian Giltwood Mirror,** with fine rinceau carving details, the two original mirror plates, and with much of their mercury gilding intact

Height: 80"; Width: 35"

---



Italy 3434 M00529

**A French Giltwood Transitional Louis XV to Louis XVI  
Mirror** with an elaborate carved cresting comprised of a

mandolin amid rocaille scrolling and foliate motifs

Height: 80"; Width: 35"

---





Italy 3434 M00529

**An 18th Century Piedmontese Giltwood Mirror,** with extensive fretted rocaille carving crested with an acanthus leaf cascade and edged in giltwood stringing and nine separate diminutive mirrors

Height: 80"; Width: 35"

---



Italy 3434 M00529

**A Luccan Tuscany 18th Century Louis XVI Carved Giltwood Mirror** with original plate glass and crested with fretted anadem



1301 Harrison Street San Francisco CA 94103  
www.cmarianiantiques.com

Contact: Claudio Mariani  
claudio@cmarianiantiques.com  
Tel 415.541.7868 ~ Fax 415.487.3950

centered by a victory torch and draped with garlands that cascade down the sides and terminating in typically Luccan lions' paw ball and claw "feet" emanating from gilt acanthus foliage

Height: 80"; Width: 35"

---

 C. MARIANI ANTIQUES  
RESTORATION & CUSTOM

1301 Harrison Street San Francisco CA 94103  
www.cmarianiantiques.com

Contact: Claudio Mariani  
claudio@cmarianiantiques.com  
Tel 415.541.7868 ~ Fax 415.487.3950



Italy 3434 M00529

**An Impressive 18th Century Louis XVI Gilt Trumeau Mirror**  
with pilaster columns detailed with ribband motifs, acanthus  
sprays, and flowers surrounding an unusual allegorical cartouche  
depicting musical instruments, buildings and articles of clothing

Height: 80"; Width: 35"

---



Italy 3434 M00529

**An 18th Century Polychrome and Parcel-Gilt French  
Trumeau Mirror** with en camaieu oil on canvas of a pastoral



C. MARIANI ANTIQUES  
RESTORATION & CUSTOM

---

1301 Harrison Street San Francisco CA 94103  
www.cmarianiantiques.com

Contact: Claudio Mariani  
claudio@cmarianiantiques.com  
Tel 415.541.7868 ~ Fax 415.487.3950

scene above a mercury looking glass surrounded by rinceau and foliate designs and accented with fluted banding at the top and bottom

Height: 80"; Width: 35"

---

 C. MARIANI ANTIQUES  
RESTORATION & CUSTOM

---

1301 Harrison Street San Francisco CA 94103  
[www.cmarianiantiques.com](http://www.cmarianiantiques.com)

Contact: Claudio Mariani  
[claudio@cmarianiantiques.com](mailto:claudio@cmarianiantiques.com)  
Tel 415.541.7868 ~ Fax 415.487.3950







C. MARIANI ANTIQUES  
RESTORATION & CUSTOM

---

1301 Harrison Street San Francisco CA 94103  
www.cmarianiantiques.com

Contact: Claudio Mariani  
claudio@cmarianiantiques.com  
Tel 415.541.7868 ~ Fax 415.487.3950

Italy 3434 M00529

**A Remarkable Early 18th Century Italian Régence Parcel-Gilt and Polychrome Mirror** with mercury silvered mirror plates and featuring scrolling acanthus leaves surrounding the frame, ivy vines at top and bottom and accented with faux marble detailing

Height: 80"; Width: 35"

---

 **C. MARIANI ANTIQUES**  
**RESTORATION & CUSTOM**

1301 Harrison Street San Francisco CA 94103  
www.cmarianiantiques.com

Contact: Claudio Mariani  
claudio@cmarianiantiques.com  
Tel 415.541.7868 ~ Fax 415.487.3950



Italy 3434 M00529

**An 18th Century Dutch Louis XV Carved Oak Trumeau, with  
grisaille on panel of winged putti with aviary and birds above a**



C. MARIANI ANTIQUES  
RESTORATION & CUSTOM

---

1301 Harrison Street San Francisco CA 94103  
www.cmarianiantiques.com

Contact: Claudio Mariani  
claudio@cmarianiantiques.com  
Tel 415.541.7868 ~ Fax 415.487.3950

shaped and beveled mirror framed with abundant C and S scrolls  
amid rocaille and surmounted by a stepped cornice

Height: 80"; Width: 35"

---



Italy 3434 M00529

**A 19th Century Charles X Cheval Mirror** with a hidden drawer  
and lovely swan neck supports

 C. MARIANI ANTIQUES  
RESTORATION & CUSTOM

---

1301 Harrison Street San Francisco CA 94103  
www.cmarianiantiques.com

Contact: Claudio Mariani  
claudio@cmarianiantiques.com  
Tel 415.541.7868 ~ Fax 415.487.3950

Height: 80"; Width: 35"

---





C. MARIANI ANTIQUES  
RESTORATION & CUSTOM

---

1301 Harrison Street San Francisco CA 94103  
www.cmarianiantiques.com

Contact: Claudio Mariani  
claudio@cmarianiantiques.com  
Tel 415.541.7868 ~ Fax 415.487.3950

Italy 3434 M00529

**A Regal 18th Century Venetian Rococo Carved Gilt Mirror**  
with elaborate cresting rinceau and original mercury glass plate

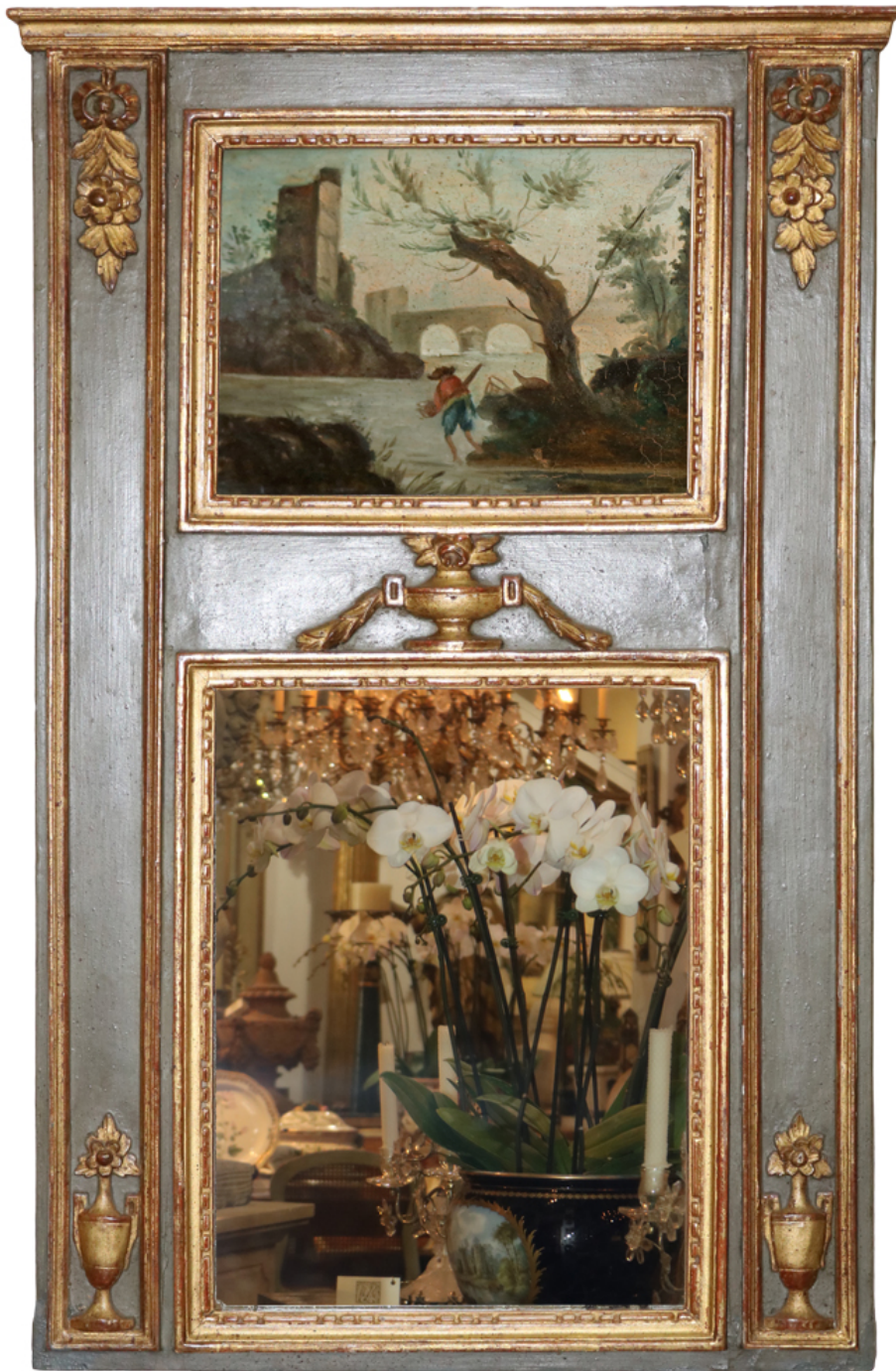
Height: 80"; Width: 35"

---

 C. MARIANI ANTIQUES  
RESTORATION & CUSTOM

1301 Harrison Street San Francisco CA 94103  
www.cmarianiantiques.com

Contact: Claudio Mariani  
claudio@cmarianiantiques.com  
Tel 415.541.7868 ~ Fax 415.487.3950





C. MARIANI ANTIQUES  
RESTORATION & CUSTOM

---

1301 Harrison Street San Francisco CA 94103  
www.cmarianiantiques.com

Contact: Claudio Mariani  
claudio@cmarianiantiques.com  
Tel 415.541.7868 ~ Fax 415.487.3950

Italy 3434 M00529

**A Rare Diminutive 18th Century Trumeau** in green polychrome with oxide gilt urns and festoons, featuring a verdant river scene with bridge and castle ruins

Height: 80"; Width: 35"

---



 C. MARIANI ANTIQUES  
RESTORATION & CUSTOM

1301 Harrison Street San Francisco CA 94103  
www.cmarianiantiques.com

Contact: Claudio Mariani  
claudio@cmarianiantiques.com  
Tel 415.541.7868 ~ Fax 415.487.3950





C. MARIANI ANTIQUES  
RESTORATION & CUSTOM

---

1301 Harrison Street San Francisco CA 94103  
www.cmarianiantiques.com

Contact: Claudio Mariani  
claudio@cmarianiantiques.com  
Tel 415.541.7868 ~ Fax 415.487.3950

Italy 3434 M00529

**A Distinctive and Diminutive 18th Century Régence Mirror,**  
the polychrome and parcel-gilt frame carved with ribband, floral  
and foliate motifs and featuring six original mirror plates

Height: 80"; Width: 35"

---



Italy 3434 M00529

**An Oval 19th Century Italian Silver Gilt Mirror**, the wood and gesso frame carved with foliate and swag designs and

 C. MARIANI ANTIQUES  
RESTORATION & CUSTOM

---

1301 Harrison Street San Francisco CA 94103  
www.cmarianiantiques.com

Contact: Claudio Mariani  
claudio@cmarianiantiques.com  
Tel 415.541.7868 ~ Fax 415.487.3950

surrounding the original plate glass

Height: 80"; Width: 35"

---



Italy 3434 M00529

**A Transitional and Refined 18th Century Luccan Giltwood Pier Glass Mirror**, the original rectangular mirror plates mounted in a carved giltwood frame surmounted by a ribband cresting of a neoclassical female bust, with trailing husks and bordered with scale motifs and acanthus carvings, the whole resting on corinthian capitals

Height: 80"; Width: 35"

---

 C. MARIANI ANTIQUES  
RESTORATION & CUSTOM

1301 Harrison Street San Francisco CA 94103  
www.cmarianiantiques.com

Contact: Claudio Mariani  
claudio@cmarianiantiques.com  
Tel 415.541.7868 ~ Fax 415.487.3950





C. MARIANI ANTIQUES  
RESTORATION & CUSTOM

---

1301 Harrison Street San Francisco CA 94103  
www.cmarianiantiques.com

Contact: Claudio Mariani  
claudio@cmarianiantiques.com  
Tel 415.541.7868 ~ Fax 415.487.3950

Italy 3434 M00529

**An 18th Century Louis XVI Trumeau Mirror** retaining it's original mercury glass plate below an oil on canvas fete galante depicting an aristocratic couple beside a waterfall fountain covered in vines

Height: 80"; Width: 35"

---



Italy 3434 M00529

**A Sophisticated 18th Century Italian Luccan Carved Giltwood Mirror**, with intricate floral and foliate motifs and





C. MARIANI ANTIQUES  
RESTORATION & CUSTOM

---

1301 Harrison Street San Francisco CA 94103  
www.cmarianiantiques.com

Contact: Claudio Mariani  
claudio@cmarianiantiques.com  
Tel 415.541.7868 ~ Fax 415.487.3950

surmounted by an urn issuing forth a stylized acanthus leaf above  
trailing vines

Height: 80"; Width: 35"