



Italy 4456 M00059

**A Striking Late 18th Century Italian Louis XV Giltwood Console** with breccia marble top, accented with Siena marble along the edge, the apron carved with rocaille, foliate and shell motifs, the whole resting on four cabriole legs connected by scrolling rocaille X-shaped stretcher with a stylized shell at its



C. MARIANI ANTIQUES  
RESTORATION & CUSTOM

---

1301 Harrison Street San Francisco CA 94103  
www.cmarianiantiques.com

Contact: Claudio Mariani  
claudio@cmarianiantiques.com  
Tel 415.541.7868 ~ Fax 415.487.3950

center

Height: 37"; Width: 55 1/4"; Depth: 27 1/2"

---

 C. MARIANI ANTIQUES  
RESTORATION & CUSTOM

---

1301 Harrison Street San Francisco CA 94103  
www.cmarianiantiques.com

Contact: Claudio Mariani  
claudio@cmarianiantiques.com  
Tel 415.541.7868 ~ Fax 415.487.3950



Italy 4456 M00059



C. MARIANI ANTIQUES  
RESTORATION & CUSTOM

---

1301 Harrison Street San Francisco CA 94103  
www.cmarianiantiques.com

Contact: Claudio Mariani  
claudio@cmarianiantiques.com  
Tel 415.541.7868 ~ Fax 415.487.3950

**A 19th Century French Bouillotte Lamp** with a dark umber  
tole shade, with three lights emanating from scrolled candle  
arms, all resting in a circular dished base resting on claw feet and  
now electrified

Height: 37"; Width: 55 1/4"; Depth: 27 1/2"

---



# C. MARIANI ANTIQUES RESTORATION & CUSTOM

1301 Harrison Street San Francisco CA 94103  
www.cmarianiantiques.com

Contact: Claudio Mariani  
claudio@cmarianiantiques.com  
Tel 415.541.7868 ~ Fax 415.487.3950



Italy 4456 M00059

**A Pair of 19th Century Italian Brass Wall Sconces,** with  
three scrolling arms emanating from a sunburst medallion

Height: 37"; Width: 55 1/4"; Depth: 27 1/2"

---



Italy 4456 M00059

**A 19th Century Anglo-Indian Ebonized Box on Stand**, the top centered by mother-of-pearl and rocaille brass inlay, framed by a mother-of-pearl quatrefoil inlay and brass trim, continuing along the sides, with a mother-of-pearl escutcheon at the front

and inner brass hinges engraved with foliate and geometric patterns, now fitted with a lined interior, and raised on a later stand with ebonized faux bamboo legs

Height: 37"; Width: 55 1/4"; Depth: 27 1/2"

---



Italy 4456 M00059

**A 19th Century French Cherrywood Farm Table** with a planked top above one drawer, with shaped apron, the whole raised on simple cabriole legs



Height: 37"; Width: 55 1/4"; Depth: 27 1/2"

---



Italy 4456 M00059

**A 19th Century Italian Pietra Dura Table** with floral and foliate motifs, the whole above a scrolling and foliate brass apron and resting on six feet

 C. MARIANI ANTIQUES  
RESTORATION & CUSTOM

---

1301 Harrison Street San Francisco CA 94103  
www.cmarianiantiques.com

Contact: Claudio Mariani  
claudio@cmarianiantiques.com  
Tel 415.541.7868 ~ Fax 415.487.3950

Height: 37"; Width: 55 1/4"; Depth: 27 1/2"

---



Italy 4456 M00059

## **A Pair of 18th Century Italian Louis XVI Bedside**

**Commodinos**, in the Maggiolini manner and in excellent condition, with one functioning drawer above a door opening for extra storage, the top, front and sides with marquetry scenes of villages and foliate motifs all raised on squared and tapering legs

Height: 37"; Width: 55 1/4"; Depth: 27 1/2"

---



# C. MARIANI ANTIQUES RESTORATION & CUSTOM

1301 Harrison Street San Francisco CA 94103  
[www.cmarianiantiques.com](http://www.cmarianiantiques.com)

Contact: Claudio Mariani  
[claudio@cmarianiantiques.com](mailto:claudio@cmarianiantiques.com)  
Tel 415.541.7868 ~ Fax 415.487.3950



Italy 4456 M00059

**A Early 19th Century Federal Mahogany Chest of Drawers**  
with six functioning drawers with brass handles, the front flanked  
by turned columns, the whole atop four legs terminating in ball  
feet

Height: 37"; Width: 55 1/4"; Depth: 27 1/2"



Italy 4456 M00059

**A Fine 19th Century French Première-Partie Boule  
Marquetry Jewel Box**, imported, sold by and stamped Asprey  
London, with red tortoiseshell ground inlaid with brass rocaille  
veneers

Height: 37"; Width: 55 1/4"; Depth: 27 1/2"

---



Italy 4456 M00059

**A 19th Century English Regency Chinese Export Hinged Wedding Box**, lacquered in black and red with gilt motifs of flowers, butterflies, and men lounging in their temple gardens, the box standing on a conforming and later base with double faux bamboo base

Height: 37"; Width: 55 1/4"; Depth: 27 1/2"

---



Italy 4456 M00059

**A 19th Century Diminutive Tortoiseshell Tea Caddy, the**





# C. MARIANI ANTIQUES RESTORATION & CUSTOM

---

1301 Harrison Street San Francisco CA 94103  
www.cmarianiantiques.com

Contact: Claudio Mariani  
claudio@cmarianiantiques.com  
Tel 415.541.7868 ~ Fax 415.487.3950

domed top embellished with pewter stringing and centered by a sterling silver medallion at the top above a rectangular form with a sterling escutcheon, and opening to reveal two lidded interior compartments with the whole all raised on silvered ball feet

Height: 37"; Width: 55 1/4"; Depth: 27 1/2"

---



Italy 4456 M00059

**A Pair of Elaborate 19th Century Dutch Patinated Brass Ecclesiastical Candle Screens** made in Baroque manner,



---

1301 Harrison Street San Francisco CA 94103  
www.cmarianiantiques.com

Contact: Claudio Mariani  
claudio@cmarianiantiques.com  
Tel 415.541.7868 ~ Fax 415.487.3950

featuring a large sunflower and leaves, and resting on a  
pyramidal faux marble base

Height: 37"; Width: 55 1/4"; Depth: 27 1/2"

---



Italy 4456 M00059

**An 1810 French Tortoiseshell Table Snuff Box with 18k  
Rose Gold Hinge and Mounts, accented with an exquisitely**



1301 Harrison Street San Francisco CA 94103  
www.cmarianiantiques.com

Contact: Claudio Mariani  
claudio@cmarianiantiques.com  
Tel 415.541.7868 ~ Fax 415.487.3950

---

hand painted miniature portraiture on porcelain of a beauty, the portrait protected by a crystal cover; the box itself is solid shell, thick and in perfect condition. This piece is pristine, with no warping, damage or restorations

Height: 37"; Width: 55 1/4"; Depth: 27 1/2"

---



Italy 4456 M00059

**An Early 19th Century George III Pagoda-Top Pressed Tortoiseshell Double Tea Caddy**, with architectural pressed panels and flute pressed canted corners, inlaid silver piping, escutcheon and cartouche titled, “Jane Thomas”

 C. MARIANI ANTIQUES  
RESTORATION & CUSTOM

---

1301 Harrison Street San Francisco CA 94103  
www.cmarianiantiques.com

Contact: Claudio Mariani  
claudio@cmarianiantiques.com  
Tel 415.541.7868 ~ Fax 415.487.3950

Height: 37"; Width: 55 1/4"; Depth: 27 1/2"

---





C. MARIANI ANTIQUES  
RESTORATION & CUSTOM

---

1301 Harrison Street San Francisco CA 94103  
www.cmarianiantiques.com

Contact: Claudio Mariani  
claudio@cmarianiantiques.com  
Tel 415.541.7868 ~ Fax 415.487.3950

Italy 4456 M00059

**A Late 18th Century Octagonal Ridged Bone Tented Top Tea Caddy**, with tortoiseshell stringing, silver knob finial, escutcheon and oval monogrammed cartouche

Height: 37"; Width: 55 1/4"; Depth: 27 1/2"

---





Italy 4456 M00059

**A Late 18th Century Octagonal Bone Tea Caddy, with tortoiseshell trim and silver knob handle, escutcheon and shield**

shaped cartouche, with floating lid and key

Height: 37"; Width: 55 1/4"; Depth: 27 1/2"

---



Italy 4456 M00059

**A 19th Century Palmwood Snuff Box** with tortoiseshell interior

Height: 37"; Width: 55 1/4"; Depth: 27 1/2"



Italy 4456 M00059

**A Late 19th Century English Lund Tortoiseshell Box** with  
fitted interior with bone trim

Height: 37"; Width: 55 1/4"; Depth: 27 1/2"

---



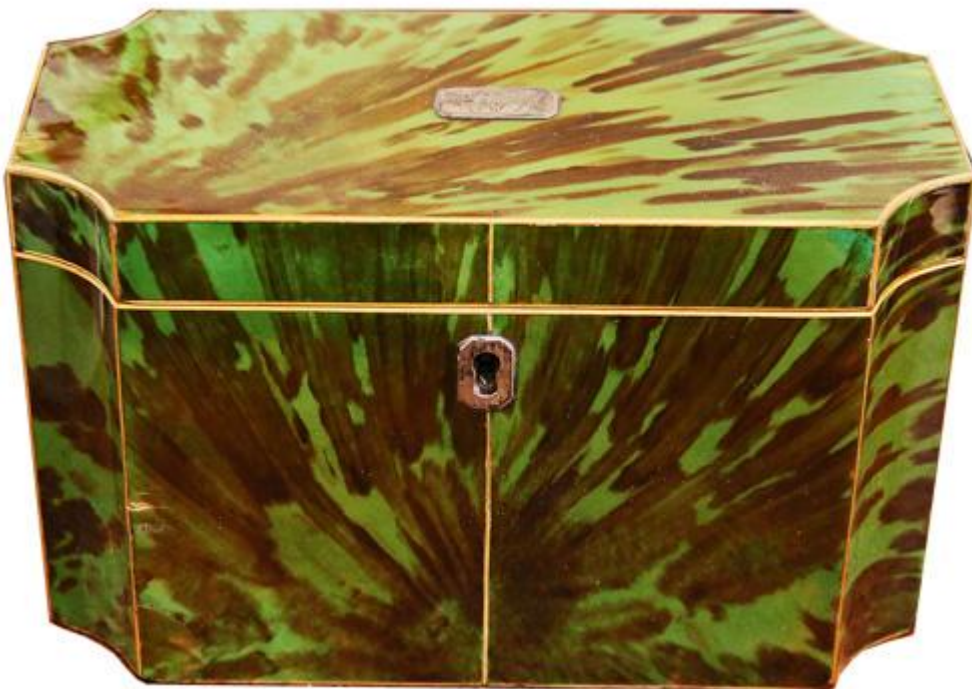
Italy 4456 M00059

**An Unusual Square 19th Century English Red Tortoiseshell Tea Caddy** with bone stringing, a sterling silver pull, and exotic

wood herringbone parquetry inlay embellishing the top and sides

Height: 37"; Width: 55 1/4"; Depth: 27 1/2"

---



Italy 4456 M00059

**An 18th Century English Green Tortoiseshell Double Tea**



C. MARIANI ANTIQUES  
RESTORATION & CUSTOM

---

1301 Harrison Street San Francisco CA 94103  
www.cmarianiantiques.com

Contact: Claudio Mariani  
claudio@cmarianiantiques.com  
Tel 415.541.7868 ~ Fax 415.487.3950

**Caddy** with cut corners and inlaid fruitwood piping, silver escutcheon and monogrammed cartouche and matching interior lids

Height: 37"; Width: 55 1/4"; Depth: 27 1/2"

---



# C. MARIANI ANTIQUES RESTORATION & CUSTOM

1301 Harrison Street San Francisco CA 94103  
www.cmarianiantiques.com

Contact: Claudio Mariani  
claudio@cmarianiantiques.com  
Tel 415.541.7868 ~ Fax 415.487.3950





C. MARIANI ANTIQUES  
RESTORATION & CUSTOM

---

1301 Harrison Street San Francisco CA 94103  
www.cmarianiantiques.com

Contact: Claudio Mariani  
claudio@cmarianiantiques.com  
Tel 415.541.7868 ~ Fax 415.487.3950

Italy 4456 M00059

**An Early 19th Century Continental Ebony and Bone-Inlaid Red Tortoiseshell Tea Caddy**, of rectangular form with geometric mosaic bone inlay on the sides and top, the top centered with a sterling silver pull and accented with a sterling cartouche engraved "Green," with matching interior lid

Height: 37"; Width: 55 1/4"; Depth: 27 1/2"

---





Italy 4456 M00059

**Early 19th Century Chinese Black Lacquer Tea Caddy,**  
rectangular in shape with paneled sides and decorated in gold  
and red enameling

Height: 37"; Width: 55 1/4"; Depth: 27 1/2"



Italy 4456 M00059

**A Late 18th-Early 19th Century English Bone-Inlaid Tortoiseshell Tea Caddy** octagonal in shape with silver finial, escutcheon and pique framed oval cartouche

Height: 37"; Width: 55 1/4"; Depth: 27 1/2"

---



Italy 4456 M00059

**An 18th Century Italian Walnut Fireplace Mantel** with a  
hand carved center shell motif

Height: 37"; Width: 55 1/4"; Depth: 27 1/2"



Italy 4456 M00059

**A 19th Century English Anglo-Indian Bone Miniature Desk**  
the slant front over a single drawer with original fitted interior

Height: 37"; Width: 55 1/4"; Depth: 27 1/2"

---



Italy 4456 M00059

**A Pair of 18th Century Italian Walnut Bible Boxes, each**



# C. MARIANI ANTIQUES RESTORATION & CUSTOM

---

1301 Harrison Street San Francisco CA 94103  
www.cmarianiantiques.com

Contact: Claudio Mariani  
claudio@cmarianiantiques.com  
Tel 415.541.7868 ~ Fax 415.487.3950

with an unusually low profile, carved with a relating diamond pattern and raised on stylized animal paw feet

Height: 37"; Width: 55 1/4"; Depth: 27 1/2"

---



C. MARIANI ANTIQUES  
RESTORATION & CUSTOM

1301 Harrison Street San Francisco CA 94103  
www.cmarianiantiques.com

Contact: Claudio Mariani  
claudio@cmarianiantiques.com  
Tel 415.541.7868 ~ Fax 415.487.3950



Italy 4456 M00059

**A Charming 19th Century French Country Repoussé and Polychrome Tin Multipurpose Decor/Fireplace Screen, in**



C. MARIANI ANTIQUES  
RESTORATION & CUSTOM

---

1301 Harrison Street San Francisco CA 94103  
www.cmarianiantiques.com

Contact: Claudio Mariani  
claudio@cmarianiantiques.com  
Tel 415.541.7868 ~ Fax 415.487.3950

the shape of a woven basket and “blooming” with abundant white hydrangeas

Height: 37"; Width: 55 1/4"; Depth: 27 1/2"

---





# C. MARIANI ANTIQUES RESTORATION & CUSTOM

1301 Harrison Street San Francisco CA 94103  
www.cmarianiantiques.com

Contact: Claudio Mariani  
claudio@cmarianiantiques.com  
Tel 415.541.7868 ~ Fax 415.487.3950



Italy 4456 M00059

**An 18th Century Italian Polychrome and Parcel-Gilt  
Tabernacle Box**, crested with a neoclassical pediment, raised on  
flattened bun feet, embellished with faux marble, intricate  
stellate carvings and retaining its original key and lock with the  
door opening to reveal a storage/display area

Height: 37"; Width: 55 1/4"; Depth: 27 1/2"

---



# C. MARIANI ANTIQUES RESTORATION & CUSTOM

1301 Harrison Street San Francisco CA 94103  
www.cmarianiantiques.com

Contact: Claudio Mariani  
claudio@cmarianiantiques.com  
Tel 415.541.7868 ~ Fax 415.487.3950



Italy 4456 M00059

**A 19th Century French Boullework Key Box**, the ebonized and brass case centered by an inlaid brass red tortoiseshell and

brass door, a keyed lock, the reverse fitted with wall mounts for hanging and the interior fitted with hooks for sets of keys

Height: 37"; Width: 55 1/4"; Depth: 27 1/2"



Italy 4456 M00059



C. MARIANI ANTIQUES  
RESTORATION & CUSTOM

---

1301 Harrison Street San Francisco CA 94103  
www.cmarianiantiques.com

Contact: Claudio Mariani  
claudio@cmarianiantiques.com  
Tel 415.541.7868 ~ Fax 415.487.3950

**A Massive 16th Century Tuscan Oak Bible Box**, perfect for modern storage needs, with a guilloché motif encircling the box and the whole raised on prototypical Baroque lions' paw feet. Provenance: from the 19th c. Arezzo gallery of Pietro Bruschi, stamped on the interior lid, later (1920) amongst the household furnishings of Castiglioni Fibbochi, and most likely a late 20th c. deaccessioned piece from Casa Museo Ivan Bruschi

Height: 37"; Width: 55 1/4"; Depth: 27 1/2"

---



# C. MARIANI ANTIQUES RESTORATION & CUSTOM

1301 Harrison Street San Francisco CA 94103  
www.cmarianiantiques.com

Contact: Claudio Mariani  
claudio@cmarianiantiques.com  
Tel 415.541.7868 ~ Fax 415.487.3950





C. MARIANI ANTIQUES  
RESTORATION & CUSTOM

---

1301 Harrison Street San Francisco CA 94103  
www.cmarianiantiques.com

Contact: Claudio Mariani  
claudio@cmarianiantiques.com  
Tel 415.541.7868 ~ Fax 415.487.3950

Italy 4456 M00059

**A Rare and Unusually Large 18th Century Deep Green Tortoiseshell English Tea Caddy**, raised on silvered ball feet and accented with pewter stringing and silvered bale handle and escutcheon, with two interior matching compartments retaining some of the original lead lining, one for green tea and one for black

Height: 37"; Width: 55 1/4"; Depth: 27 1/2"

---



Italy 4456 M00059

**A Pair of Palazzo Scaled 19th Century Solid Brass Andirons**  
in an exaggerated baluster form





C. MARIANI ANTIQUES  
RESTORATION & CUSTOM

---

1301 Harrison Street San Francisco CA 94103  
www.cmarianiantiques.com

Contact: Claudio Mariani  
claudio@cmarianiantiques.com  
Tel 415.541.7868 ~ Fax 415.487.3950

Height: 37"; Width: 55 1/4"; Depth: 27 1/2"