



Continental 3326 M00061

**A Set of Four Continental Watercolors**, one depicting a landscape, a castle fortress, a country cottage, and the last a still life of flowers, all by artist Julius Delbos

Versailles: 24"H x 30"W; Building: 27"H x 36"W; Tree: 25"H x 21"W; Floral painting: 21"H



Continental 3326 M00061

**A 19th Century French Oil on Canvas** depicting a herd of cattle in a provincial market town



# C. MARIANI ANTIQUES RESTORATION & CUSTOM

1301 Harrison Street San Francisco CA 94103  
[www.cmarianiantiques.com](http://www.cmarianiantiques.com)

Contact: Claudio Mariani  
[claudio@cmarianiantiques.com](mailto:claudio@cmarianiantiques.com)  
Tel 415.541.7868 ~ Fax 415.487.3950

Versailles: 24"H x 30"W; Building: 27"H x 36"W; Tree: 25"H x 21"W; Floral painting: 21"H





C. MARIANI ANTIQUES  
RESTORATION & CUSTOM

---

1301 Harrison Street San Francisco CA 94103  
www.cmarianiantiques.com

Contact: Claudio Mariani  
claudio@cmarianiantiques.com  
Tel 415.541.7868 ~ Fax 415.487.3950

Continental 3326 M00061

***The Cardinal After His Meal, A Colorful 19th Century Oil by Albert-Joseph Penot (1862-1930).*** The signed painting depicts a cardinal in traditional vibrant vestments, standing in an interior setting beside a dinner table heaped with fruit, cakes, and wine. The piece is highly reminiscent of Penot's *A Reclining Cardinal* sold at Sotheby's London on May 13, 1998, lot 389.

Versailles: 24"H x 30"W; Building: 27"H x 36"W; Tree: 25"H x 21"W; Floral painting: 21"H

---





C. MARIANI ANTIQUES  
RESTORATION & CUSTOM

1301 Harrison Street San Francisco CA 94103  
www.cmarianiantiques.com

Contact: Claudio Mariani  
claudio@cmarianiantiques.com  
Tel 415.541.7868 ~ Fax 415.487.3950



Continental 3326 M00061

**A 19th Century Oil on Canvas Floral Still Life** painting,  
unsigned

Versailles: 24"H x 30"W; Building: 27"H x 36"W; Tree: 25"H x 21"W; Floral painting: 21"H

---



Continental 3326 M00061

**A 19th Century Italian Oil on Canvas** of a young woman, carrying fresh cut wood from the forest surrounding her cottage

Versailles: 24"H x 30"W; Building: 27"H x 36"W; Tree: 25"H x 21"W; Floral painting: 21"H



Continental 3326 M00061



C. MARIANI ANTIQUES  
RESTORATION & CUSTOM

---

1301 Harrison Street San Francisco CA 94103  
www.cmarianiantiques.com

Contact: Claudio Mariani  
claudio@cmarianiantiques.com  
Tel 415.541.7868 ~ Fax 415.487.3950

**A Mid 19th Century Belgian Oil on Panel by Eugene Joseph Verboeckhoven, 1798-1881**, world renowned as the premier painter of sheep, this painting entitled Return of the Flock, Verboeckven's other works in the collections of many world museums, including The Hermitage Museum, St. Petersburg, The Wallace Collection, London, as well as museums in the United States

Versailles: 24"H x 30"W; Building: 27"H x 36"W; Tree: 25"H x 21"W; Floral painting: 21"H

---





Continental 3326 M00061

**A Pair of 19th Century Dutch Oil on Canvas Winterscapes  
signed by Danish Artist Nils Hans Christiansen**



## C. MARIANI ANTIQUES RESTORATION & CUSTOM

---

1301 Harrison Street San Francisco CA 94103  
www.cmarianiantiques.com

Contact: Claudio Mariani  
claudio@cmarianiantiques.com  
Tel 415.541.7868 ~ Fax 415.487.3950

**(1850-1922)**, one entitled Midwinter in Ribe and the other Windmill on the Lake, Aarhus, both in their original carved giltwood frames. Available as a pair or individually.

Versailles: 24"H x 30"W; Building: 27"H x 36"W; Tree: 25"H x 21"W; Floral painting: 21"H

---



Continental 3326 M00061

**A Pair of Whimsical Oil on Canvas Paintings of Playful Putti, in a woodland setting**





## C. MARIANI ANTIQUES RESTORATION & CUSTOM

---

1301 Harrison Street San Francisco CA 94103  
www.cmarianiantiques.com

Contact: Claudio Mariani  
claudio@cmarianiantiques.com  
Tel 415.541.7868 ~ Fax 415.487.3950

Versailles: 24"H x 30"W; Building: 27"H x 36"W; Tree: 25"H x 21"W; Floral painting: 21"H

---



Continental 3326 M00061

**The 19th Century Oil on Panel, The Italian Boy by Hubert**





C. MARIANI ANTIQUES  
RESTORATION & CUSTOM

---

1301 Harrison Street San Francisco CA 94103  
www.cmarianiantiques.com

Contact: Claudio Mariani  
claudio@cmarianiantiques.com  
Tel 415.541.7868 ~ Fax 415.487.3950

**von Herkomer**, the German born British Social Realist Painter who studied at Southampton School of Art, the Munich Academy and the South Kensington Art School. Although von Herkomer received large sums of money for his portraits, he continued to produce social realist paintings like this one and Pressing to the West (1884), Hard Times (1885) and On Strike (1891). Von Herkomer was knighted in 1907 and died in 1914. His work is represented in the National Portrait Gallery in London.

Versailles: 24"H x 30"W; Building: 27"H x 36"W; Tree: 25"H x 21"W; Floral painting: 21"H

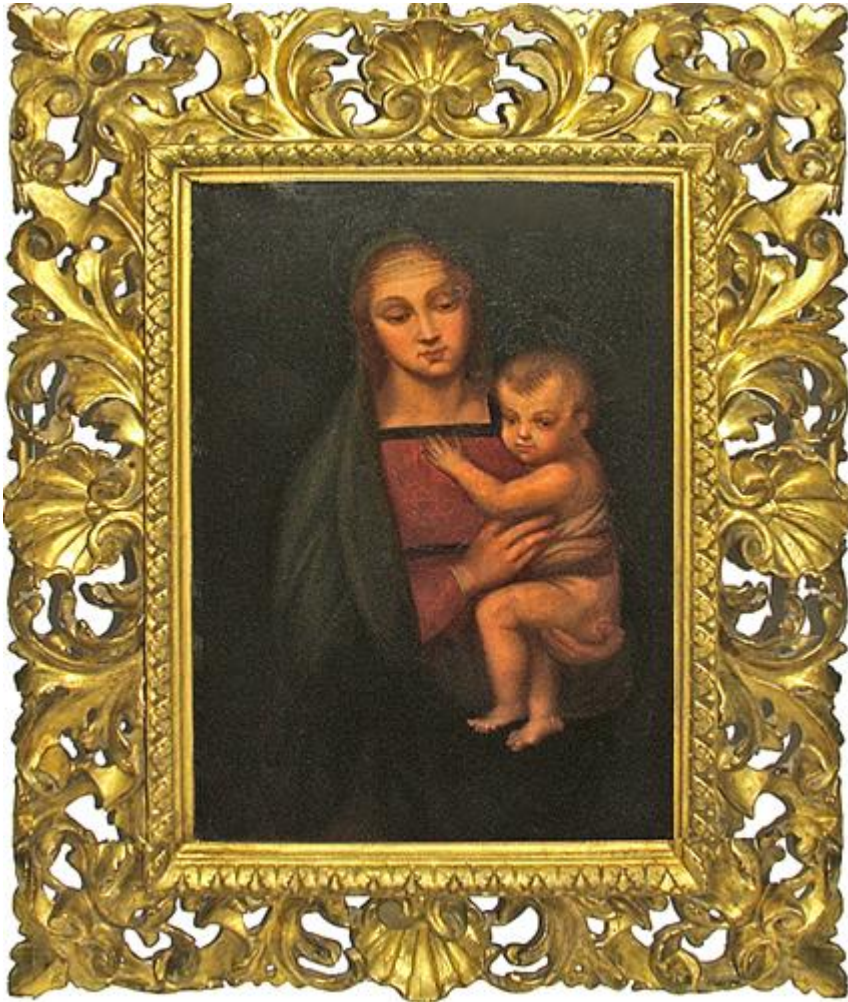
---



C. MARIANI ANTIQUES  
RESTORATION & CUSTOM

1301 Harrison Street San Francisco CA 94103  
www.cmarianiantiques.com

Contact: Claudio Mariani  
claudio@cmarianiantiques.com  
Tel 415.541.7868 ~ Fax 415.487.3950



Continental 3326 M00061

**A Remarkable Unsigned 18th Century Granduca Madonna**  
oil on canvas, by a follower of Raphael, demonstrating the



## C. MARIANI ANTIQUES RESTORATION & CUSTOM

---

1301 Harrison Street San Francisco CA 94103  
[www.cmarianiantiques.com](http://www.cmarianiantiques.com)

Contact: Claudio Mariani  
[claudio@cmarianiantiques.com](mailto:claudio@cmarianiantiques.com)  
Tel 415.541.7868 ~ Fax 415.487.3950

influence of Leonardo da Vinci, as does the original Cinquecento oil on panel (now in the Galleria Palatina, Palazzo Pitti, Florence), as the Virgin and Child emerge from a dark background, the whole presented in a carved and fretted giltwood frame.

Provenance: Herbert G. Ebeling Gallery

Versailles: 24"H x 30"W; Building: 27"H x 36"W; Tree: 25"H x 21"W; Floral painting: 21"H

---



C. MARIANI ANTIQUES  
RESTORATION & CUSTOM

1301 Harrison Street San Francisco CA 94103  
www.cmarianiantiques.com

Contact: Claudio Mariani  
claudio@cmarianiantiques.com  
Tel 415.541.7868 ~ Fax 415.487.3950



Continental 3326 M00061

**A 19th Century Armorial Crest Painting on Panel** in an unusual lozenge shape



Versailles: 24"H x 30"W; Building: 27"H x 36"W; Tree: 25"H x 21"W; Floral painting: 21"H

---



Continental 3326 M00061



C. MARIANI ANTIQUES  
RESTORATION & CUSTOM

---

1301 Harrison Street San Francisco CA 94103  
www.cmarianiantiques.com

Contact: Claudio Mariani  
claudio@cmarianiantiques.com  
Tel 415.541.7868 ~ Fax 415.487.3950

**A 19th Century Oil on Canvas entitled The Egg, signed and dated 1873 by Carl J. Suhrlandt (b. 1828 - d. 1919), the Bavarian painter who studied under Ary Scheffer in Paris and then became known for his commissioned works of dogs and cats belonging to the English, French, Danish and Russian aristocracy**

Versailles: 24"H x 30"W; Building: 27"H x 36"W; Tree: 25"H x 21"W; Floral painting: 21"H

---



C. MARIANI ANTIQUES  
RESTORATION & CUSTOM

1301 Harrison Street San Francisco CA 94103  
www.cmarianiantiques.com

Contact: Claudio Mariani  
claudio@cmarianiantiques.com  
Tel 415.541.7868 ~ Fax 415.487.3950



Continental 3326 M00061

**Louis Eugene Lambert's signed 1873 Oil on Panel**, entitled "Young Braves", depicting four pups fascinated by an old hat that one is in the process of eating; Provenance: Bonhams

Knightsbridge, Jan. 24, 1996

Versailles: 24"H x 30"W; Building: 27"H x 36"W; Tree: 25"H x 21"W; Floral painting: 21"H

---



Continental 3326 M00061

**An Original Oil on Canvas Painting of the Grand Canal in**



## **Venice**, signed M. Garni

Versailles: 24"H x 30"W; Building: 27"H x 36"W; Tree: 25"H x 21"W; Floral painting: 21"H

---





C. MARIANI ANTIQUES  
RESTORATION & CUSTOM

---

1301 Harrison Street San Francisco CA 94103  
www.cmarianiantiques.com

Contact: Claudio Mariani  
claudio@cmarianiantiques.com  
Tel 415.541.7868 ~ Fax 415.487.3950

Continental 3326 M00061

### **A Pair of 18th Century Italian Oil on Canvas Paintings**

mounted in their original giltwood frames, the scenes and style from the circle of Claude Joseph Vernet, born in France but prolific in port maritime scenes during his years in Italy, these depicting ships in a harbor guarded by stone fortresses giltwood frames

Versailles: 24"H x 30"W; Building: 27"H x 36"W; Tree: 25"H x 21"W; Floral painting: 21"H

---



Continental 3326 M00061

**A 19th Century American Maritime Painting** of two merchant vessels in stormy seas, signed RH Hayes and dated 1874.

Versailles: 24"H x 30"W; Building: 27"H x 36"W; Tree: 25"H x



21"W; Floral painting: 21"H

---



Continental 3326 M00061

**The 18th Century Winter Landscape entitled Paysage  
D'Hiver from the Circle of Old Master painter Francesco**



**Foschi (1710-1780),** most likely of a cottage in Verona

Versailles: 24"H x 30"W; Building: 27"H x 36"W; Tree: 25"H x 21"W; Floral painting: 21"H

---



Continental 3326 M00061

**A Serene Oil on Canvas of Venice,** signed N. Brigante,

depicting 18th c. merchant ships and commerce along the Grand Canal with the Campanile and Doges Palace in the background

Versailles: 24"H x 30"W; Building: 27"H x 36"W; Tree: 25"H x 21"W; Floral painting: 21"H





C. MARIANI ANTIQUES  
RESTORATION & CUSTOM

---

1301 Harrison Street San Francisco CA 94103  
www.cmarianiantiques.com

Contact: Claudio Mariani  
claudio@cmarianiantiques.com  
Tel 415.541.7868 ~ Fax 415.487.3950

Continental 3326 M00061

**A 19th Century Italian Oil on Canvas** entitled "The Village House"

Versailles: 24"H x 30"W; Building: 27"H x 36"W; Tree: 25"H x 21"W; Floral painting: 21"H

---



Continental 3326 M00061

**A 19th Century Italian Oil on Canvas, "Peasants with Horses on Village Road" by Emil Barbarini (b. 1855**





C. MARIANI ANTIQUES  
RESTORATION & CUSTOM

1301 Harrison Street San Francisco CA 94103  
www.cmarianiantiques.com

Contact: Claudio Mariani  
claudio@cmarianiantiques.com  
Tel 415.541.7868 ~ Fax 415.487.3950

## Vienna-d. 1930 Vienna)

Versailles: 24"H x 30"W; Building: 27"H x 36"W; Tree: 25"H x 21"W; Floral painting: 21"H





C. MARIANI ANTIQUES  
RESTORATION & CUSTOM

---

1301 Harrison Street San Francisco CA 94103  
www.cmarianiantiques.com

Contact: Claudio Mariani  
claudio@cmarianiantiques.com  
Tel 415.541.7868 ~ Fax 415.487.3950

Continental 3326 M00061

**A Splendid 17th Century Italian Oil on Canvas of Susannah and the Elders, after Guido Reni's Original in the The National Gallery (London)**, believed to be by Francesco Furini, also called the Guido of Florence for his successful imitations of Guido Reni's works, this painting depicting the story from the Book of Daniel of the virtuous bather startled by spying elders, the piece demonstrating masterful brushstrokes, a brilliant and true color palate, and exceptional seicento morbidezza technique

Versailles: 24"H x 30"W; Building: 27"H x 36"W; Tree: 25"H x 21"W; Floral painting: 21"H

---



Continental 3326 M00061

**A 17th Century Oil on Canvas entitled “Contemplative Gentlemen,” attributed to Italianate Flemish painter Theodor Rombouts (Antwerp 1597-1637), depicting three thoughtful aristocrats relaxing in a Dutch tavern over their tankards of ale and clay tavern pipes**

Versailles: 24"H x 30"W; Building: 27"H x 36"W; Tree: 25"H x 21"W; Floral painting: 21"H

---



Continental 3326 M00061





C. MARIANI ANTIQUES  
RESTORATION & CUSTOM

---

1301 Harrison Street San Francisco CA 94103  
[www.cmarianiantiques.com](http://www.cmarianiantiques.com)

Contact: Claudio Mariani  
[claudio@cmarianiantiques.com](mailto:claudio@cmarianiantiques.com)  
Tel 415.541.7868 ~ Fax 415.487.3950

**Eight 18th Century Viennese Colour Etchings of French Castles and Palaces along the Rhine in outline by Johann Ziegler (b.1750 - d. 1812) and coloured by Lorenz Janscha (b. 1746 - d. 1812) in giltwood frames**

Versailles: 24"H x 30"W; Building: 27"H x 36"W; Tree: 25"H x 21"W; Floral painting: 21"H

---



Continental 3326 M00061

**A Pair of Fine 17th Century Calcite Chalk and Graphite Sketches** by Pierre Parrocel (b Avignon, 16 March 1670; d

Avignon, 26 Aug 1739) of putti on beige parchment

Versailles: 24"H x 30"W; Building: 27"H x 36"W; Tree: 25"H x 21"W; Floral painting: 21"H

---





C. MARIANI ANTIQUES  
RESTORATION & CUSTOM

1301 Harrison Street San Francisco CA 94103  
www.cmarianiantiques.com

Contact: Claudio Mariani  
claudio@cmarianiantiques.com  
Tel 415.541.7868 ~ Fax 415.487.3950

Continental 3326 M00061

**A Pair of 18th Century Polychrome Sopraporta** framed wood panels depicting victory attributes of garlands, swords, arrows and trumpets

Versailles: 24"H x 30"W; Building: 27"H x 36"W; Tree: 25"H x 21"W; Floral painting: 21"H





Continental 3326 M00061

**A 19th Century Italian Oil on Canvas, “Dante Sketching La Pia”**, depicting the subject from Canto V of The Divine Comedy, where Dante meets the spirit of a lady of Siena who was imprisoned by her loveless older husband, Nello della Pietra, in a Maremma fortress on the Tuscan coast, and eventually died from his neglect . The open prayer book signifies her name, translated



## C. MARIANI ANTIQUES RESTORATION & CUSTOM

---

1301 Harrison Street San Francisco CA 94103  
www.cmarianiantiques.com

Contact: Claudio Mariani  
claudio@cmarianiantiques.com  
Tel 415.541.7868 ~ Fax 415.487.3950

as “The Pious.” Here, the husband sits sternly while La Pia (allegorical for Dante’s muse Beatrice Portinari, the object of his lifetime secret and courtly love and devotion-he called her “the queen of virtue and salvation”. He met Beatrice at the age of 9 (she was 8), but never spoke to her again...she married her real life husband, Simon de’ Bardi, and died at 24, as did La Pia ) is sketched by Dante disguised as a nobleman

Versailles: 24”H x 30”W; Building: 27”H x 36”W; Tree: 25”H x 21”W; Floral painting: 21”H

---



C. MARIANI ANTIQUES  
RESTORATION & CUSTOM

1301 Harrison Street San Francisco CA 94103  
www.cmarianiantiques.com

Contact: Claudio Mariani  
claudio@cmarianiantiques.com  
Tel 415.541.7868 ~ Fax 415.487.3950



Continental 3326 M00061

**A Haunting and Rare Pair of 17th Century Neoclassical Oil  
on Canvas En Camaieu Panels, one panel portraying a**



## C. MARIANI ANTIQUES RESTORATION & CUSTOM

---

1301 Harrison Street San Francisco CA 94103  
[www.cmarianiantiques.com](http://www.cmarianiantiques.com)

Contact: Claudio Mariani  
[claudio@cmarianiantiques.com](mailto:claudio@cmarianiantiques.com)  
Tel 415.541.7868 ~ Fax 415.487.3950

classical sculpture of an imprisoned hero (most likely Herakles) guarded over by a vicious hound and the other depicting the escape in which he slays the hound with his bare hands, both panels in their original wood and gesso carved gilt frames

Versailles: 24"H x 30"W; Building: 27"H x 36"W; Tree: 25"H x 21"W; Floral painting: 21"H

---





C. MARIANI ANTIQUES  
RESTORATION & CUSTOM

1301 Harrison Street San Francisco CA 94103  
www.cmarianiantiques.com

Contact: Claudio Mariani  
claudio@cmarianiantiques.com  
Tel 415.541.7868 ~ Fax 415.487.3950



Continental 3326 M00061

**The Magnificent 18th Century Oil on Canvas, “The Nurturing Mother,”** portraying a serene figure nursing her



## C. MARIANI ANTIQUES RESTORATION & CUSTOM

---

1301 Harrison Street San Francisco CA 94103  
[www.cmarianiantiques.com](http://www.cmarianiantiques.com)

Contact: Claudio Mariani  
[claudio@cmarianiantiques.com](mailto:claudio@cmarianiantiques.com)  
Tel 415.541.7868 ~ Fax 415.487.3950

infant and offering a pomegranite to another of her hungry children, all displaying a masterful and luxurious brush stroke in the depiction of the subjects, fabrics and details

Versailles: 24"H x 30"W; Building: 27"H x 36"W; Tree: 25"H x 21"W; Floral painting: 21"H

---



# C. MARIANI ANTIQUES RESTORATION & CUSTOM

1301 Harrison Street San Francisco CA 94103  
[www.cmarianiantiques.com](http://www.cmarianiantiques.com)

Contact: Claudio Mariani  
[claudio@cmarianiantiques.com](mailto:claudio@cmarianiantiques.com)  
Tel 415.541.7868 ~ Fax 415.487.3950



Continental 3326 M00061

**“Mother and Two Children”**, oil on canvas, signed and dated by John Alfred Vinter (1828-1905), English portrait, genre, literary

and historical painter and portrait lithographer to Queen Victoria

Versailles: 24"H x 30"W; Building: 27"H x 36"W; Tree: 25"H x 21"W; Floral painting: 21"H

---



Continental 3326 M00061





C. MARIANI ANTIQUES  
RESTORATION & CUSTOM

---

1301 Harrison Street San Francisco CA 94103  
www.cmarianiantiques.com

Contact: Claudio Mariani  
claudio@cmarianiantiques.com  
Tel 415.541.7868 ~ Fax 415.487.3950

**Benjamin William Leader's 19th Century (1831-1923)**  
**Bucolic Landscape "Fishing by the Stream"**, evidencing his trademark style of softly handled paint surfaces, minute tree details, and placement of diminutive figures against vast landscapes, oil on canvas with original mounting; Leader's works are part of numerous museum collections, including the Tate Gallery, London

Versailles: 24"H x 30"W; Building: 27"H x 36"W; Tree: 25"H x 21"W; Floral painting: 21"H

---



Continental 3326 M00061

**A 19th Century English Oil Painting** depicting a noble woman  
mounted in a carved giltwood frame

Versailles: 24"H x 30"W; Building: 27"H x 36"W; Tree: 25"H x 21"W; Floral painting: 21"H

---



Continental 3326 M00061

**An 18th Century Continental Oil Painting** depicting a still-life of two urns with flowers mounted in a carved giltwood frame



## C. MARIANI ANTIQUES RESTORATION & CUSTOM

---

1301 Harrison Street San Francisco CA 94103  
[www.cmarianiantiques.com](http://www.cmarianiantiques.com)

Contact: Claudio Mariani  
[claudio@cmarianiantiques.com](mailto:claudio@cmarianiantiques.com)  
Tel 415.541.7868 ~ Fax 415.487.3950

Versailles: 24"H x 30"W; Building: 27"H x 36"W; Tree: 25"H x 21"W; Floral painting: 21"H