



Czech 4966 C0056

A Pair of 20th Century Bronze Sculptures from Jaroslav Vacek
(1923-2012)- Titled "Family"



C. MARIANI ANTIQUES RESTORATION & CUSTOM

1301 Harrison Street San Francisco CA 94103
www.cmarianiantiques.com

Contact: Claudio Mariani
claudio@cmarianiantiques.com
Tel 415.541.7868 ~ Fax 415.487.3950

Priced individually.

Sculpture: 16" W x 10 1/2"H x 10" D- Approx. Base: 42 1/2"H x
14" x 14"



Czech 4966 C0056

A Pair of 20th Century Bronze Sculptures from Jaroslav Vacek
(1923-2012)- Titled "Family"



C. MARIANI ANTIQUES RESTORATION & CUSTOM

1301 Harrison Street San Francisco CA 94103
www.cmarianiantiques.com

Contact: Claudio Mariani
claudio@cmarianiantiques.com
Tel 415.541.7868 ~ Fax 415.487.3950

Priced individually.

Sculpture: 16" W x 10 1/2"H x 10" D- Approx. Base: 42 1/2"H x
14" x 14"

 C. MARIANI ANTIQUES
RESTORATION & CUSTOM

1301 Harrison Street San Francisco CA 94103
www.cmarianiantiques.com

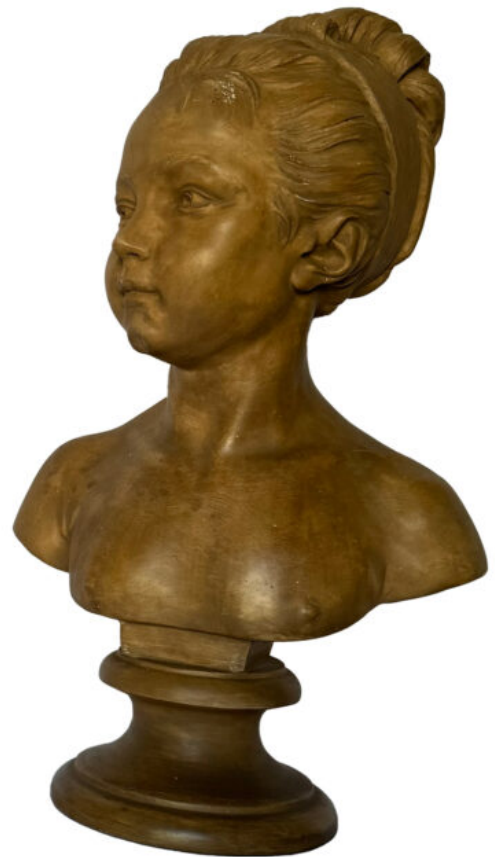
Contact: Claudio Mariani
claudio@cmarianiantiques.com
Tel 415.541.7868 ~ Fax 415.487.3950



Czech 4966 C0056

Pair of 18th Century Blanc de Chine Parrots.

Sculpture: 16" W x 10 1/2"H x 10" D- Approx. Base: 42 1/2"H x
14" x 14"



Czech 4966 C0056

A set of 19th Century Italian Terracota busts of young boy and



C. MARIANI ANTIQUES
RESTORATION & CUSTOM

1301 Harrison Street San Francisco CA 94103
www.cmarianiantiques.com

Contact: Claudio Mariani
claudio@cmarianiantiques.com
Tel 415.541.7868 ~ Fax 415.487.3950

young girl - (Priced individually)

Sculpture: 16" W x 10 1/2"H x 10" D- Approx. Base: 42 1/2"H x
14" x 14"



C. MARIANI ANTIQUES RESTORATION & CUSTOM

1301 Harrison Street San Francisco CA 94103
www.cmarianiantiques.com

Contact: Claudio Mariani
claudio@cmarianiantiques.com
Tel 415.541.7868 ~ Fax 415.487.3950





C. MARIANI ANTIQUES
RESTORATION & CUSTOM

1301 Harrison Street San Francisco CA 94103
www.cmariantiques.com

Contact: Claudio Mariani
claudio@cmariantiques.com
Tel 415.541.7868 ~ Fax 415.487.3950

Czech 4966 C0056

Jade Horse from Qing Dynasty Republic Period, with ebonized base.

Sculpture: 16" W x 10 1/2"H x 10" D- Approx. Base: 42 1/2"H x 14" x 14"



C. MARIANI ANTIQUES RESTORATION & CUSTOM

1301 Harrison Street San Francisco CA 94103
www.cmarianiantiques.com

Contact: Claudio Mariani
claudio@cmarianiantiques.com
Tel 415.541.7868 ~ Fax 415.487.3950



Czech 4966 C0056

A late 18th Century combined Marble bust of Caesar, resting on a marble base.

Sculpture: 16" W x 10 1/2"H x 10" D- Approx. Base: 42 1/2"H x 14" x 14"

 C. MARIANI ANTIQUES
RESTORATION & CUSTOM

1301 Harrison Street San Francisco CA 94103
www.cmarianiantiques.com

Contact: Claudio Mariani
claudio@cmarianiantiques.com
Tel 415.541.7868 ~ Fax 415.487.3950



Czech 4966 C0056

A Very Fine Carved Marble Bust of Emperor Adrian,
possibly 18th Century.

Sculpture: 16" W x 10 1/2"H x 10" D- Approx. Base: 42 1/2"H x
14" x 14"



C. MARIANI ANTIQUES RESTORATION & CUSTOM

1301 Harrison Street San Francisco CA 94103
www.cmarianiantiques.com

Contact: Claudio Mariani
claudio@cmarianiantiques.com
Tel 415.541.7868 ~ Fax 415.487.3950



Czech 4966 C0056

A 17th Century Asian Buddha Statue, resting on a metal
plinth

Sculpture: 16" W x 10 1/2"H x 10" D- Approx. Base: 42 1/2"H x
14" x 14"



C. MARIANI ANTIQUES RESTORATION & CUSTOM

1301 Harrison Street San Francisco CA 94103
www.cmarianiantiques.com

Contact: Claudio Mariani
claudio@cmarianiantiques.com
Tel 415.541.7868 ~ Fax 415.487.3950



Czech 4966 C0056

A Neoclassical 19th Century Bronze Sculpture depicting a whimsical scene of two lovers with three playful children, set into a later wooden base

Sculpture: 16" W x 10 1/2"H x 10" D- Approx. Base: 42 1/2"H x 14" x 14"

 C. MARIANI ANTIQUES
RESTORATION & CUSTOM

1301 Harrison Street San Francisco CA 94103
www.cmarianiantiques.com

Contact: Claudio Mariani
claudio@cmarianiantiques.com
Tel 415.541.7868 ~ Fax 415.487.3950





C. MARIANI ANTIQUES
RESTORATION & CUSTOM

1301 Harrison Street San Francisco CA 94103
www.cmarianiantiques.com

Contact: Claudio Mariani
claudio@cmarianiantiques.com
Tel 415.541.7868 ~ Fax 415.487.3950

Czech 4966 C0056

A Rare 19th Century Painted French Chateau Greeter, with his left hand extended toasting with a chalice and dressed in period attire raised on a round plinth

Sculpture: 16" W x 10 1/2"H x 10" D- Approx. Base: 42 1/2"H x 14" x 14"



C. MARIANI ANTIQUES RESTORATION & CUSTOM

1301 Harrison Street San Francisco CA 94103
www.cmarianiantiques.com

Contact: Claudio Mariani
claudio@cmarianiantiques.com
Tel 415.541.7868 ~ Fax 415.487.3950



Czech 4966 C0056

A Pair of 19th Century Italian Marble Urns accented with

gadrooning and raised above waisted socles terminating in square plinth bases

Sculpture: 16" W x 10 1/2"H x 10" D- Approx. Base: 42 1/2"H x 14" x 14"



C. MARIANI ANTIQUES RESTORATION & CUSTOM

1301 Harrison Street San Francisco CA 94103
www.cmarianiantiques.com

Contact: Claudio Mariani
claudio@cmarianiantiques.com
Tel 415.541.7868 ~ Fax 415.487.3950





C. MARIANI ANTIQUES
RESTORATION & CUSTOM

1301 Harrison Street San Francisco CA 94103
www.cmarianiantiques.com

Contact: Claudio Mariani
claudio@cmarianiantiques.com
Tel 415.541.7868 ~ Fax 415.487.3950

Czech 4966 C0056

A 19th Century Gilt-Brass Eagle Repoussé, originally part of a weather vane and now presented on a custom mahogany stand

Sculpture: 16" W x 10 1/2"H x 10" D- Approx. Base: 42 1/2"H x 14" x 14"



C. MARIANI ANTIQUES RESTORATION & CUSTOM

1301 Harrison Street San Francisco CA 94103
www.cmarianiantiques.com

Contact: Claudio Mariani
claudio@cmarianiantiques.com
Tel 415.541.7868 ~ Fax 415.487.3950





C. MARIANI ANTIQUES
RESTORATION & CUSTOM

1301 Harrison Street San Francisco CA 94103
www.cmarianiantiques.com

Contact: Claudio Mariani
claudio@cmarianiantiques.com
Tel 415.541.7868 ~ Fax 415.487.3950

Czech 4966 C0056

A Decorative 20th Century Italian Verdigris Bust of a Roman Male, raised on a square plinth base

Sculpture: 16" W x 10 1/2"H x 10" D- Approx. Base: 42 1/2"H x 14" x 14"



C. MARIANI ANTIQUES RESTORATION & CUSTOM

1301 Harrison Street San Francisco CA 94103
www.cmarianiantiques.com

Contact: Claudio Mariani
claudio@cmarianiantiques.com
Tel 415.541.7868 ~ Fax 415.487.3950



Czech 4966 C0056

A 19th Century Chinese Bone Statue of Goddess Kwan Yin and an Infant, Kwan Yin or Guan Yin ('One Who Perceives the Sounds of the World') is the Buddhist Goddess of compassion, unconditional love, mercy and fertility and known amongst Eastern cultures for choosing to put off enlightenment and stay on the earth to teach and help others achieve their own enlightenment, often she is depicted in a white robe, here she stands with a child representing maternal instincts and fertility, and above a lotus flower, symbolizing purity of the mind and spirit, the whole above a later wood base

Sculpture: 16" W x 10 1/2"H x 10" D- Approx. Base: 42 1/2"H x 14" x 14"



C. MARIANI ANTIQUES RESTORATION & CUSTOM

1301 Harrison Street San Francisco CA 94103
www.cmarianiantiques.com

Contact: Claudio Mariani
claudio@cmarianiantiques.com
Tel 415.541.7868 ~ Fax 415.487.3950



Czech 4966 C0056

An 18th Century Italian Neoclassical Bronze Figure of a Muse, in a contrapposto pose and raised on an oval base; Cf, The 3rd c. BC Greek original and later 2nd c. Roman copy (Hellenistic-Antonine) of The Muse of History, Klio, currently in the Walters Museum, Baltimore. In Greek myth and culture, the Muses were honored as beautiful goddesses who brought inspiration to artists. In the Hellenistic period, the Muses were widely depicted. Here, the sensuality of the maiden's form, her pose, and the elaborately draped clothing are distinctly Hellenistic

Sculpture: 16" W x 10 1/2"H x 10" D- Approx. Base: 42 1/2"H x 14" x 14"

 C. MARIANI ANTIQUES
RESTORATION & CUSTOM

1301 Harrison Street San Francisco CA 94103
www.cmarianiantiques.com

Contact: Claudio Mariani
claudio@cmarianiantiques.com
Tel 415.541.7868 ~ Fax 415.487.3950



Czech 4966 C0056

A Rare and Important Set of Monumental 18th Century Neoclassical Statues of The Four Seasons, rendered in Pietra De Vicentina Stone, based on the Greek mythological goddesses collectively known as "Horae," and comprised of Elar (Spring), Theros (Summer), Phthinoporon (Autumn) and Chelmon (Winter), with Winter depicted draped in a billowing shawl to protect against the cold and elements and carrying acorns that are gathered in November (European nations regard November as the start of the winter season), Spring holding a garland of flower blossoms, Summer holding sheaves of wheat and surrounded by wheat at the base of her legs, and Fall depicted with the bountiful fruits of the season cascading out of a cornucopia, and with each statue presented on later vintage plinth bases

Sculpture: 16" W x 10 1/2"H x 10" D- Approx. Base: 42 1/2"H x 14" x 14"



C. MARIANI ANTIQUES RESTORATION & CUSTOM

1301 Harrison Street San Francisco CA 94103
www.cmarianiantiques.com

Contact: Claudio Mariani
claudio@cmarianiantiques.com
Tel 415.541.7868 ~ Fax 415.487.3950



Czech 4966 C0056

A 19th Century Italian Pewter Sculpture of a Putti, in a playful pose, now mounted on a later faux marble presentation base

Sculpture: 16" W x 10 1/2"H x 10" D- Approx. Base: 42 1/2"H x 14" x 14"



Czech 4966 C0056

A Pair of 18th Century Italian Carved Polychrome Putti,



C. MARIANI ANTIQUES
RESTORATION & CUSTOM

1301 Harrison Street San Francisco CA 94103
www.cmarianiantiques.com

Contact: Claudio Mariani
claudio@cmarianiantiques.com
Tel 415.541.7868 ~ Fax 415.487.3950

each kneeling and with a torch in hand, now atop a faux marble polychrome base

Sculpture: 16" W x 10 1/2"H x 10" D- Approx. Base: 42 1/2"H x 14" x 14"



Czech 4966 C0056

A 19th Century Italian Porcelain Centerpiece comprised of a fretted fruit bowl raised on three standing putti carrying grapes,



C. MARIANI ANTIQUES
RESTORATION & CUSTOM

1301 Harrison Street San Francisco CA 94103
www.cmarianiantiques.com

Contact: Claudio Mariani
claudio@cmarianiantiques.com
Tel 415.541.7868 ~ Fax 415.487.3950

wheat, a bird and fruit, all raised on an elaborate blue, white and gold base

Sculpture: 16" W x 10 1/2"H x 10" D- Approx. Base: 42 1/2"H x 14" x 14"



C. MARIANI ANTIQUES RESTORATION & CUSTOM

1301 Harrison Street San Francisco CA 94103
www.cmarianiantiques.com

Contact: Claudio Mariani
claudio@cmarianiantiques.com
Tel 415.541.7868 ~ Fax 415.487.3950



Czech 4966 C0056

A 19th Century Chinese Polychrome and Wooden Carved Wu Lou or Hulu Gourd, a symbol of longevity, happiness, luck and health, the Wu Lou is a gourd fruit, once the fruit was removed and the gourd dried, it was used to store water or medicines to assist people in their journeys, it is thought to represent a giver of life and remover of negative energy or chi, the shape of the Wu Lou symbolizes the earth (bottom half) and heavens (top half) coming together

Sculpture: 16" W x 10 1/2"H x 10" D- Approx. Base: 42 1/2"H x 14" x 14"



C. MARIANI ANTIQUES
RESTORATION & CUSTOM

1301 Harrison Street San Francisco CA 94103
www.cmarianiantiques.com

Contact: Claudio Mariani
claudio@cmarianiantiques.com
Tel 415.541.7868 ~ Fax 415.487.3950



Czech 4966 C0056

An Ancient Egyptian Polychrome on Wood Burial Mask,
with parts of the original finish intact, and with no alterations or

restorations, dating to the reign of the last Pharaoh of the 18th Dynasty, Horemheb (1320-1292 BC), who initially served under Amenhotep III and continued service under Akhenaten; he first came to the notice of historians during the reign of Tutankhamun when he acted in the capacity of advisor to the young king along with the vizier Ay. Accompanied by provenance information and presented on a custom pedestal

Sculpture: 16" W x 10 1/2"H x 10" D- Approx. Base: 42 1/2"H x 14" x 14"



Czech 4966 C0056

A 18th Century Italian Ebonized Walnut Statue of a Putti
now atop a removable and later base, with losses

 C. MARIANI ANTIQUES
RESTORATION & CUSTOM

1301 Harrison Street San Francisco CA 94103
www.cmarianiantiques.com

Contact: Claudio Mariani
claudio@cmarianiantiques.com
Tel 415.541.7868 ~ Fax 415.487.3950

Sculpture: 16" W x 10 1/2"H x 10" D- Approx. Base: 42 1/2"H x
14" x 14"



Czech 4966 C0056

A Pair of Highly Unusual 18th Century French Tin and Parcel-Gilt Flame Finials, each raised on stepped circular giltwood plinths and depicting the flames emanating from cannonball-shaped metal orbs

Sculpture: 16" W x 10 1/2"H x 10" D- Approx. Base: 42 1/2"H x 14" x 14"



Czech 4966 C0056

A 17th Century Italian Parcel-Gilt and Polychrome Alto Relievo Wall Appliqué with scrolling rocaille elements at the corners and centered with a single flower in full bloom, surrounded by stylized foliate designs and exhibiting its superb original patinated finish

Sculpture: 16" W x 10 1/2"H x 10" D- Approx. Base: 42 1/2"H x 14" x 14"



C. MARIANI ANTIQUES RESTORATION & CUSTOM

1301 Harrison Street San Francisco CA 94103
www.cmarianiantiques.com

Contact: Claudio Mariani
claudio@cmarianiantiques.com
Tel 415.541.7868 ~ Fax 415.487.3950



Czech 4966 C0056

A 19th Century Italian Cast Bronze Sculpture of a Putti,
originally playing a musical instrument (not lost) and sitting atop
a later white Carrara marble base

Sculpture: 16" W x 10 1/2"H x 10" D- Approx. Base: 42 1/2"H x
14" x 14"



C. MARIANI ANTIQUES RESTORATION & CUSTOM

1301 Harrison Street San Francisco CA 94103
www.cmarianiantiques.com

Contact: Claudio Mariani
claudio@cmarianiantiques.com
Tel 415.541.7868 ~ Fax 415.487.3950





C. MARIANI ANTIQUES
RESTORATION & CUSTOM

1301 Harrison Street San Francisco CA 94103
www.cmarianiantiques.com

Contact: Claudio Mariani
claudio@cmarianiantiques.com
Tel 415.541.7868 ~ Fax 415.487.3950

Czech 4966 C0056

A 19th Century Italian Terracotta Bust of a Woman of Means, with draped dress and elaborately sculpted flowers in her hair, the whole raised atop a marble plinth

Sculpture: 16" W x 10 1/2"H x 10" D- Approx. Base: 42 1/2"H x 14" x 14"



Czech 4966 C0056

An 18th Century Russian or Roman Giltwood Architectural Element of the two-headed eagle representing either the

Russian Imperial Czars, this one from the reign of Peter the Great (1682-1725), or the Holy Roman Empire which also claimed the ancient Roman symbol as it's own

Sculpture: 16" W x 10 1/2"H x 10" D- Approx. Base: 42 1/2"H x 14" x 14"



C. MARIANI ANTIQUES
RESTORATION & CUSTOM

1301 Harrison Street San Francisco CA 94103
www.cmarianiantiques.com

Contact: Claudio Mariani
claudio@cmarianiantiques.com
Tel 415.541.7868 ~ Fax 415.487.3950



Czech 4966 C0056

An Italian 18th Century Polychrome Statue of a Saint,
standing in simple draped and flowing garb

 C. MARIANI ANTIQUES
RESTORATION & CUSTOM

1301 Harrison Street San Francisco CA 94103
www.cmarianiantiques.com

Contact: Claudio Mariani
claudio@cmarianiantiques.com
Tel 415.541.7868 ~ Fax 415.487.3950

Sculpture: 16" W x 10 1/2"H x 10" D- Approx. Base: 42 1/2"H x
14" x 14"



Czech 4966 C0056

A 17th Century Giltwood and Polychrome Burmese Statue of a Monk, holding an alms bowl and standing barefoot atop a lotus representing enlightenment, the whole raised on a later custom ebonized base. The practice of collecting alms was to provide people the opportunity to show generosity; by giving alms, one gets closer to reaching nirvana. Statues of Burmese monks were used as decoration in monasteries as a source of inspiration for young monks

Provenance: from the Estate of Kenneth Smiser, San Francisco

Sculpture: 16" W x 10 1/2"H x 10" D- Approx. Base: 42 1/2"H x 14" x 14"



Czech 4966 C0056

A Pair of Elaborate 19th Century Dutch Patinated Brass Ecclesiastical Candle Screens made in Baroque manner,



1301 Harrison Street San Francisco CA 94103
www.cmarianiantiques.com

Contact: Claudio Mariani
claudio@cmarianiantiques.com
Tel 415.541.7868 ~ Fax 415.487.3950

featuring a large sunflower and leaves, and resting on a
pyramidal faux marble base

Sculpture: 16" W x 10 1/2"H x 10" D- Approx. Base: 42 1/2"H x
14" x 14"



Czech 4966 C0056

A 19th Century Italian Marble Sculpture of a neoclassically dressed mother enjoying time with her two playful children

 C. MARIANI ANTIQUES
RESTORATION & CUSTOM

1301 Harrison Street San Francisco CA 94103
www.cmarianiantiques.com

Contact: Claudio Mariani
claudio@cmarianiantiques.com
Tel 415.541.7868 ~ Fax 415.487.3950

Sculpture: 16" W x 10 1/2"H x 10" D- Approx. Base: 42 1/2"H x
14" x 14"





C. MARIANI ANTIQUES
RESTORATION & CUSTOM

1301 Harrison Street San Francisco CA 94103
www.cmarianiantiques.com

Contact: Claudio Mariani
claudio@cmarianiantiques.com
Tel 415.541.7868 ~ Fax 415.487.3950

Czech 4966 C0056

A Pair of 19th Century African Ebony Busts depicting a man and a woman, each on a later base

Sculpture: 16" W x 10 1/2"H x 10" D- Approx. Base: 42 1/2"H x 14" x 14"