



C. MARIANI ANTIQUES
RESTORATION & CUSTOM

1301 Harrison Street San Francisco CA 94103
www.cmarianiantiques.com

Contact: Claudio Mariani
claudio@cmarianiantiques.com
Tel 415.541.7868 ~ Fax 415.487.3950



England 01909 M00041

A 19th Century English Tortoiseshell Tea Caddy in a Rare



C. MARIANI ANTIQUES
RESTORATION & CUSTOM

1301 Harrison Street San Francisco CA 94103
www.cmarianiantiques.com

Contact: Claudio Mariani
claudio@cmarianiantiques.com
Tel 415.541.7868 ~ Fax 415.487.3950

Form, the pagoda top above a serpentine form with a lidded interior raised on wooden ball feet, the whole with bone and silver detailing

Height 5 1/2"; Width 8 3/4"; Depth 4 1/2"



England 01909 M00041

A 19th Century French Boullework Lap Desk, the top with marquetry inlaid brass and red tortoiseshell, opening to reveal a later red leather embossed writing surface and various compartments for writing utensils and inks

Height 5 1/2"; Width 8 3/4"; Depth 4 1/2"



England 01909 M00041

A 19th Century English Blonde Tortoiseshell Tea Caddy,



C. MARIANI ANTIQUES RESTORATION & CUSTOM

1301 Harrison Street San Francisco CA 94103
www.cmarianiantiques.com

Contact: Claudio Mariani
claudio@cmarianiantiques.com
Tel 415.541.7868 ~ Fax 415.487.3950

the top centered by a sterling silver rectangular medallion, the whole embellished with pewter stringing, and opening to reveal a sugar bowl between two lidded compartments, one for green tea and one for black, the whole raised on bun feet

Height 5 1/2"; Width 8 3/4"; Depth 4 1/2"



England 01909 M00041

A 19th Century Japanese Tortoiseshell Box, the top featuring a gold polychromed crane (a symbol of luck, happiness and longevity) flying over paddy fields, the whole accented with gold foliate motifs, the top opening to reveal four tortoiseshell boxes, each decorated with motifs representing a different type of tea or

herb

Height 5 1/2"; Width 8 3/4"; Depth 4 1/2"





C. MARIANI ANTIQUES
RESTORATION & CUSTOM

1301 Harrison Street San Francisco CA 94103
www.cmarianiantiques.com

Contact: Claudio Mariani
claudio@cmarianiantiques.com
Tel 415.541.7868 ~ Fax 415.487.3950

England 01909 M00041

A 19th Century English Tortoiseshell Jewel Box, accented with etched silver mountings and two lion heads and metal rings on either side, the domed top with an engraved silver cartouche, and the whole raised on stylized animal paw feet

Height 5 1/2"; Width 8 3/4"; Depth 4 1/2"



England 01909 M00041

A 19th Century English Blonde Tortoiseshell Box, the top centered by a sterling silver rectangular engraved medallion, the whole embellished with pewter stringing to create a patchwork quilt on the top, opening to a velvet lined interior, and raised on silvered bun feet



C. MARIANI ANTIQUES RESTORATION & CUSTOM

1301 Harrison Street San Francisco CA 94103
www.cmarianiantiques.com

Contact: Claudio Mariani
claudio@cmarianiantiques.com
Tel 415.541.7868 ~ Fax 415.487.3950

Height 5 1/2"; Width 8 3/4"; Depth 4 1/2"



England 01909 M00041



C. MARIANI ANTIQUES
RESTORATION & CUSTOM

1301 Harrison Street San Francisco CA 94103
www.cmarianiantiques.com

Contact: Claudio Mariani
claudio@cmarianiantiques.com
Tel 415.541.7868 ~ Fax 415.487.3950

A 19th Century English Blonde Tortoiseshell Box, the top centered by a sterling silver rectangular medallion, crisscrossed with pewter stringing, and opening to a royal purple velvet lined interior, the whole raised on silvered lion paw feet

Height 5 1/2"; Width 8 3/4"; Depth 4 1/2"



England 01909 M00041

A 19th Century English Regency Blonde Tortoiseshell Box,
the gently sloping top embellished with pewter stringing and
centered by a sterling silver rectangular medallion, the top
opening to reveal a striking red lined interior and a removable

tray with fitted and lined compartments, with the whole raised on
rocaille brass feet; original key is included

Height 5 1/2"; Width 8 3/4"; Depth 4 1/2"



England 01909 M00041

**A Fine 19th Century French Première-Partie Boulle
Marquetry Jewel Box**, imported, sold by and stamped Asprey



C. MARIANI ANTIQUES
RESTORATION & CUSTOM

1301 Harrison Street San Francisco CA 94103
www.cmarianiantiques.com

Contact: Claudio Mariani
claudio@cmarianiantiques.com
Tel 415.541.7868 ~ Fax 415.487.3950

London, with red tortoiseshell ground inlaid with brass rocaille veneers

Height 5 1/2"; Width 8 3/4"; Depth 4 1/2"



England 01909 M00041



C. MARIANI ANTIQUES
RESTORATION & CUSTOM

1301 Harrison Street San Francisco CA 94103
www.cmarianiantiques.com

Contact: Claudio Mariani
claudio@cmarianiantiques.com
Tel 415.541.7868 ~ Fax 415.487.3950

A 19th Century Diminutive Tortoiseshell Tea Caddy, the domed top embellished with pewter stringing and centered by a sterling silver medallion at the top above a rectangular form with a sterling escutcheon, and opening to reveal two lidded interior compartments with the whole all raised on silvered ball feet

Height 5 1/2"; Width 8 3/4"; Depth 4 1/2"



England 01909 M00041

**An 1810 French Tortoiseshell Table Snuff Box with 18k
Rose Gold Hinge and Mounts,** accented with an exquisitely

hand painted miniature portraiture on porcelain of a beauty, the portrait protected by a crystal cover; the box itself is solid shell, thick and in perfect condition. This piece is pristine, with no warping, damage or restorations

Height 5 1/2"; Width 8 3/4"; Depth 4 1/2"



England 01909 M00041

A Mid 19th Century Silver Pique Inlaid Tortoiseshell Coin Purse, with accordion style pockets; the piece is in perfect original condition

Height 5 1/2"; Width 8 3/4"; Depth 4 1/2"



England 01909 M00041

A Late 19th Century English Lund Tortoiseshell Box with
fitted interior with bone trim

Height 5 1/2"; Width 8 3/4"; Depth 4 1/2"



England 01909 M00041

A 19th Century Palmwood Snuff Box with tortoiseshell interior

Height 5 1/2"; Width 8 3/4"; Depth 4 1/2"



England 01909 M00041

An Early 19th Century George III Pagoda-Top Pressed Tortoiseshell Double Tea Caddy, with architectural pressed panels and flute pressed canted corners, inlaid silver piping,



C. MARIANI ANTIQUES
RESTORATION & CUSTOM

1301 Harrison Street San Francisco CA 94103
www.cmarianiantiques.com

Contact: Claudio Mariani
claudio@cmarianiantiques.com
Tel 415.541.7868 ~ Fax 415.487.3950

escutcheon and cartouche titled, "Jane Thomas"

Height 5 1/2"; Width 8 3/4"; Depth 4 1/2"



C. MARIANI ANTIQUES RESTORATION & CUSTOM

1301 Harrison Street San Francisco CA 94103
www.cmarianiantiques.com

Contact: Claudio Mariani
claudio@cmarianiantiques.com
Tel 415.541.7868 ~ Fax 415.487.3950





C. MARIANI ANTIQUES
RESTORATION & CUSTOM

1301 Harrison Street San Francisco CA 94103
www.cmarianiantiques.com

Contact: Claudio Mariani
claudio@cmarianiantiques.com
Tel 415.541.7868 ~ Fax 415.487.3950

England 01909 M00041

An Early 19th Century Continental Ebony and Bone-Inlaid Red Tortoiseshell Tea Caddy, of rectangular form with geometric mosaic bone inlay on the sides and top, the top centered with a sterling silver pull and accented with a sterling cartouche engraved "Green," with matching interior lid

Height 5 1/2"; Width 8 3/4"; Depth 4 1/2"



C. MARIANI ANTIQUES
RESTORATION & CUSTOM

1301 Harrison Street San Francisco CA 94103
www.cmarianiantiques.com

Contact: Claudio Mariani
claudio@cmarianiantiques.com
Tel 415.541.7868 ~ Fax 415.487.3950



England 01909 M00041

**An Unusual Square 19th Century English Red Tortoiseshell
Tea Caddy** with bone stringing, a sterling silver pull, and exotic

wood herringbone parquetry inlay embellishing the top and sides

Height 5 1/2"; Width 8 3/4"; Depth 4 1/2"



England 01909 M00041

An 18th Century English Green Tortoiseshell Double Tea



C. MARIANI ANTIQUES
RESTORATION & CUSTOM

1301 Harrison Street San Francisco CA 94103
www.cmarianiantiques.com

Contact: Claudio Mariani
claudio@cmarianiantiques.com
Tel 415.541.7868 ~ Fax 415.487.3950

Caddy with cut corners and inlaid fruitwood piping, silver escutcheon and monogrammed cartouche and matching interior lids

Height 5 1/2"; Width 8 3/4"; Depth 4 1/2"



England 01909 M00041

**A Late 18th-Early 19th Century English Bone-Inlaid
Tortoiseshell Tea Caddy** octagonal in shape with silver finial,
escutcheon and pique framed oval cartouche

Height 5 1/2"; Width 8 3/4"; Depth 4 1/2"





C. MARIANI ANTIQUES
RESTORATION & CUSTOM

1301 Harrison Street San Francisco CA 94103
www.cmarianiantiques.com

Contact: Claudio Mariani
claudio@cmarianiantiques.com
Tel 415.541.7868 ~ Fax 415.487.3950

England 01909 M00041

An English Regency 19th Century Tortoiseshell, Bone, Mother-of-Pearl, Abalone, and 925 Sterling Silver Sewing Box, complete with a mirrored interior lid along with the original sewing accoutrements including awls, thread, thimbles, seam rippers, spools, original pearl, brass, abalone and semi-precious stone buttons, a bodkin, a sterling tape measure with silk tape, and charming mementos including a tiny silver metal candlestick and slipper, cufflinks and other personal treasures belonging to the original owner

Height 5 1/2"; Width 8 3/4"; Depth 4 1/2"



C. MARIANI ANTIQUES
RESTORATION & CUSTOM

1301 Harrison Street San Francisco CA 94103
www.cmarianiantiques.com

Contact: Claudio Mariani
claudio@cmarianiantiques.com
Tel 415.541.7868 ~ Fax 415.487.3950



England 01909 M00041

A 19th Century French Boullework Key Box, the ebonized and brass case centered by an inlaid brass red tortoiseshell and



C. MARIANI ANTIQUES RESTORATION & CUSTOM

1301 Harrison Street San Francisco CA 94103
www.cmarianiantiques.com

Contact: Claudio Mariani
claudio@cmarianiantiques.com
Tel 415.541.7868 ~ Fax 415.487.3950

brass door, a keyed lock, the reverse fitted with wall mounts for hanging and the interior fitted with hooks for sets of keys

Height 5 1/2"; Width 8 3/4"; Depth 4 1/2"



C. MARIANI ANTIQUES RESTORATION & CUSTOM

1301 Harrison Street San Francisco CA 94103
www.cmarianiantiques.com

Contact: Claudio Mariani
claudio@cmarianiantiques.com
Tel 415.541.7868 ~ Fax 415.487.3950





C. MARIANI ANTIQUES
RESTORATION & CUSTOM

1301 Harrison Street San Francisco CA 94103
www.cmarianiantiques.com

Contact: Claudio Mariani
claudio@cmarianiantiques.com
Tel 415.541.7868 ~ Fax 415.487.3950

England 01909 M00041

A Rare and Unusually Large 18th Century Deep Green Tortoiseshell English Tea Caddy, raised on silvered ball feet and accented with pewter stringing and silvered bale handle and escutcheon, with two interior matching compartments retaining some of the original lead lining, one for green tea and one for black

Height 5 1/2"; Width 8 3/4"; Depth 4 1/2"



C. MARIANI ANTIQUES
RESTORATION & CUSTOM

1301 Harrison Street San Francisco CA 94103
www.cmarianiantiques.com

Contact: Claudio Mariani
claudio@cmarianiantiques.com
Tel 415.541.7868 ~ Fax 415.487.3950



England 01909 M00041

**An Unusually Shaped 19th Century English Regency
Tortoiseshell Tea Caddy** with bone accents, the whole raised
on silvered ball feet

Height 5 1/2"; Width 8 3/4"; Depth 4 1/2"



C. MARIANI ANTIQUES RESTORATION & CUSTOM

1301 Harrison Street San Francisco CA 94103
www.cmarianiantiques.com

Contact: Claudio Mariani
claudio@cmarianiantiques.com
Tel 415.541.7868 ~ Fax 415.487.3950



England 01909 M00041



C. MARIANI ANTIQUES
RESTORATION & CUSTOM

1301 Harrison Street San Francisco CA 94103
www.cmarianiantiques.com

Contact: Claudio Mariani
claudio@cmarianiantiques.com
Tel 415.541.7868 ~ Fax 415.487.3950

A 19th Century Tortoiseshell Tea Caddy with flared skirt a pagoda lid with original lock and key, raised on bone flattened bun feet.

Height 5 1/2"; Width 8 3/4"; Depth 4 1/2"



England 01909 M00041

A 19th Century English Tortoiseshell Tea Caddy, with flared skirt and pagoda lid, embellished with pewter stringing and bone, sterling escutcheon and plaque, and raised on flattened bun feet



C. MARIANI ANTIQUES RESTORATION & CUSTOM

1301 Harrison Street San Francisco CA 94103
www.cmarianiantiques.com

Contact: Claudio Mariani
claudio@cmarianiantiques.com
Tel 415.541.7868 ~ Fax 415.487.3950

Height 5 1/2"; Width 8 3/4"; Depth 4 1/2"



England 01909 M00041



C. MARIANI ANTIQUES
RESTORATION & CUSTOM

1301 Harrison Street San Francisco CA 94103
www.cmarianiantiques.com

Contact: Claudio Mariani
claudio@cmarianiantiques.com
Tel 415.541.7868 ~ Fax 415.487.3950

A 19th Century Tortoiseshell Tea Caddy with a pagoda lid decorated with an inlay of mother-of-pearl in a floral pattern, raised on silver ball feet

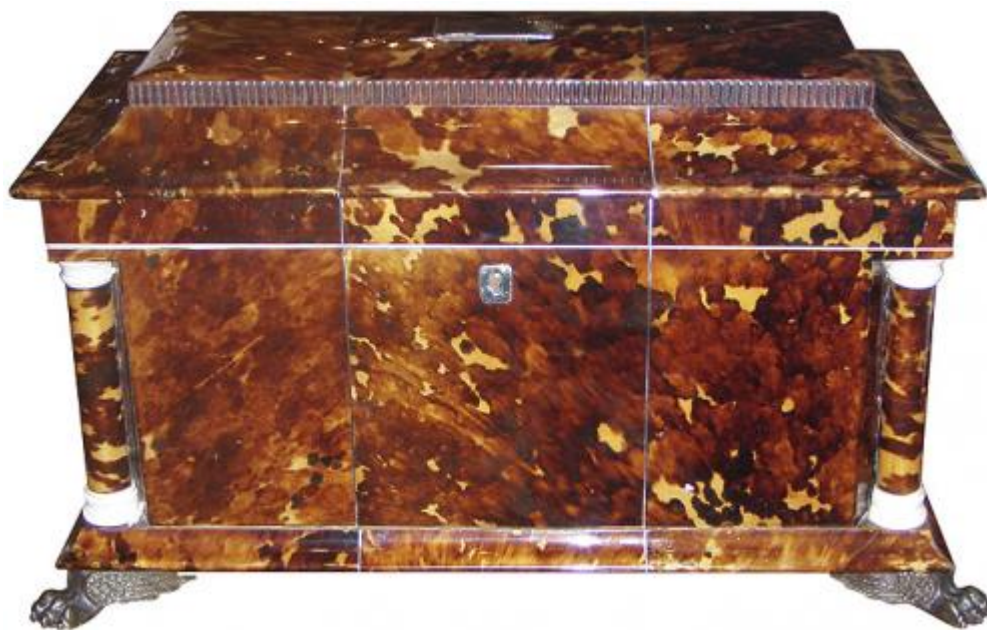
Height 5 1/2"; Width 8 3/4"; Depth 4 1/2"



England 01909 M00041

A Mid 19th Century French Boullework Box with red tortoiseshell and fretted brass and in exceptional condition

Height 5 1/2"; Width 8 3/4"; Depth 4 1/2"



England 01909 M00041

An Unusually Large and Rare English Regency

Tortoiseshell Tea Caddy, in the Neoclassical taste, the pagoda cover above a rectangular form, fitted with two compartments, the whole raised on brass lion's paw feet

Height 5 1/2"; Width 8 3/4"; Depth 4 1/2"



England 01909 M00041

A 19th Century Dutch Translucent Tortoiseshell and Sterling Silver

Valuables Box, the top centered by an ornate cartouche medallion with conforming mounts on the lid and sides of the scalloped box

Height 5 1/2"; Width 8 3/4"; Depth 4 1/2"



England 01909 M00041

Anglo Indian Bone, Ebony, and Tortoiseshell Box

Height 5 1/2"; Width 8 3/4"; Depth 4 1/2"



England 01909 M00041



C. MARIANI ANTIQUES
RESTORATION & CUSTOM

1301 Harrison Street San Francisco CA 94103
www.cmarianiantiques.com

Contact: Claudio Mariani
claudio@cmarianiantiques.com
Tel 415.541.7868 ~ Fax 415.487.3950

An Unusually Diminutive Tortoiseshell and Sterling Silver Table Box accented with a silver eagle motif on the top along with garlanded banding and an elaborate conforming silver escutcheon, the top opening to reveal a small silver locket for a memento or small treasured item, and with all raised on flattened bun feet

Height 5 1/2"; Width 8 3/4"; Depth 4 1/2"



C. MARIANI ANTIQUES
RESTORATION & CUSTOM

1301 Harrison Street San Francisco CA 94103
www.cmarianiantiques.com

Contact: Claudio Mariani
claudio@cmarianiantiques.com
Tel 415.541.7868 ~ Fax 415.487.3950



England 01909 M00041

A 19th Century English Tortoiseshell Tea Caddy with
pagoda lid, silver escutcheon, pewter stringing and bone accents,
all raised on flattened bun feet

Height 5 1/2"; Width 8 3/4"; Depth 4 1/2"