



Sweden 3428 M00573

An 18th Century Swedish Mahogany and Parcel Gilt Mirror
crested with a neoclassical urn flanked by garlands and eagles,



C. MARIANI ANTIQUES
RESTORATION & CUSTOM

1301 Harrison Street San Francisco CA 94103
www.cmarianiantiques.com

Contact: Claudio Mariani
claudio@cmarianiantiques.com
Tel 415.541.7868 ~ Fax 415.487.3950

above the original mirror plate framed with Corinthian columns
and accented with gilt florets

Height: 51"; Width: 31"

 C. MARIANI ANTIQUES
RESTORATION & CUSTOM

1301 Harrison Street San Francisco CA 94103
www.cmarianiantiques.com

Contact: Claudio Mariani
claudio@cmarianiantiques.com
Tel 415.541.7868 ~ Fax 415.487.3950



Sweden 3428 M00573

A Pair of 18th Century Italian Giltwood Mirrors, the original mercury plates mounted in frames crested with gryphons flanked by trailing garlands at the corners and with a foliate swags centering the base rail

Height: 51"; Width: 31"



Sweden 3428 M00573

An 18th Century Italian Rococo Giltwood Pier Mirror,
crested with acanthus leaves and flowers above vining and

rocaille motifs

Height: 51"; Width: 31"



Sweden 3428 M00573

An Elegant 18th Century Italian Luccan Carved Giltwood Mirror, with intricate floral and foliate motifs and surmounted by a floral spray and retaining its original mercury glass plate

Height: 51"; Width: 31"



Sweden 3428 M00573

An 18th Century Italian Transitional Rococo Giltwood Mirror retaining multiple original mercury glass plates and

embellished with C and S-scrolls along with rocaille motifs

Height: 51"; Width: 31"



Sweden 3428 M00573

A Pair of 18th Century Giltwood Florentine Mirrors, with two candle arms emanating from the base, and the frames embellished with high rococo carved acanthus leaf motifs

Height: 51"; Width: 31"



Sweden 3428 M00573

A Pair of 19th Century Bra de Lumiere Rococo Giltwood Mirrors, elaborate rocaille cartouche frames surrounding original mirror plates and issuing two candle arms at the base

Height: 51"; Width: 31"

 **C. MARIANI ANTIQUES**
RESTORATION & CUSTOM

1301 Harrison Street San Francisco CA 94103
www.cmarianiantiques.com

Contact: Claudio Mariani
claudio@cmarianiantiques.com
Tel 415.541.7868 ~ Fax 415.487.3950



Sweden 3428 M00573

A French 18th Century Louis XVI Giltwood Neoclassical

Mirror, carved with trailing husks, crested with a trophy centered by a pair of kissing doves and retaining its original mercury plates

Height: 51"; Width: 31"



Sweden 3428 M00573

A Late 18th Century Italian Neoclassical Giltwood Over door/Over Mantle Mirror crested with a floral and foliate motif



C. MARIANI ANTIQUES
RESTORATION & CUSTOM

1301 Harrison Street San Francisco CA 94103
www.cmarianiantiques.com

Contact: Claudio Mariani
claudio@cmarianiantiques.com
Tel 415.541.7868 ~ Fax 415.487.3950

and flanked by pot de feu urns with cascading swags above a beaded and roped edge above lobed lower corners

Height: 51"; Width: 31"



C. MARIANI ANTIQUES RESTORATION & CUSTOM

1301 Harrison Street San Francisco CA 94103
www.cmarianiantiques.com

Contact: Claudio Mariani
claudio@cmarianiantiques.com
Tel 415.541.7868 ~ Fax 415.487.3950



Sweden 3428 M00573

A Late 18th Century Rococo Giltwood Console and Mirror Set, both elaborately carved with thick fruited vining and with the console top inset with verde issori marble and raised on a stepped and shaped base

Height: 51"; Width: 31"

 C. MARIANI ANTIQUES
RESTORATION & CUSTOM

1301 Harrison Street San Francisco CA 94103
www.cmarianiantiques.com

Contact: Claudio Mariani
claudio@cmarianiantiques.com
Tel 415.541.7868 ~ Fax 415.487.3950



Sweden 3428 M00573

**A Pair of Late 18th Century Italian Louis XVI Giltwood
Mirrors** retaining their original mercury plates and crested with
ribband bows and intricate acanthus detailing with the leaves on
one side matching the reverse detailing on the other, the whole
surrounded by a guilloche border above neoclassical pier “feet”
Height: 51"; Width: 31"



Sweden 3428 M00573

A Late 18th Century Italian Neoclassical Giltwood Mirror
crested by an eagle with a trailing husk garland in its beak



C. MARIANI ANTIQUES RESTORATION & CUSTOM

1301 Harrison Street San Francisco CA 94103
www.cmarianiantiques.com

Contact: Claudio Mariani
claudio@cmarianiantiques.com
Tel 415.541.7868 ~ Fax 415.487.3950

flanked by urn finials above a guilloche motif, Grecian profiles,
scrolling acanthus leaves, and Greek key pattern accents

Height: 51"; Width: 31"



Sweden 3428 M00573

An 18th Century Rococo Giltwood Mirror, crested with a vase filled with flowers and holding suspended garlands



C. MARIANI ANTIQUES RESTORATION & CUSTOM

1301 Harrison Street San Francisco CA 94103
www.cmarianiantiques.com

Contact: Claudio Mariani
claudio@cmarianiantiques.com
Tel 415.541.7868 ~ Fax 415.487.3950

cascading down the sides and raised on shaped piers centered
with a stylized acanthus spray

Height: 51"; Width: 31"



C. MARIANI ANTIQUES RESTORATION & CUSTOM

1301 Harrison Street San Francisco CA 94103
www.cmarianiantiques.com

Contact: Claudio Mariani
claudio@cmarianiantiques.com
Tel 415.541.7868 ~ Fax 415.487.3950



Sweden 3428 M00573

A Pair of Rococo Venetian Giltwood Mirrors, each comprised of a main mirror below an accent mirror in the cresting and creating dramatic lighting with a pair of scarlet Murano glass candleholders at the base

Height: 51"; Width: 31"



Sweden 3428 M00573

**A 19th Century Italian Meuble de Style Rococo Giltwood
Mirror** with shaped looking glass with fretted and stylized

acanthus, floral and rocaille frame

Height: 51"; Width: 31"



Sweden 3428 M00573

A 17th Century Italian Ebonized Mirror Inlaid with Bone
stringing and arabesques along with crimson and azure
cabochons surrounding a later beveled mirror plate with a stellate
etched motif

Height: 51"; Width: 31"



Sweden 3428 M00573

An 18th Century French Louis XV Style Silver Gilt Trumeau Mirror with a painted panel of a landscape setting above a



C. MARIANI ANTIQUES RESTORATION & CUSTOM

1301 Harrison Street San Francisco CA 94103
www.cmarianiantiques.com

Contact: Claudio Mariani
claudio@cmarianiantiques.com
Tel 415.541.7868 ~ Fax 415.487.3950

scrolling giltwood border standing proud of the frame and crested with stylized shells, all inside a perimeter mirror border and retaining original mercury glass plates

Height: 51"; Width: 31"



Sweden 3428 M00573

**An 18th Century English Black and Gold Chinoiserie
Adjustable Vanity Mirror** with its original mirror plate above



C. MARIANI ANTIQUES
RESTORATION & CUSTOM

1301 Harrison Street San Francisco CA 94103
www.cmarianiantiques.com

Contact: Claudio Mariani
claudio@cmarianiantiques.com
Tel 415.541.7868 ~ Fax 415.487.3950

two sets of serpentine double drawers, two with locks and raised
on incurved "Chinese" bracket feet

Height: 51"; Width: 31"



Sweden 3428 M00573

A Dramatic 18th Century Luccan Polychrome and Parcel-Gilt Pier Mirror retaining its original mercury glass plate

mounted in a fretted neoclassical frame crested with ebonized pine cone finials above a colonnade of palmettes flanked by hanging swags above a centered acanthus and rosette motif flanked by conforming pillar "feet"

Height: 51"; Width: 31"



Sweden 3428 M00573

An 18th Century High Rococo Italian Giltwood Mirror, with two separate plates surrounded by gold scrolling acanthus leaves

in a whimsical asymmetrical pattern

Height: 51"; Width: 31"





C. MARIANI ANTIQUES
RESTORATION & CUSTOM

1301 Harrison Street San Francisco CA 94103
www.cmarianiantiques.com

Contact: Claudio Mariani
claudio@cmarianiantiques.com
Tel 415.541.7868 ~ Fax 415.487.3950

Sweden 3428 M00573

An Octagonal 18th Century Italian Giltwood Mirror, with fine rinceau carving details, the two original mirror plates, and with much of their mercury gilding intact

Height: 51"; Width: 31"



Sweden 3428 M00573

**A French Giltwood Transitional Louis XV to Louis XVI
Mirror** with an elaborate carved cresting comprised of a

mandolin amid rocaille scrolling and foliate motifs

Height: 51"; Width: 31"





C. MARIANI ANTIQUES
RESTORATION & CUSTOM

1301 Harrison Street San Francisco CA 94103
www.cmarianiantiques.com

Contact: Claudio Mariani
claudio@cmarianiantiques.com
Tel 415.541.7868 ~ Fax 415.487.3950

Sweden 3428 M00573

An Oval 19th Century French Gilt Mirror, the wood frame carved with a foliate design surrounding a plate glass and crested with ribband motifs

Height: 51"; Width: 31"



Sweden 3428 M00573

An 18th Century Piedmontese Giltwood Mirror, with extensive fretted rocaille carving crested with an acanthus leaf



C. MARIANI ANTIQUES RESTORATION & CUSTOM

1301 Harrison Street San Francisco CA 94103
www.cmarianiantiques.com

Contact: Claudio Mariani
claudio@cmarianiantiques.com
Tel 415.541.7868 ~ Fax 415.487.3950

cascade and edged in giltwood stringing and nine separate
diminutive mirrors

Height: 51"; Width: 31"



Sweden 3428 M00573

A Luccan Tuscany 18th Century Louis XVI Carved Giltwood Mirror with original plate glass and crested with fretted anadem



1301 Harrison Street San Francisco CA 94103
www.cmarianiantiques.com

Contact: Claudio Mariani
claudio@cmarianiantiques.com
Tel 415.541.7868 ~ Fax 415.487.3950

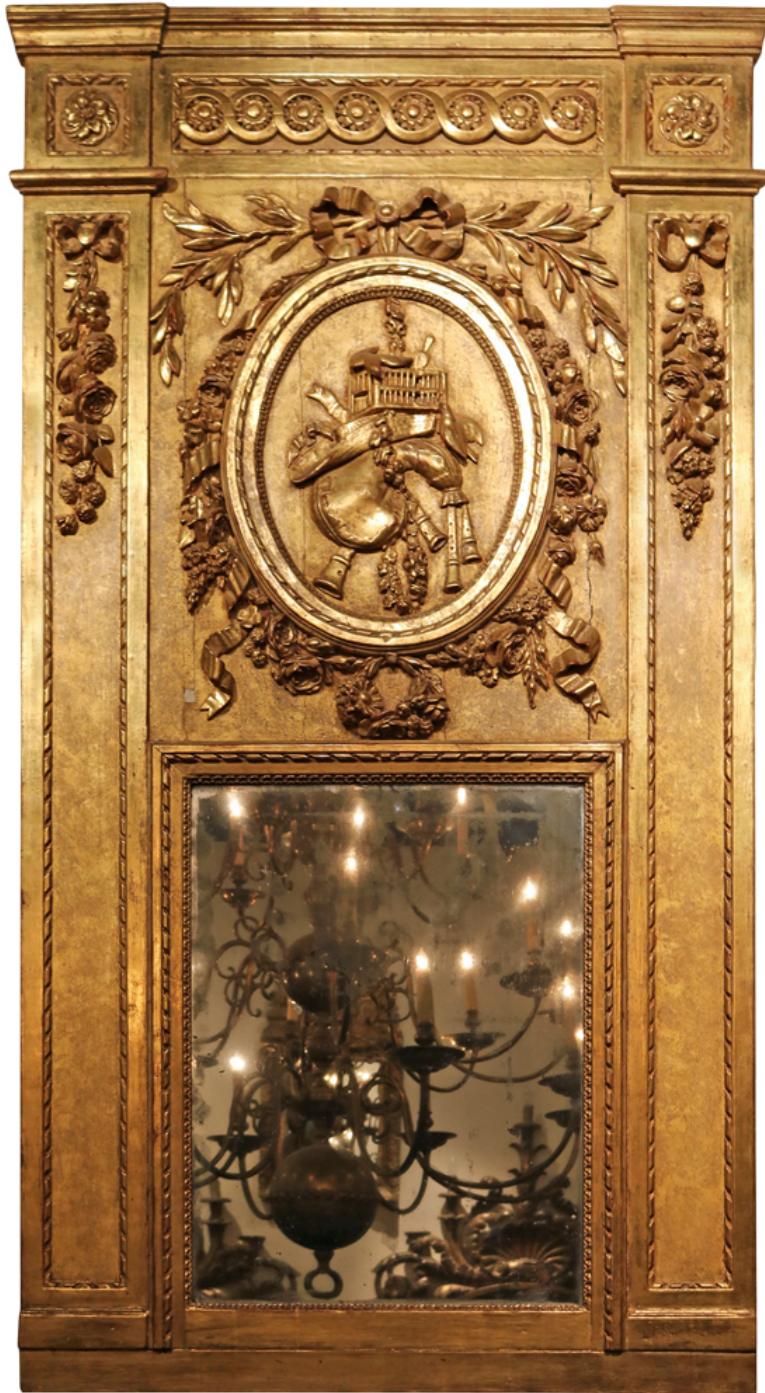
centered by a victory torch and draped with garlands that cascade down the sides and terminating in typically Luccan lions' paw ball and claw "feet" emanating from gilt acanthus foliage

Height: 51"; Width: 31"

 C. MARIANI ANTIQUES
RESTORATION & CUSTOM

1301 Harrison Street San Francisco CA 94103
www.cmarianiantiques.com

Contact: Claudio Mariani
claudio@cmarianiantiques.com
Tel 415.541.7868 ~ Fax 415.487.3950



Sweden 3428 M00573

An Impressive 18th Century Louis XVI Gilt Trumeau Mirror
with pilaster columns detailed with ribband motifs, acanthus
sprays, and flowers surrounding an unusual allegorical cartouche
depicting musical instruments, buildings and articles of clothing

Height: 51"; Width: 31"



Sweden 3428 M00573

**An 18th Century Polychrome and Parcel-Gilt French
Trumeau Mirror** with en camaieu oil on canvas of a pastoral



C. MARIANI ANTIQUES
RESTORATION & CUSTOM

1301 Harrison Street San Francisco CA 94103
www.cmarianiantiques.com

Contact: Claudio Mariani
claudio@cmarianiantiques.com
Tel 415.541.7868 ~ Fax 415.487.3950

scene above a mercury looking glass surrounded by rinceau and foliate designs and accented with fluted banding at the top and bottom

Height: 51"; Width: 31"



C. MARIANI ANTIQUES RESTORATION & CUSTOM

1301 Harrison Street San Francisco CA 94103
www.cmarianiantiques.com

Contact: Claudio Mariani
claudio@cmarianiantiques.com
Tel 415.541.7868 ~ Fax 415.487.3950



Sweden 3428 M00573

A Monumental Italian 18th Century Giltwood Mirror

comprised of nine glasses secured by gilt rosettes and surrounded by exquisite rocaille carvings of scrolling acanthus leaves, stylized shells, and intricate vines, all in a breathtaking asymmetrical rococo motif, the whole raised on outscrolled feet and crested by a tripartite aigrette flanked by volutes affrontees

Height: 51"; Width: 31"



C. MARIANI ANTIQUES RESTORATION & CUSTOM

1301 Harrison Street San Francisco CA 94103
www.cmarianiantiques.com

Contact: Claudio Mariani
claudio@cmarianiantiques.com
Tel 415.541.7868 ~ Fax 415.487.3950



Sweden 3428 M00573

An 18th Century Polychrome and Parcel-Gilt French Trumeau Mirror, the upper portion a pastoral paysage oil on canvas of an idealized shepherdess with one of her sheep above a rectangular looking glass, the whole surrounded by a carved neoclassical giltwood frame

Height: 51"; Width: 31"



Sweden 3428 M00573

A 19th Century Charles X Cheval Mirror with a hidden drawer
and lovely swan neck supports



C. MARIANI ANTIQUES
RESTORATION & CUSTOM

1301 Harrison Street San Francisco CA 94103
www.cmarianiantiques.com

Contact: Claudio Mariani
claudio@cmarianiantiques.com
Tel 415.541.7868 ~ Fax 415.487.3950

Height: 51"; Width: 31"

 C. MARIANI ANTIQUES
RESTORATION & CUSTOM

1301 Harrison Street San Francisco CA 94103
www.cmarianiantiques.com

Contact: Claudio Mariani
claudio@cmarianiantiques.com
Tel 415.541.7868 ~ Fax 415.487.3950





C. MARIANI ANTIQUES
RESTORATION & CUSTOM

1301 Harrison Street San Francisco CA 94103
www.cmarianiantiques.com

Contact: Claudio Mariani
claudio@cmarianiantiques.com
Tel 415.541.7868 ~ Fax 415.487.3950

Sweden 3428 M00573

A Remarkable Early 18th Century Italian Régence Parcel-Gilt and Polychrome Mirror with mercury silvered mirror plates and featuring scrolling acanthus leaves surrounding the frame, ivy vines at top and bottom and accented with faux marble detailing

Height: 51"; Width: 31"

 **C. MARIANI ANTIQUES**
RESTORATION & CUSTOM

1301 Harrison Street San Francisco CA 94103
www.cmarianiantiques.com

Contact: Claudio Mariani
claudio@cmarianiantiques.com
Tel 415.541.7868 ~ Fax 415.487.3950



Sweden 3428 M00573

**An 18th Century Dutch Louis XV Carved Oak Trumeau, with
grisaille on panel of winged putti with aviary and birds above a**



1301 Harrison Street San Francisco CA 94103
www.cmarianiantiques.com

Contact: Claudio Mariani
claudio@cmarianiantiques.com
Tel 415.541.7868 ~ Fax 415.487.3950

shaped and beveled mirror framed with abundant C and S scrolls
amid rocaille and surmounted by a stepped cornice

Height: 51"; Width: 31"